



THE LANTERN



JANUARY 2020 VOLUME 22 ISSUE 1

Superintendent's Report

A couple of things of note have happened in the last couple months – so here it is to bring you up-to-date. In December, we (Division10) took our T-Trak layout to the VA Hospital on Leesburg Road in Lexington on December 7th. **Bruce DeMaeyer**, **Brian Jones**, **Larry Smith MMR®** and I joined **Tom Bensberg** (the sponsor) to set up the layout. Took about 30 minutes to level the tables (that was fun & different!) and then about 15 more to get all the modules up and running. Side comment: the new 'Coffman' adjustment bolts worked great and significantly sped up the module setups. We ran a variety of trains including some military cars loaned to us by Bob Ferguson, who also loaned one of his mini-module dioramas for display (bottom of column 2). **Brian** also made 'Veteran' tags with logos for each service which he placed on the modules built by our veterans. **Stew Winstandley** and **Roger Merritt** joined us later so we had a pretty good representation from Division 10 members. Many of the resident veterans and the staff thanked us for setting up the layout (photo on page 4).

Something else new – all finance data in the future will be in the members only part of the website under the Finance Committee tag and will not be shown at the bottom of page 2 of *The Lantern* any longer. This is at the urging of National and Regional for 501c3 non-profit organizations – such as we all are. All prior *Lanterns* will remain in the archives. We will continue to show names of donors – but not amounts in *The Lantern*. If you have forgotten the user ID and password for access to members only, email the webmaster, **Mark**— nmramcrdiv10@gmail.com. Also our updated division's constitution and by-laws can be linked from under **Resources** at the website address of <https://nmramcrdiv10.yolasite.com/About-Us.php>.

The Board of Directors is thinking of adding an annual fee for hard copies of *The Lantern* due to cost increases for printing (which up to now has been donated by **Mark Hunt** – thanks Mark). Our largest cost is now the postage. Note that emailing a PDF doesn't cost anything for distribution and the pictures are in color. One issue is that some members still don't have email addresses on file, and some members prefer a printed copy.

Speaking of the 'members only' part of the website – most of our Member Profiles are WAY out of date for most of us (that includes me, too). With a couple exceptions the last update was in 2016. Hey – this is a great way to brag about our layouts and provide some background about why we do what we do. And a good place to add a couple pictures of our layouts. It also occurs to me that we've lost several of the members that are still listed. Probably need to clean that up, too. **Tom Bensberg** provided an easy form to enter data while he was our webmaster – need to get that updated, too.

About the only other thing that happened in December was a good operating session at my layout on the 14th. At least the weather cooperated so I could heat up the garage to a reasonable temp for ops. And we broke in **Bruce DeMaeyer** as the Yardmaster. Turns out, that job isn't quite as easy without familiarity of the yard. What a



challenge – but Bruce survived and we made it through almost 3 hours of running!
— *Bob Belt*



Your portal to more fun in model railroading

For the NMRA MC Region officers link to
www.midcentral-region-nmra.org/bod2.html

The Lantern is a monthly (except July) publication of Division 10, Mid Central Region (MCR), National Model Railroad Association (NMRA). All opinions expressed herein are those of the authors, and do not necessarily reflect those of Division 10, the MCR, the NMRA, or anyone else.

In Recognition...

Many thanks to folks listed in the column below. They have given their support for our club. We encourage all NMRA members to help with financial support to *The Lantern* and our website and the Division 10's activities. **Send your monetary contribution to our Treasurer.**

To be listed here your contribution needs to be at least \$20 in cash, or material valued at \$50, or a total of 20 hours time within the last year. Division 10 receives NO monetary support from the NMRA or the MidCentral Region. Div.10 is recognized by the US government as a 501c3 corporation and your cash or material donations may be tax deductible.

Report materials or time to Stew Winstandley. To the right of each contributing member's name is the month of his or her latest contribution. Whenever one makes a contribution of money, material, or time, his or her date will be updated, and for new contributors, their name will be added. Anyone not making a contribution within 12 months will be dropped from this list.

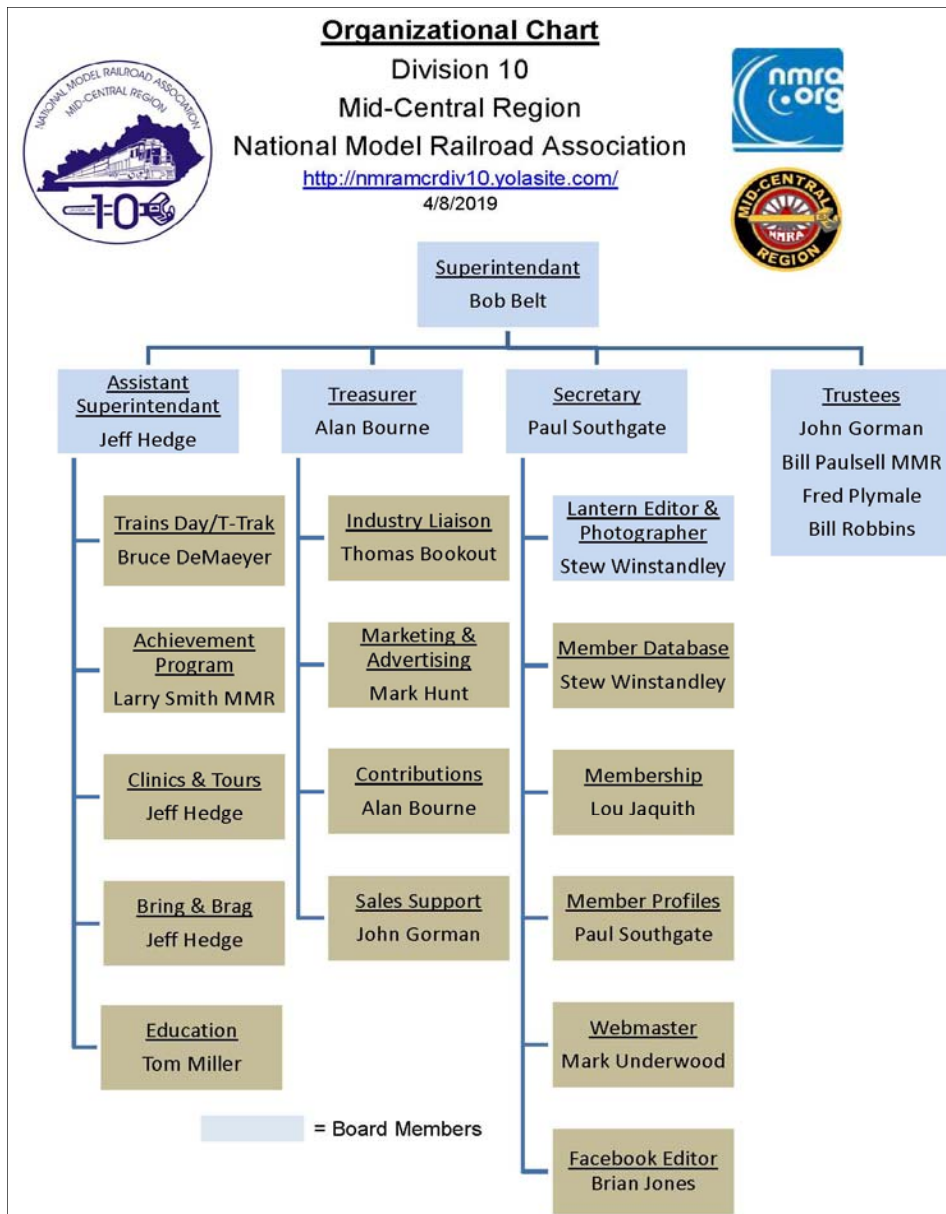
Paul Evans	10/19
Lou Jaquith	"
Tom Krill	"
Chester Myers	6/2019
David Profiitt	2/2019
Bill Marshall	1/2019
John Bowling	12/18

Mark Hunt— paper and copying of printed materials

Fred Plymale—Slide Projector

John Gorman—Contributions to T-Trak

Alan Bourne—Treasurer's materials



Division 10 website addresses are: 1) above at top of Org. Chart, 2) <https://www.facebook.com/NMRA.MCR.Div10/> and 3) <http://ttrak.wikidot.com/nmra-mcr-division-10-the-kentucky-division>

Division 10 Treasurer's Report: Give or send your contribution to Alan Bourne, 438 Queensway Dr., Lexington, KY 40502



The December Bring and Brag was photographs. **Bill Parker** showed us a number of photos of parts of his layout. Bill, great display of your layout. **Lou Jaquith** brought in a Paducah & Louisville locomotive and caboose that was the model used by the Paducah & Louisville Railway for their paint schemes when the railroad was formed with the purchase of the ICG route to Louisville. A photo of Lou's December display models is on page 3. Below his models is a photo of the railroad's original locomotives, above a couple of photos of his layout.



January presentation by Charles Bogart, tour to Lou Jaquith's HO layout

At our January meeting, Charles Bogart will tell us about the history of the Chesapeake, Ohio & Southwestern Railroad. After the meeting we'll go to see Lou Jaquith's HO scale Paducah & Louisville. The PAL is the current day line that in 1882 was the CO&SW. The following is taken from Wikipedia: "The **Chesapeake, Ohio and Southwestern Railroad** was a railway company in Kentucky. It operated from 1882, when it purchased the Paducah and Elizabethtown Railroad and the Memphis, Paducah and Northern Railroad, until 1896, when it was purchased by the Chicago, St. Louis and New Orleans Railroad, that later made up part of the Illinois Central network and its former rights-of-way currently form parts of the Paducah and Louisville Railway. The Paducah & Louisville Railway (PAL) operates freight service on a 270-mile (430 km) line that was purchased from the Illinois Central Gulf, August 1986.

As stated in *Kentucky and the Illinois Central Railroad* by Clifford J. Downey, the CO&SW was owned by Collis P. Huntington. In the late 1860s, Huntington was involved with the Central Pacific Railroad, that one with the Union Pacific, 150+ years ago, built the first railroad to the west coast. Huntington had visions of a transcontinental railroad. The CO&SW was part of his system. He became overextended financial and sold off the CO&SW in 1896.

The CO&SW became part of another railroad that was acquired by and merged into the Illinois Central in 1897. In 1972 the IC and the Gulf, Mobile & Ohio merger was approved to form the Illinois Central Gulf. The ICG shed the line between Paducah and Louisville in 1986 when Jim Smith and David Reed bought it to create the current day Paducah & Louisville Railway. **Lou Jaquith**, in 1986 had his own Paducah & Louisville layout, which will be on tour after our January meeting. Lou contacted the new owners and the railway adopted his logo, his color scheme, and his railroad name, only changing Railroad to Railway. His HO scale is the prototype copied by the PAL. Lou is currently a diector of the Illinois Central Historical Society.

Charles Bogart, is a resident of Frankfort. He is the author of eight books and numerous articles on military, navel, and railroad history. He is the editor of the CSXT Historical Society.

— compiled by Stew Winstandley

THE LANTERN

NEWSLETTER FOR NMRA MCR DIVISION 10

210 BRANNON RD.
NICHOLASVILLE, KY 40356-9711
nmramcrdiv10.yolasite.com



JAN. 5, 1:30

BEAUMONT PUBLIC LIBRARY

BRING AND BRAG

OFF-LINE STRUCTURES

MEETING AGENDA

CHESAPEAKE, OHIO &
SOUTHWESTERN, CHARLES
BOGART (SEE PAGE 3)

TOUR

LOU JAQUITH'S PAL HO



Division 10's T-Trak layout at the Veterans Administration on Leestown Road, December 7th. Left to right, members Bob Belt, Bruce DeMaeyer, Tom Bensberg, Larry Smith and Brian Jones.

AROUND THE BEND

MON.	DAY	HOST	PLACE	EVENT / PROGRAM	TOURS	BRING & BRAG
Jan.	5	Div. 10	Beaumont Branch Library, 3080 Fieldstone Way, 40513	Chesapeake, Ohio & Southwestern—Charles Bogart	Lou Jaquith's HO, 352 Greenbriar Rd, 40503	Off-line Structures
Feb..	2	Div. 10	Tates Creek Library	Operation on a Small Layout—Bill Paulsell MMR		On-line structures
March	1	Div. 10	Beaumont Branch Library	Scratch Building a Modern Mountain Firehouse, Bruce DeMaeyer		Freight Car
March	21	Div. 8	Train Show & Sale, 3938 Poplar Level Rd, Louisville	Train Show	T-Trak Layout	
April	5	Div.10				MCR Contest Entry

Upcoming – the Steel City Express 2020 Regional Convention in Pittsburgh, May 28-31.