



# THE LANTERN



NOVEMBER 2020 VOLUME 22 ISSUE 11

## Superintendent's Report

At the October NMRA MCR Division 10 meeting, I was elected your new superintendent. Bob Belt's limit of two terms had expired. We also have another new face elected to the board, Harold Weinberg is now our treasurer. I would like to thank Alan Bourne for the fine job he did as treasurer. I would also like to thank Bob Belt for his very good leadership as superintendent. Although Bob is no longer superintendent, I still intend to keep him active for the division. I appreciate Bob's willingness to stay involved.

I also appreciate, and need, the willingness of other members in the division to become involved. Things like the newsletter, Facebook, Day at the Library, clinics, E-Day, T-Trak, layout tours, and other projects we are involved in would not happen if members did not put in the time and effort to get it done. I would love to have every member involved some way and at some level in the division. The division belongs to ALL of us and all of us should be involved.

I know that in the present environment of Covid-19, it is hard to be as involved as we would like. I myself would like more personal interaction with other members, but that is not the safest, or wisest, thing to do at the moment. You lose some involvement when you cannot personally interact with other members but that is the present situation. We can still do some things to be involved. One is to meet on Zoom. See the bottom of page 4 for Zoom information. It is not as good as being in the room with the other persons, but it is at

least some contact. You and other members can participate in the Division's meetings.

Another feature of Zoom, is being able to attend a meeting being held a couple of states away. You would not travel that far to go to a two hour meeting, but you can still see and hear what is going on, and interact personally. Zoom allows you to stay at some level of personal contact.

I want to thank Bruce DeMaeyer for his clinic in October on his plans for his future layout. He may be farther away physically, but we still want to hear from him. Bruce will continue organizing and developing T-Trak for our division and for our region, and we appreciate his willingness to do that.

During the division meeting, we also saw a virtual tour of the layout Jeff Hedge is building. Jeff is continuing to work on his layout. I am looking forward to seeing it again in the future and to learn how he will be conducting his operation sessions.

For the foreseeable future, our division meetings will be held on Zoom. Bob Belt has agreed to continue to conduct our Zoom meetings. Please look for an email before the meeting for the link to join on a Sunday. I do not expect us to be able to meet in person at the library until around the middle of next year. But nobody knows for sure. Please keep yourself and your family safe.

I also want to mention that if you have any clinic topics you would like to see, or even present, please contact me or Jeff. We want to present what you're interested in, so tell us.

— Larry Smith



For the NMRA MC Region officers link to [www.midcentral-region-nmra.org/bod2.html](http://www.midcentral-region-nmra.org/bod2.html)

*The Lantern* is a monthly (except July) publication of Division 10, Mid Central Region (MCR), National Model Railroad Association (NMRA). All opinions expressed herein are those of the authors, and do not necessarily reflect those of Division 10, the MCR, the NMRA, or anyone else.

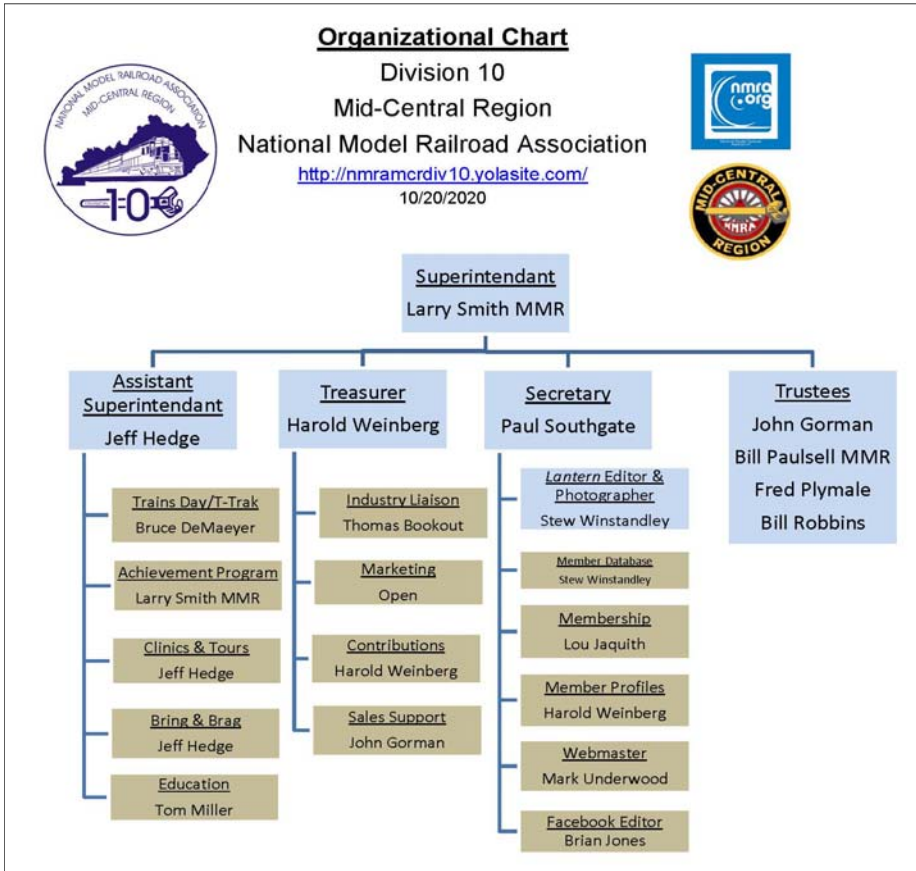
## In Recognition...

Many thanks to folks listed in the column below. They have given their support for our club. We encourage all NMRA members to help with financial support to *The Lantern* and our website and the Division 10's activities. **Send your monetary contribution to our Treasurer.**

To be listed here your contribution needs to be at least \$20 in cash, or material valued at \$50, or a total of 20 hours time within the last year. Division 10 receives NO monetary support from the NMRA or the MidCentral Region. Div.10 is recognized by the US government as a 501c3 corporation and your cash or material donations may be tax deductible.

Report materials or time to Stew Winstandley. To the right of each contributing member's name is the month of his or her latest contribution. Whenever one makes a contribution of money, material, or time, his or her date will be updated, and for new contributors, their name will be added. Anyone making a contribution will be listed below for 12 months.

John Wilshire	10/20
Bill Parker	1/2020
Harold Weinberg	11/19
John Bowling	12/19
Paul Evans	10/19
Lou Jaquith	"
Tom Krill	"
Fred Plymale—Slide Projector	
John Gorman—Contributions to T-Trak	



Below: photo of our Superintendent, Larry Smith, on the platform of Georgia Railroad 300 at the 2010 Kentucky Derby.



Division 10 website addresses are: 1) above at top of Organization Chart,

2) <https://www.facebook.com/NMRA.MCR.Div10/> and

3) <http://ttrak.wikidot.com/nmra-mcr-division-10-the-kentucky-division>

**Division 10 Treasurer:** Give or send your contribution to Harold Weinberg, 8 Landsdown Estates, Lexington, KY 40502-3322.

## From the Editor by Stew Winstandley

USSC #148 (Formerly FEC #148) is an ALCo 4-6-2 Pacific type steam locomotive, built in 1920. The engine was sold to the United States Sugar Corporation in 1952 for use on their lines hauling harvested sugar cane trains. In 2016, the USSC re-purchased the locomotive and began an extensive 4 year restoration, completing just in time for the engine's 100th birthday in April 2020. In September 2020, the USSC announced that #148 would haul the first revenue sugarcane train of the season. My interest in a model of #148 is discussed and pictured on page 3 of the June 2020 issue of *The Lantern*.

The NMRA's *Turntable* is a monthly publication, emailed to members, which, like a railroad turntable, will lead you in several directions on the internet. The latest e-publication (Volume 4 Number 10 October 2020) is a collection of railroad and model railroad videos. One of the links to videos in this edition, of about 15 minutes, is of USSC #148.

[https://www.youtube.com/watch?v=FMcWdpbX\\_nY&feature=youtu.be](https://www.youtube.com/watch?v=FMcWdpbX_nY&feature=youtu.be)

## New Directions in NMRA Education

By Tom Miller, Education Director, MCR and Division 10

Educational planning for our MCR and NMRA has gained considerable attention during the pandemic. The Education Department of NMRA has generated three new documents focused on NMRA educational efforts at the regional and division levels.

The first document is a Short Range Action Plan **LRP 2019-001** which has the goal of making the NMRA “the **international leader** in education and fellowship concerning scale model railroading.” The objective of this goal is that each NMRA region will establish and maintain an Education Committee. This Education Committee for each region will establish education programs with the guidance of the NMRA Education Department Manager.

The national NMRA Education Department along with Regional Presidents and Regional Education Committees will revise NMRA organizational documentation by December 2020. **Each NMRA region is to establish a Regional Education Committee by March 2021.**

The second document is a Long Range Action Plan **LRP 2019-002** which is under the direction of **NMRA EduTRAIN Committee Chair** at the national level. It has as its goal that NMRA will standardize educational activities with the objective that each region will submit not fewer **than two clinics** each year for inclusion in the EduTRAIN Program from its divisional membership.

It is the responsibility of the **NMRA EduTRAIN Committee Chair** to establish and publish the appropriate **criteria** for preparation and submission of **EduTRAIN clinics**. The Regional Education Committee Chairs will **solicit, review, and transmit** to national no fewer than **two** properly prepared and acceptable clinics each year. The Regional Education Committee shall be responsible for initial review of clinics proposed to national to ensure compliance with basic preparation requirements.

Once approved and submitted from the regional level, the **NMRA EduTRAIN Committee Chair** will complete the review and approval process for each submitted clinic and publish those clinics on the web page. The **NMRA EduTRAIN Committee Chair** shall record and advise the author of an EduTRAIN Clinic of the special **Achievement Program Author Certificate** credit received for their work.

**The third document is the Long Range Action Plan LRP 2019-003** which pertains to **Modeling with the Masters** (MWTM) and the MWTM as the **Lead Instructor**. The **Modeling with the Masters Lead Instructor** will coordinate with Region Education Committee Chairs **soliciting candidates** for **MWTM Instructors**. The NMRA MWTM Lead Instructor shall complete the certification of at least **two MMRs as MWTM Instructors in each Region**. When a Region has two certified MWTM Instructors, the Region shall schedule and conduct at least one MWTM Clinic in the Region each year. The **Region Education Committee Chair** shall be responsible to identify future candidates for certification to maintain at least two certified MWTM instructors in the Region. The **Modeling with the Masters Instructor certification** should be published by **December 2020** and the **Modeling with the Masters Instructors certified by June 2021**.

# THE LANTERN

NEWSLETTER FOR NMRA MCR DIVISION 10

210 BRANNON RD.  
 NICHOLASVILLE, KY 40356-9711  
 nmramcrdiv10.yolasite.com



## Clinics:

In Larry's *Superintendent Report* on page 1, he mentioned that a member with a clinic topic of interest, needs to let him know. Division 10's website at <https://nmramcrdiv10.yolasite.com/Modeling.php> has links to most of our Division's past clinics. Take a look if you haven't been there lately.

Larry is thinking about a clinic on operations. MCR Division 8, Louisville area, posts some of their clinics on YouTube. If you would like to view a tour of Rob Cooper's layout, link to <https://www.youtube.com/watch?v=jxgEXy0Pecl>. The first 20 minutes is a clinic, and Rob's tour follows that, so you can skip forward 20 minutes to tour his layout in Elizabethtown. The layout is of the 1950's L&N between Cincinnati and Knoxville, with staging yards in both cities, Rob uses Railpro during operating sessions. Railpro uses a radio link between the handheld and the locomotive in place of the normal network DCC. He has a dispatcher station with phone contacts to locations on the layout. He runs mainline through trains and a number of turns at various points on the layout.

Division 10 has members that have had operating sessions. The percentage of our members taking part in a session is unknown. If you're interested in operations on model railroads, try an online google search. An introductory video, for example, is at <https://www.youtube.com/watch?v=xul5PM0Adlo>.

**NOV. 1, 1:30**

ONLINE ZOOM MEETING

**BRING AND BRAG**

DIESEL LOCOMOTIVE, EMAIL  
 PHOTOS TO BOB BELT'S GMAIL

**MEETING AGENDA**

DCC INSTALLATION WITH  
 SOUND, JOHN GORMAN

**TOUR**

NONE

## AROUND THE BEND

MON.	DAY	HOST	PLACE	EVENT / PROGRAM	TOURS	BRING & BRAG
Nov.	1	Div. 10	Zoom online	DCC Installation with Sound, John Gorman		Diesel/electric Locomotive
Dec.	6	Div. 10	Zoom online			Caboose/Cabin Car
Jan.	3	Div. 10	Zoom online			Trains stuff I got for Christmas
Feb.	7	Div. 10	Zoom online			Photos
Mar.	7	Div. 10	Zoom online			

<https://zoom.us/download> - The web browser client for Zoom meetings will download automatically when you start or join your first Zoom meeting. Whether you are doing a Zoom for the first time or have done it before, use the link (web address) that will be emailed to you the middle of the last week of October.