



# THE LANTERN



JANUARY 2021 VOLUME 23 ISSUE 1

## From the Superintendent

I certainly enjoyed our December meeting clinic by Bob Frankrone entitled “How to Add a Scene to your layout in 15 Easy Steps”. Bob did an excellent job and from the many comments I heard, many of you also enjoyed the clinic. We sent Bob a thank you note and a monetary appreciation of the job he did (see top of page 4). Even before that, he offered to come back in June to present “Beginning Operations” and I accepted his offer.

In his presentation, Bob changed a scene on his layout as a series of steps. There are a number of different but related steps to complete the whole project. As I was listening, I noticed what he does to help in accomplishing various tasks. I also noticed what skills and knowledge he uses to get things completed. For example, he had to ballast the track. After selecting a brand of ballast, one has to fix the ballast to the track and the layout. I noticed he used alcohol as a wetting agent (to reduce surface tension), while I use a little detergent with water. Then, which was good, he explained why he did not use what I used. I have tried alcohol but do not like the smell. I noticed he used white glue and water to seal the ballast down but he did not use the same ratio of glue to water that I use, and then he explained why he used that ratio. It was interesting to hear what other people do to accomplish the same thing to complete the job. There are a lot of different methods to achieve the same result. It is also good for some members to hear, who may have never ballasted track, but need to learn how to do it.

How he made signs for his buildings was another learning point. I frequently use PowerPoint and a printer, but my method of making signs is similar to Bob’s but not quite the same. Real buildings have signs and our buildings should also. Seeing how others do it is a good way to learn. Overall, Bob covered the steps which need to be done and also some of the methods for the completion of those steps.

It may be that not everyone knows how to accomplish certain methods or skills that are needed to build a

completed layout. I do not know everything involved in building a layout. Hopefully in the coming months we can present some of the basic methods and techniques needed. I think there is a need for that.

The next clinic on January 3 will be on operations. Four members of our division will discuss how they do operations on their layout. Each will give you the basics of their operating system and discuss the pros and cons of their chosen method. They will also discuss how they organize the activities associated with operations to make the process flow easier.

The following clinic, which is February 7, Perry Lamb will present “Weathering without an airbrush”. Perry is very knowledgeable on the subject. For the Piedmont division in the Atlanta area, Perry organizes, and is a presenter, for the beginning model railroading courses that the Piedmont division hosts for its members. He has done a clinic entitled, “Military Flat Car Loads” for NMRAX and runs military trains on his modern theme layout, the “Utah, Colorado & Western”. Perry has also been an instructor for Modeling with the Masters.

I now know of a video editor in Windows 10. Sounds like a great tool to use for making a video presentation, like one you could do to show your layout during a meeting or on YouTube (see Kolumn on page 3). We may have a clinic or separate clinic on it for members who are interested. If you are interested in seeing such a clinic, please contact me.

The Monthly Modeling subject is what you got for Christmas, even if you had to buy it yourself. Bring those presents out! Tis the season and I hope all of you and your family are having a great Christmas! I also hope all of us have a good New Year. The next year should be better than this one. Stay safe and Zoom on January 3rd.

—Larry Smith

Link to a Perry Lamb layout video: <https://www.youtube.com/watch?v=vFGZzUoy8qI>

## In Recognition...

Many thanks to folks listed in the column below. They have given their support for our club. We encourage all NMRA members to help with financial support to *The Lantern* and our website and the Division 10's activities. **Send your monetary contribution to our Treasurer.**

To be listed here your contribution needs to be at least \$20 in cash, or material valued at \$50, or a total of 20 hours time within the last year. Division 10 receives NO monetary support from the NMRA or the MidCentral Region. Div.10 is recognized by the US government as a 501c3 corporation and your cash or material donations may be tax deductible.

Report materials or time to Stew Winstandley. To the right of each contributing member's name is the month of his or her latest contribution. Whenever one makes a contribution of money, material, or time, his or her date will be updated, and for new contributors, their name will be added. Anyone making a contribution will be listed below for 12 months.

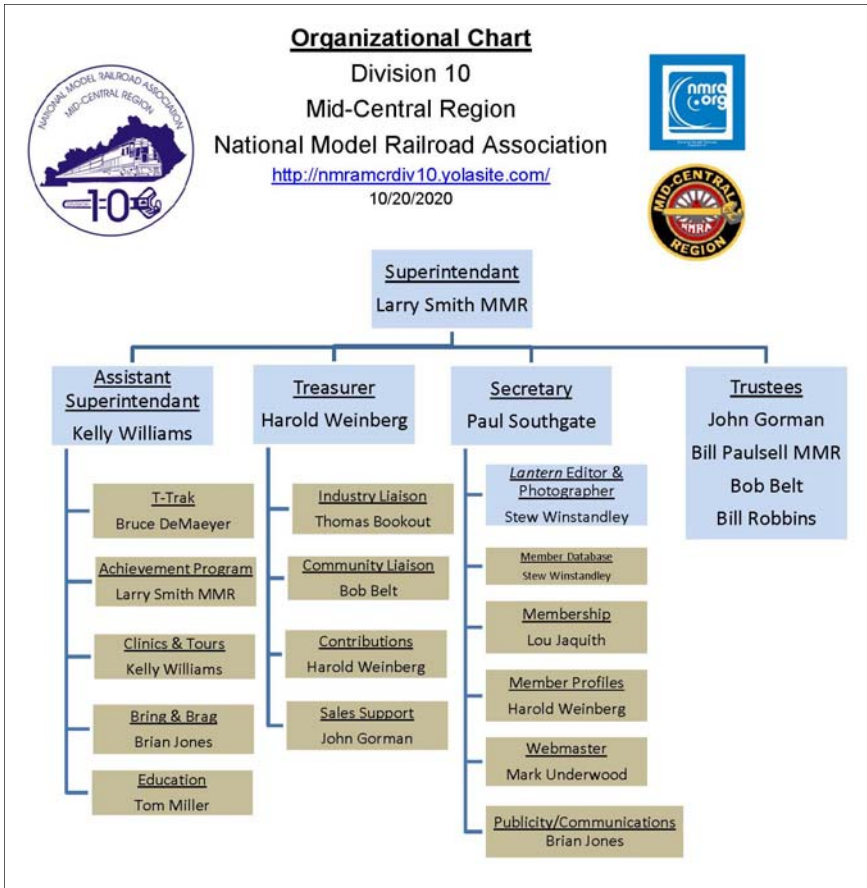
John Wilshire	10/20
Bill Parker	1/2020
John Bowling	12/19
Fred Plymale—Slide Projector	
John Gorman—Contributions to T-Trak	
Harold Weinberg—Treasurer's Materials	

..



For the NMRA MC Region officers link to [www.midcentral-region-nmra.org/bod2.html](http://www.midcentral-region-nmra.org/bod2.html)

*The Lantern* is a monthly (except July) publication of Division 10, Mid Central Region (MCR), National Model Railroad Association (NMRA). All opinions expressed herein are those of the authors, and do not necessarily reflect those of Division 10, the MCR, the NMRA, or anyone else.



### Division 10's advertising policy:

A. COMMERCIAL AD RATES 1. Newsletter • \$10/month for business card • \$15/month for 1/8 page or less • \$25/month for ¼ page • \$45/month for ½ page • \$80/month for full page • Multiple separate ads can be aggregated together for the above price structure. 2. Web site: No commercial ads allowed.

B. MEMBER AD RATES 1. Newsletter: Member rates will be at 20% of the commercial rates. Members that have a commercial business will pay the commercial rate. 2. PAYMENT Payment is by cash or check to the treasurer in advance. No credit/debit cards..

**Website** addresses are: 1) above at top of Organization Chart, 2) <https://www.facebook.com/NMRA.MCR.Div10/> and 3) <http://ttrak.wikidot.com/nmra-mcr-division-10-the-kentucky-division>

**Division 10 Treasurer:** Give or send your contribution to Harold Weinberg, 8 Lansdown Estates, Lexington, KY 40502-3322.

The November issue of *The Lantern* had a photo of Larry Smith on the Georgia 300. This car, that belongs to Jack Heard, was used on the South Central Florida Express (US Sugar Corp) December



12th to haul Santa Claus to the cities around Clewiston Fla. Here's a photo of Santa on the Georgia 300. Happy Holidays!

## Landscaping for the Model Railroad

**Doug Sandmeyer**

**Division 12, MCR, NMRA**

During this past year I have been experimenting with various commercially available products for railroad ballast, fill, and landscaping materials. A number of readily obtainable products were identified as possible candidates. They are all natural rock and may be found at the big box stores for very reasonable prices. These products may not be ready for use but require grading.



Depending on your intended use any number of devices may be used for a sieve, from an old door screen in a frame, a kitchen sifter (not your wife's) or a dedicated sieve set having differing mesh sizes.

The first photo is of the ordinary kitchen tool, the second is a set of three soil sieves purchased from Amazon. The grid sizes are: fine .065", medium .100", and course .250". These are the sizes used in the example photos. It's important to note when looking at the photos that the .065 screen will pass up to .065" and anything smaller, so if you're working in small scales you may want to source a smaller screen for your ballast. For reference the area shown in the photos of stone is roughly 10" wide. There are a lot of small fines in these products. Other products could be screened if needed.



I had read or heard somewhere, that Tube Sand was a good scenic material and with sifting for size I found it could be used in a number of places. Photo #3 shows tube sand. This product comes in a sausage shaped tube that is frequently used this time of year to add weight over the rear axles of pickup trucks. I purchased mine at the Home Depot store. From left to right in the photo: as purchased unsifted, Course .250 and larger, Medium .065"-.100", and Fine .065" and smaller. Tube sand resembles creek and stream gravel.

Paver sand is usually crushed granite and used for drainage when setting tile in walkways. I found mine at the Home Depot in two colors, with similar shades of gray. I found that this product had the most variation in size of any and you will see the extra category resembling boulders. Because of the size variation it didn't look like it would be good for its intended use as pathway stone. This crushed granite is irregular in shape.

Paver #9, shown in Photo 5 was purchased from a commercial stone shop in a large bag. This paver material is uniform in size so when sifting the result was concentrated more than the others and thus might be more useful in larger scales. The color is a medium gray. It has an irregular shape, but with a much more uniform size.

It may be possible to color these materials by mixing them with powdered chalks or pigments. I did not try this, except to mix some with sanded grout. While sanded grout did not work for this it does work as a scenic material for ground cover, and comes in a wide variety of colors.



## Kelly's Kolumn

Thanks to so many of you who have welcomed me, Kelly Williams, with open arms since assuming this role last month. John Gorman and others volunteered me for Assistant Superintendent days after I joined the club. I am thrilled for the opportunity to give back through service to the club. So many of you who have helped my dad and me get our railroad to its current form – graciously opening your homes for us to visit your layouts and answering our questions.

My first project is working with leadership to get our club on Youtube, with the goal of having many layout tours available in video form on the internet for others to view. I hope you will consider shooting a short video of your layout, or a series of short videos that we can string together to display your talents. An iPhone/iPad, Android, or tablet device with a camera is all you need to get started. Long term my goal is to have a video archive of all of our member's layouts on youtube - no matter how big, small, new or old. I want to share the talents of our greatest asset, the club's members, to other hobbyists everywhere. Please let me know if you are willing to be one of the first to shoot a video to get us started down this road. If you have questions or wish to volunteer email me at [kwilliams@pga.com](mailto:kwilliams@pga.com). Example video - <https://www.youtube.com/watch?v=yGKOVEq6P5g>

# THE LANTERN

NEWSLETTER FOR NMRA MCR DIVISION 10

210 BRANNON RD.  
NICHOLASVILLE, KY 40356-9711  
nmramcrdiv10.yolasite.com

**JAN. 3, 1:30**

ONLINE ZOOM MEETING

## MONTHLY MODELING

TRAINS STUFF I GOT FOR  
CHRISTMAS, EMAIL PHOTOS TO  
BOB BELT'S GMAIL

## MEETING AGENDA

PANEL DISCUSSION ABOUT  
OPERATIONS

**TOUR**

NONE

Larry Smith received the following message from Bob Frankrone after Bob received a token of Division 10's appreciation for his December meeting's clinic presentation:

"Please pass along my sincere thanks to the members for the unexpected token of their appreciation. I enjoyed presenting my clinic to Division 10. I am really glad everyone enjoyed it.

A special note of thanks to Harold Weinberg. He wrote a very complimentary letter that really meant a lot to me. I sometimes don't know how my presentations are received by the attendees, but Harold made it very clear to me in his letter. To quote him; "Our members' reaction was overwhelmingly positive and enthusiastic...". I don't think I have ever received such nice feedback and I am truly most grateful."

If you did not attend the December meeting, here's a link to Bob's presentation: <https://www.youtube.com/watch?v=kCydDGSKy-M>



Here's a link to a tour of Mark Dance's Columbia and Western layout. If you haven't seen a transfer table on a layout, Mark shows his starting at about the 32:35 minute in the video. <https://www.youtube.com/watch?v=FTThfzVM5Sc>

## AROUND THE BEND

MON.	DAY	HOST	PLACE	EVENT / PROGRAM	TOURS	MONTHLY MODELING
Jan.	3	Div. 10	Zoom online	How to do Operations, Panel	None	Trains stuff I got for Christmas
Feb.	7	Div. 10	Zoom online	Weathering without an air brush, Perry Lamb		Landscaped 1/2 square foot diorama with a scale figure
March	7	Div. 10	Zoom online	Running JMRI on a Raspberry Pi, Mark Underwood		Box Car or Stock Car
April	11	Div. 10	Zoom online, 2nd Sunday	Wiring Your Layout for DC or DCC, John Gorman		T-Trak module or a 1 square foot diorama
May	2	Div. 10	Zoom online			

<https://zoom.us/download> - The web browser client for Zoom meetings will download automatically when you start or join your first Zoom meeting. Whether you are doing a Zoom for the first time or have done it before, use the link (web address) that will be emailed to you the middle of the last week of December.