



THE LANTERN



AUGUST 2021 VOLUME 23 ISSUE 8

From the Superintendent

We escaped! We got loose and got out, and we enjoyed it! I am overstating it a bit but I think we all were glad to get out of the house and gather with friends and hear about the developments in the Kentucky Steam Corporation. Just nice to see other members after not seeing anyone because of covid and good to be around a railroad. We all enjoyed it and you missed a good experience if you were not in attendance. As members we do not often have a chance to visit something railroad related, so this was a good chance to visit. Our host for the visit to the KY Steam Corporation was Joe Nugent and he did an excellent job of showing us all around and answering all our questions. We got a tour of everything! We also got to meet “That Steam Guy” (his tag on Facebook) and I was impressed listening to him talking about steam engines. He heads up his own business and he is helping to restore steam engine 2716. Joe also told us about the plans for the Ravenna area which the KY Steam Corporation is developing. The music venue should be started being built soon since it has financing and a ribbon cutting planned. I am looking forward to going back sometime, maybe next year, and see the progress which has been made. If we do, maybe you will decide to join us.

Speaking of getting out, I also went to a swap meet recently in the Cincinnati area hosted by division 7 of MCR. This was the first show I had gone to in what seemed like ages. It was billed as a swap meet, and not a full blown train show, but I knew model trains would be there and that was good enough for me.

When we got to the show, I saw a number of guys leaving with many bags of merchandise. When we got inside a lot of goodies were left but the place was filled with buyers and merchandise was moving fast. I did not buy anything but it did give me my “train show fix”. If you are looking for train shows, division 7 will host their two day train show on October 9 and 10 at the Lakota West High School. Division 8 in Louisville will have their train show on Saturday, November 13, at the Holy Family Parish Saffin Center on Poplar Level Road. If you want one sooner, Saturday August 7, there will be a train show in New Haven and also one in Berea. Please check the internet sites for times, admission, and directions.

I hope you all are keeping yourselves safe and have gotten your shots. Bob Belt will be checking with the Lexington Library System to see if they will soon be allowing groups to meet in the library. If so, we can possibly have our first combined Zoom/inperson (hybrid) meeting soon, perhaps in September. It appears

a number of other divisions in MCR will soon be having, or have had, their first hybrid meeting.

I should mention that we have been invited to go to Grosser's on Sunday, August 1st from 1 to 4 PM to visit their O scale layout and their 7 ½ inch railroad you can ride on. I heard a rumor that Ray is looking to sell the outdoor layout so it may be the *last time* to be able to ride on his trains. It is always a fun time. I plan to bring sodas. Be safe and I hope to see you all in person soon.

— Larry Smith (larry.ksmith@yahoo.com)

With our trip to the Grosser's, August 1st, a few photos from 2009 through 2018 of Division 10's Grosser's visits are included below and on page 3. Photos are from Stew Winstandley's files.



Pete Birdsong, Ray Grosser, and Larry Smith (2009)



Joe Holbrook with his switch engine (2012)

Continued on page 3

In Recognition...

Many thanks to folks listed in the column below. They have given their support for our club. We encourage all NMRA members to help with financial support to *The Lantern* and our website and the Division 10's activities. **Send your monetary contribution to our Treasurer.**

To be listed here your contribution needs to be at least \$20 in cash, or material valued at \$50, or a total of 20 hours time within the last year. Division 10 receives NO monetary support from the NMRA or the MidCentral Region. Div.10 is recognized by the US government as a 501c3 corporation and your cash or material donations may be tax deductible.

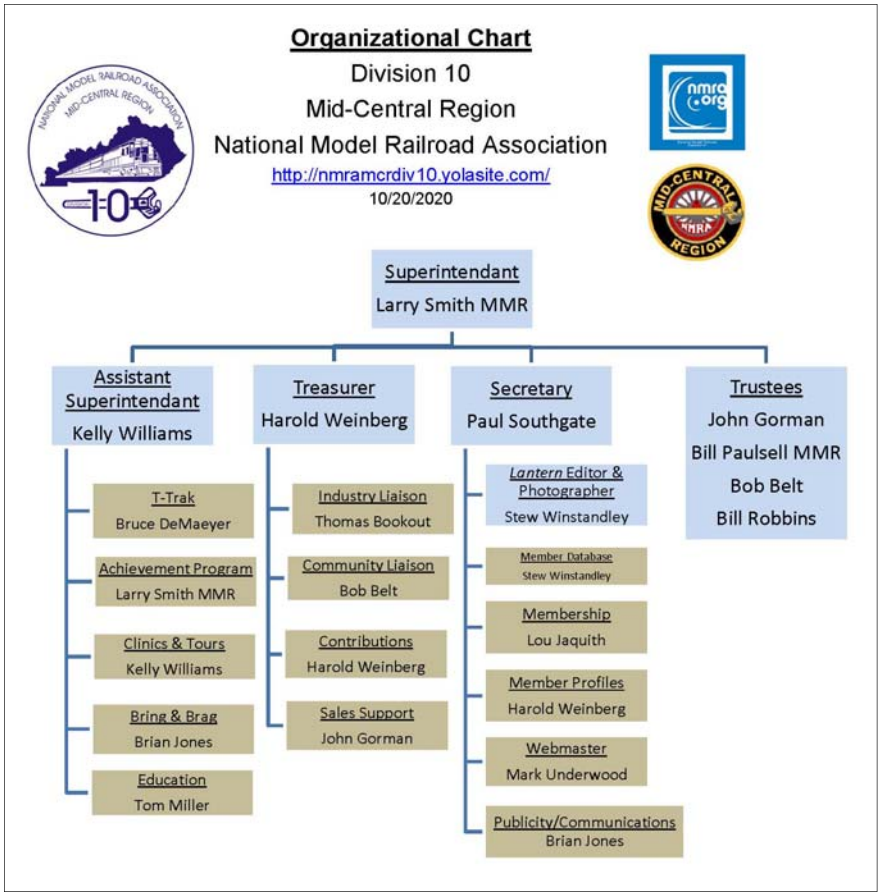
Report materials or time to Stew Winstandley. To the right of each contributing member's name is the month of his or her latest contribution. Whenever one makes a contribution of money, material, or time, his or her date will be updated, and for new contributors, their name will be added. Anyone making a contribution will be listed below for 12 months.

- | | |
|---------------------------------------|--------|
| John Wilshire | 4/2021 |
| Lou Jaquith | 1/2021 |
| Rich Murphy | 1/2021 |
| Chester Myers | 3/2021 |
| Fred Plymale—Slide Projector | |
| John Gorman—Contributions to T-Trak | |
| Harold Weinberg—Treasurer's Materials | |



For the NMRA MC Region officers link to www.midcentral-region-nmra.org/bod2.html

The Lantern is a monthly (except July) publication of Division 10, Mid Central Region (MCR), National Model Railroad Association (NMRA). All opinions expressed herein are those of the authors, and do not necessarily reflect those of Division 10, the MCR, the NMRA, or anyone else.



Division 10's advertising policy:

A. COMMERCIAL AD RATES 1. Newsletter • \$10/month for business card • \$15/month for 1/8 page or less • \$25/month for ¼ page • \$45/month for ½ page • \$80/month for full page • Multiple separate ads can be aggregated together for the above price structure. 2. Web site: No commercial ads allowed.

B. MEMBER AD RATES 1. Newsletter: Member rates will be at 20% of the commercial rates. Members that have a commercial business will pay the commercial rate. 2. PAYMENT Payment is by cash or check to the treasurer in advance. No credit/debit cards..

- Website addresses are: 1) above at top of Organization Chart,
2) <https://www.facebook.com/NMRA.MCR.Div10/> and
3) <http://ttrak.wikidot.com/nmra-mcr-division-10-the-kentucky-division>

Division 10 Treasurer: Give or send your contribution to Harold Weinberg, 8 Lansdown Estates, Lexington, KY 40502-3322.

Renee and Ray Groseer MMR are having an open house on August 1st, beginning at 1 pm. They have a layout and a ride-on railroad. The Grosser's home is at 1145 Linn Road, Eubank, KY, which is about 8.5 miles east of the intersection of US 27 and KY 70, south off of KY 70 onto Charles Elgen Rd., right on Cank McWilliams Rd., left on Todd Rd. to Linn. 1145 is at the end of Linn. This is a private event and not sponsored by the NMRA.



Top right, Don Burris. Second row left, Randy Coffman. Second row right, Ray Grosser. Third row right, Bill Paulsell.



THE LANTERN
NEWSLETTER FOR NMRA MCR DIVISION 10

210 BRANNON RD.
NICHOLASVILLE, KY 40356-9711
nmramcrdiv10.yolasite.com



TRAIN SHOW & SALE
OUR 31ST YEAR



SATURDAY, NOVEMBER 13, 2021 10:00 AM to 3:00 PM
Holy Family Parish Saffin Center
3938 POPLAR LEVEL RD, LOUISVILLE, KY 40213

- Model Trains in All Scales
- Operating Layouts and Displays
- Retail Sales
- Information Stations
- Hourly Door Prizes!
- Great Food & Beverages
- FREE Parking

ADMISSION

\$6.00 Per Person – Children 12 and under free with an adult

Dealer Tables available - \$30 per table
For information or to reserve dealer tables contact:
Mark Hedge - (812) 288-8037 Email: div8trainshow@gmail.com

Sponsored by Division 8 - Mid Central Region - NMRA

FOR MORE INFORMATION VISIT

Website: <http://div8-mcr-nmra.org>
Facebook: @Division8.MCR.NMRA

AUGUST 1, 1:00

TRIP INVITATION

MONTHLY MODELING

NONE

MEETING AGENDA

VISIT TO THE GROSSER'S,
1145 LINN ROAD, EAST OF
EUBANK, KY.

TOUR

O SCALE AND 1:8 SCALE
OPERATING LAYOUTS

AROUND THE BEND

MON.	DAY	HOST	PLACE	EVENT / PROGRAM	TOURS	MONTHLY MODELING
Aug.	1	Grosser's	1145 Linn Road, east of Eubank, KY 42567	Invitation for vaccinated families to visit the Grosser's layouts, 1 to 4.	Additional information on page 2	
Sept.	5	Div. 10	?	Wiring your layout for DC or DCC, John Gorman		Non-revenue equipment
Oct.	3	Div. 10	Maybe in-person and Zoom combined	Finishing Models, Sam Swanson		Completed T-Trak Module OR Square foot diorama
Nov.	7	Div. 10		Railroads Around Lexington, Charles Bogart		
Dec.	5	Div. 10		Card Stock Structures, Tony Gutteridge		

<https://zoom.us/download> - The web browser client for Zoom meetings will download automatically when you start or join your first Zoom meeting. Whether you are doing a Zoom for the first time or have done it before, use the link (web address) that will be emailed to you. No Zoom available from the Grosser's.