



THE LANTERN



JANUARY 2022 VOLUME 24 ISSUE 1

From the Superintendent

I hoped you all enjoyed Christmas and it was a time you could see your family in person and enjoy being together. Since I am getting older, I think that is the part I enjoy most of all about the Christmas season. *The Lantern* should reach you around the New Year, and I hope you enjoy your New Year Day also. As I have mentioned before, I hope the coming year is good for all of us and we can get out more and participate in more activities, including model railroading. I know the virus is still around and not likely to disappear soon, and we need to watch ourselves, but I do wish we can be involved in model railroading activities. It is always nice to get together and exchange ideas and conversation. As a group, we should visit new places and revisit old ones.

For current future activities, I know T-Trak is committed to the Div. 8 train show March 19 in Louisville. T-Trak may also go to the VA Hospital in Louisville but that is just in a planning stage. Hopefully we can see about having a Trains Day at the library this coming year, perhaps in Lexington.

Don't forget about IndyJunction which is May 18-22 and will constitute our regional convention for MCR although we will be joined by two other regions and the Proto-type modelers. IndyJunction should be a very good convention and I hope you have signed up for it. It is easy to do on the website www.indyjunction2022.org.

Our next NMRA Div. 10 meeting will be January 8 at 1:30 PM available **only** by Zoom. We changed the date from January 1 for obvious reasons. Our

presenter will be our own **Mark Underwood** who will present "Running JMRI on a Raspberry Pi". JMRI stands for Java Model Railroad Interface. As you are probably aware, JMRI will do a number of different services which are most beneficial to model railroaders. Some of which are Decoder Pro, to easily program your engines, Operations Pro, to help with operations, signaling, and other good things which, by the way, are all free. The Monthly Modeling entry for January is a Cardstock Model. Tony Gutteridge in December gave a very good presentation on cardboard models. So if you have made one, please let us see it by bringing it to the meeting or emailing a photo of it to **Bob Belt**.

For future meetings, we will have the CatPaz team presenting in February on 3D printing. They will discuss their 3D printing methods and show you what is available from the work they have produced. I have a model of their abominable snowman on our T-Trak module. In March, Bob Frankrone, one of our favorite presenters, will present "Promontory – Past and Present". A mix of trains and history. Be sure to check the Monthly Modeling topics on page 4 so you can prepare and show off your modeling skills in future months. Be prepared to discuss how it is done so we all can learn.

We are always looking for articles to put in the newsletter that will pass information on to other members. Please consider submitting something, either small or large in length. Take care and see you on Zoom, January 8th (link emailed on Thursday).

— Larry Smith



For the NMRA MC Region officers link to
www.midcentral-region-nmra.org/bod2.html

The Lantern is a monthly (except July) publication of Division 10, Mid Central Region (MCR), National Model Railroad Association (NMRA). All opinions expressed herein are those of the authors, and do not necessarily reflect those of Division 10, the MCR, the NMRA, or anyone else.

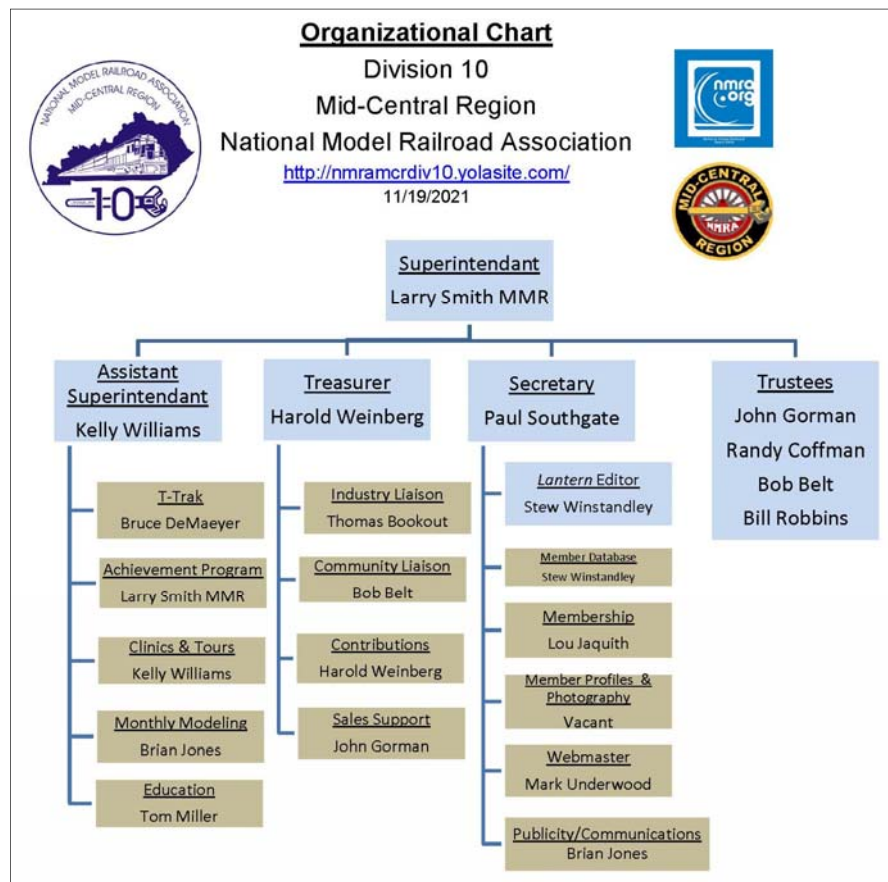
In Recognition...

Many thanks to folks listed in the column below. They have given their support for our club. We encourage all NMRA members to help with financial support to *The Lantern* and our website and the Division 10's activities. **Send your monetary contribution to our Treasurer.**

To be listed here your contribution needs to be at least \$20 in cash, or material valued at \$50, or a total of 20 hours time within the last year. Division 10 receives NO monetary support from the NMRA or the MidCentral Region. Div.10 is recognized by the US government as a 501c3 corporation and your cash or material donations may be tax deductible.

Report materials or time to Stew Winstandley. To the right of each contributing member's name is the month of his or her latest contribution. Whenever one makes a contribution of money, material, or time, his or her date will be updated, and for new contributors, their name will be added. Anyone making a contribution will be listed below for 12 months.

Donald Wilson	12/21
John Wilshire	4/2021
Lou Jaquith	1/2021
Rich Murphy	1/2021
Chester Myers	3/2021
Fred Plymale—Slide Projector	
John Gorman—Contributions to T-Trak	
Harold Weinberg—Treasurer's Materials	



Division 10's advertising policy:

A. COMMERCIAL AD RATES 1. Newsletter • \$10/month for business card • \$15/month for 1/8 page or less • \$25/month for 1/4 page • \$45/month for 1/2 page • \$80/month for full page • Multiple separate ads can be aggregated together for the above price structure. 2. Web site: No commercial ads allowed.

B. MEMBER AD RATES 1. Newsletter: Member rates will be at 20% of the commercial rates. Members that have a commercial business will pay the commercial rate. 2. PAYMENT Payment is by cash or check to the treasurer in advance. No credit/debit cards..

Website addresses are: 1) above at top of Organization Chart,

2) <https://www.facebook.com/NMRA.MCR.Div10/> and

3) <http://ttrak.wikidot.com/nmra-mcr-division-10-the-kentucky-division>

Division 10 Treasurer: Give or send your contribution to Harold Weinberg, 8 Lansdown Estates, Lexington, KY 40502-3322.

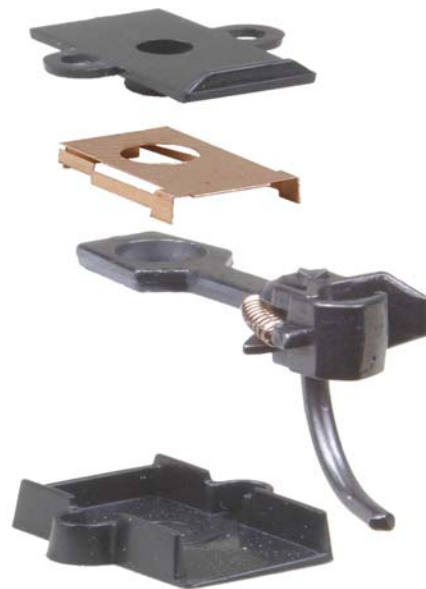
Update from Stew Winstandley: In this space, in the December issue emailed to members, but corrected in the website online edition, showing photos of a hydrogen fuel cell Cnaadian Pacific prtotype and my model locomotive, the prototype was incorrectly stated as a GE 8-40CM. It is a GMD SD40-2F. The paint job on the N scale model was done by me. Both the 8-40CM and the SD40-2F are cowl freight locomotives. A cowl unit is one with full-width enclosing bodywork. The 8-40CMs were purchased by Canadian National, and the SD40-2Fs by Canadian Pacific. The SD40-2F was only available in HO scale, whereas the 8-40CM is in N scale. Since I'm an N scale modeler, I used that model for the CP H2 OEL paint scheme. Both units have very similar characteristics. Once I see an actual prototype photo, I'll make model adjustments. (photos on page 4)

Couplers

Cecil Hestand is working on his HO scale layout and he posed a question to some of Division 10 members about couplers. Here is part of his email: “Five of my Locomotives and 17 of the rolling stock have the old horn hook coupler. I also have 1 locomotive and 12 rolling stock that have the European type loop and hook couplers. Should I convert to the Kadee #5 couplers?”

Larry Smith MMR replied: “Yes, I would use Kadees. #5 is good to start with and should work for most, if not all, cars. Remember Kadee also has couplers with longer shafts if needed (like maybe tight curves), also other #s have over and under knuckles if the need to match coupler height. It would be most beneficial to have a Kadee coupler height gauge (#206) to make sure the height of the two couplers match so that the cars will more likely stay coupled together. Also you may need some fiber washers (#208 .015", or #209 .010") to raise or adjust the coupler height to match the desired height of the coupler gauge. More stuff to buy but worth it to make sure the coupler heights do match for better operation. You may not need the coupler boxes with the couplers but in certain situations you may need a box to mount the coupler. Not often, but it happens. Most #5 couplers will drop right in the existing box on a car, but some arrangements are different. Not sure about the European couplers and how they are mounted. Also save any extra small springs that come with the couplers. Occasionally they will drop off the coupler and get lost, and you will have to put another one on. I glue one end of the spring to where it should go on coupler and then use an exacto knife to wrestle the other end of the spring on the other part of the coupler where it belongs.”

John Gorman and **Randy Coffman** agreed with Larry's comments, with Randy saying he'd help with the installation. This is an example of members helping members, one of the reasons to belong to Division 10. Our division's members have many modeling skills and are always willing to answer questions and help.



THE LANTERN

NEWSLETTER FOR NMRA MCR DIVISION 10

210 BRANNON RD.
NICHOLASVILLE, KY 40356-9711
nmramcrdiv10.yolasite.com



The top photo below is of a Rapido Dash 8-40CM, and the bottom photo is of a Bowser HO scale SD40-2F. Referring to the update at the bottom of page 2, these photos give you a comparison of these two cowl bodied freight units.



JANUARY 8, 1:30

MEETING VIA ZOOM

MONTHLY MODELING

CARDSTOCK MODEL

MEETING AGENDA

RUNNING JMRI ON A RASBERRY
PI, MARK UNDERWOOD

TOUR

NONE

AROUND THE BEND

MON.	DAY	HOST	PLACE	EVENT / PROGRAM	TOURS	MONTHLY MODELING
Jan.	8 (2nd Sat.)	Div. 10	Only by Zoom	Running JMRI on a Raspberry PI, Mark Underwood	None	Cardstock Model
Feb.	5 (Sat.)	Div. 10	Tates Creek Branch Library, 3628 Walden Dr, Lexington or Zoom	3D Printing, The CatPaz Team	None	Lighting on your layout
March	5 (Sat.)	Div. 10		Promontory - Past and Present, Bob Frankrone	None	Details, Details, Details
April	2 (Sat.)	Div. 10		If I can obtain a Merit Award, so can you, Harold Weinberg	None	Historical 100+ year old Locos, Rolling Stock
May	7	Div. 10		Two and a half D CAD using PowerPoint, Dave Ackmann	None	Your Merit Award Worthy Work

<https://zoom.us/download> - The web browser client for Zoom meetings will download automatically when you start or join your first Zoom meeting. Whether you are doing a Zoom for the first time or have done it before, use the link (web address) that will be emailed to you in the first week of January.