



THE LANTERN



NOVEMBER 2022 VOLUME 24 ISSUE 11

From the Superintendent

The cooler weather and the color in the trees tell me that Fall has arrived. It is time to weatherize the lawn mower and plan for more indoor activities, perhaps including working on the layout and other model railroading activities. Time to participate in other events involving model railroading and even those not related to model railroading but fun. A lot of activities occur this time of the year since the weather is usually good.

Next Meeting Our next NMRA meeting is November 5, a Saturday, at the usual time of 1:30 PM. It will be hybrid, meaning both Zoom and in-person. Bob or Stew will send out the Zoom link close to the meeting time. We will meet in-person at Tates Creek Library in the bigger conference room. I hope to see all of you at the meeting. The clinic topic will be "Service to the Hobby: AP Volunteer, Author, etc". This is part of our continuing push for awareness of the Achievement Program this coming year. Service to the Hobby category includes Official, Volunteer and Author and we will focus on the last two. Our roundtable discussion group will provide information on the requirements and how best to achieve them. I plan to have some of the members who have these awards say a few words about them. The Monthly Modeling topic for September is "Painted Figures you did". Last month we had Sam Swanson showing you how he painted his figures for his layout. Now we want to see the painted figures you have done. Painted figures, aka people, add a lot to a layout making it seem more human. So, take some photos and send them by email to Bob Belt or contact him if you wish to share and show them yourself. I plan to have some photos. I recently painted some, that were unpainted, since they are cheaper and easy to paint, well pretty much.

T-Trak I went to Cincinnati earlier this month to help with the T-trak layout at the Train show. A couple other T-trak groups in the area joined us with their layouts. We all had a good time at the show. If you would like to join us, please contact Bruce DeMaeyer or any other T-trak person

to find out more about building a T-trak module. One thing I saw at the layout area in the show was a camera on an engine that showed the layout at the track view and displayed it on a monitor or other electronic device. It was fun to see the kid's faces as they bent down to see themselves on the monitor.

Open houses I had an open house for viewing my layout last Sunday. A total of only 3 people showed up but we all had a good time. Everyone worked on a turnout problem I had and we found the answer. I was disappointed more members did not attend, but glad for those who came. Thanks. We have more layout visits planned and I hope we will have a bigger turnout for them. It is time we get out and visit with each other in person. Our next layout open house is at Bill Parker's at 146 Penmoken Park in Lexington. It will be October 30, Sunday, from 3 to 5:30 PM. Bill has a large O scale layout with a LOT of details in the garage behind the house. A good layout to visit. All children will receive a peppermint stick. In November, Jeff Hedge has agreed to have a layout tour at his house at 203 Rhodes Lane in Georgetown from 1 to 4 PM on Sunday, November 20. Jeff has an HO scale layout featuring the steel making industries along with other industries associated with it. It was looking good a few years ago (pre covid) and I am sure Jeff has been working on making it even better since then. Do not miss a chance to see a good layout. More details later in the Lantern or in an email.

Questionnaire I am planning on sending out a questionnaire in the near future to our members on their model railroading activities. I will try to make it as easy as I can for you to respond so I can obtain information on the members and what we can do as an organization in the future. Remember, there are no wrong answers. Please FILL OUT the questionnaire and return it to me by email, in person, or regular mail if you prefer. I am interested no matter your level of interest and involvement in model

Continued on page 3



Your portal to more fun in model railroading

For the NMRA MC Region officers link to www.midcentral-region-nmra.org/bod2.html

The Lantern is a monthly (except July) publication of Division 10, Mid Central Region (MCR), National Model Railroad Association (NMRA). All opinions expressed herein are those of the authors, and do not necessarily reflect those of Division 10, the MCR, the NMRA, or anyone else.

In Recognition...

Many thanks to folks listed in the column below. They have given their support for our club. We encourage all NMRA members to help with financial support to *The Lantern* and our website and the Division 10's activities. **Send your monetary contribution to our Treasurer.**

To be listed here your contribution needs to be at least \$20 in cash, or material valued at \$50, or a total of 20 hours time within the last year. Division 10 receives NO monetary support from the NMRA or the MidCentral Region. Div.10 is recognized by the US government as a 501c3 corporation and your cash or material donations may be tax deductible.

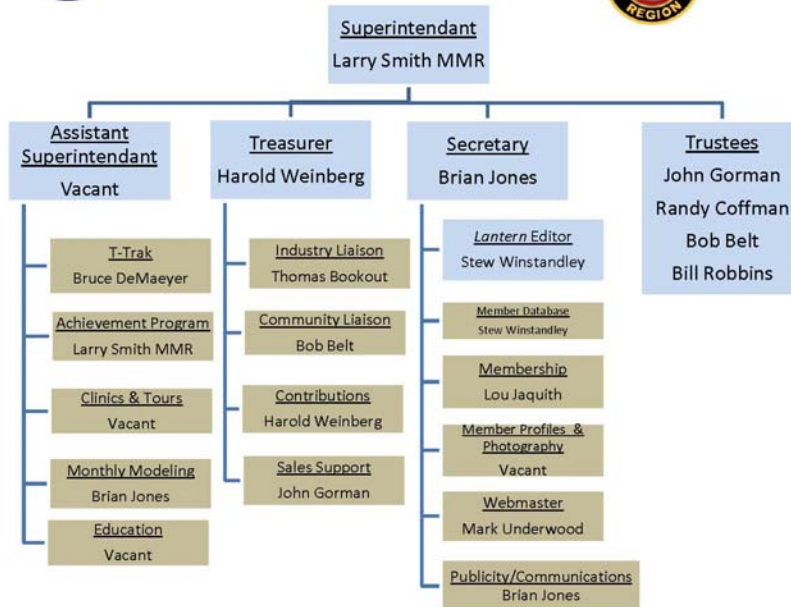
Report materials or time to Stew Winstandley. To the right of each contributing member's name is the month of his or her latest contribution. Whenever one makes a contribution of money, material, or time, his or her date will be updated, and for new contributors, their name will be added. Anyone making a contribution will be listed below for 12 months.

John Wilshire	6/2022
Clay Faulconer	4/2022
Larry Smith	4/2022
Randy Coffman	1/2022
Harold Weinberg	1/2022
Donald Wilson	12/21

Organizational Chart



Division 10
Mid-Central Region
National Model Railroad Association
<http://nmramcrdiv10.yolasite.com/>
10/10/2022



Division 10's advertising policy:

- COMMERCIAL AD RATES 1. Newsletter • \$10/month for business card • \$15/month for 1/8 page or less • \$25/month for 1/4 page • \$45/month for 1/2 page • \$80/month for full page • Multiple separate ads can be aggregated together for the above price structure.
- Web site: No commercial ads allowed.

- Website addresses are: 1) above at top of Organization Chart, 2) <https://www.facebook.com/NMRA.MCR.Div10/> and 3) <http://ttrak.wikidot.com/nmra-mcr-division-10-the-kentucky-division> 4) YouTube.com search: Division 10 Mid Central Region NMRA, Past Div. 10 clinics are available on YouTube.

Division 10 Treasurer: Give or send your contribution to Harold Weinberg, 8 Lansdown Estates, Lexington, KY 40502-3322.



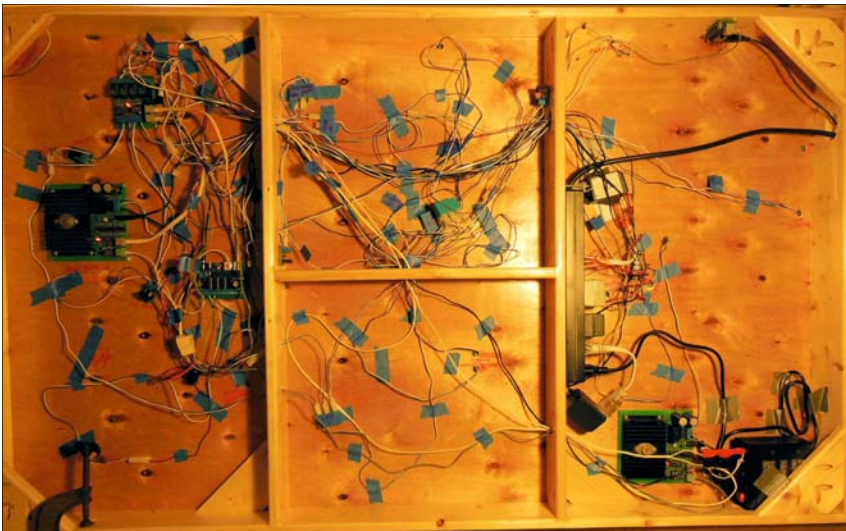
railroading. All responses will be kept as confidential as possible. It does not matter to me where you are in the hobby but we want to provide you what you need for assistance and to improve the division overall. Thank you.

You all take care of yourselves and enjoy the weather before it turns too cold.

— Larry Smith



Check out the January clinic. We'll learn how to model the depot. Whitefish station is a stop on Amtrak's Empire Builder in Whitefish, Montana.



Our December clinic includes a discussion about layout control panels. The photo to the left is of the wiring that controlled the 3' by 5' cityscape layout that was on display during the MCR May 2015 convention. The layout was run by a PC software program. Attend the December meeting and learn more about panels and layout wiring.

THE LANTERN

NEWSLETTER FOR NMRA MCR DIVISION 10

210 BRANNON RD.
NICHOLASVILLE, KY 40356-9711
nmramcrdiv10.yolasite.com



An updated organization chart is on page 2.

Below: Mark Underwood, left, received a Certificate of Achievement during the October meeting from Larry Smith.



Nov. 5, 1:30

ZOOM & IN-PERSON, TC LIB.,
3628 WALDEN DR., 40517

MONTHLY MODELING

YOUR PAINTED FIGURES

MEETING AGENDA

AP DISCUSSION

TOURS

JEFF HEDGE, 203 RHODES LN,
GEORGETOWN, NOV. 20, 1-4

AROUND THE BEND

MON.	DAY	HOST	PLACE	EVENT / PROGRAM	TOURS	MONTHLY MODELING
Nov.	5	Div. 10	Tates Creek Library and on Zoom	Hobby Service, AP Volunteer & Author, Discussion	Nov. 20, Jeff Hedge, 203 Rhodes Lane, Georgetown	Your Painted Figures
Nov.	12	Div. 8	Holy Family Parish Center	Train Show & Sale, 10-3	3938 Poplar Level Rd., 40213	
Dec.	3	Div. 10		Layout Facia and Control Panels, Rich Murphy	None	Structures
Jan.	7	Div. 10		Whitefish Depot, Bruce DeMaeyer		Scenery
Feb.	4	Div. 10		Beginning Operations, Eric Smith		

<https://zoom.us/download> - The web browser client for Zoom meetings will download automatically when you start or join your first Zoom meeting. Whether you are doing a Zoom for the first time or have done it before, use the link (web address) that will be emailed to you in the first week of November for the meeting.