



THE LANTERN



DECEMBER 2022 VOLUME 24 ISSUE 12

From the Superintendent

Autumn is here and Winter is fast approaching. We have had various fall activities which usually slows down due to the winter weather. **Bob Belt, Cecil Hestand, Bruce DeMaeyer** and I attended the train show in Louisville, sponsored by Division 8 with the T-Trak layout. We had a couple guys join us from Indianapolis with their T-Trak modules. They were real nice guys with well detailed modules. Bruce is involving a lot of persons and groups in T-Trak and having them meet together to display the T-Trak modules. Bruce does a great job and if you wish to have some fun with us please choose the T-trak group. You may wish to put March 18, 2023 on you calendar, since that is the date of the next Division 8 Train show in Louisville.

A great activity which was held last Sunday, November 20 was the layout tour at **Jeff Hedge's** in Georgetown. Jeff and his son were great hosts and we had a great turnout. Lots of members showed up and there seemed to be a lot of conversation. I was pleased. I was also glad to see at least a couple new guys who came who were new to model railroading and want to build a layout. I think they got a lot of advice, I hope in the future that our members can somehow help them out with advice and knowledge so they have a successful entry into the hobby. I know there are members who have different levels of skills and knowledge in our division, which is great, and I hope we can do something to help out new modelers and our members. Bob mentioned having mini clinics on various topics and that sounds like a good idea. In the future, do not be surprised to have someone ask you to assist in doing a mini clinic.

We recently had a successful official election of officers. At the recent board meeting, the board voted to put Election by Acclamation in the bylaws, and then we used it to vote in the elected officers. We used Election by Acclamation since we only had one person running for each elected position.

I am happy to announce that we now have an Assistant Superintendent for the division, **Cecil Hestand**. Congratulations to Cecil and we are glad to have him with

us. Cecil joins the officers as Assistant Superintendent. I know Cecil remarked one time that one thing he would like is more information and advice provided to members who have just started a layout.

We are now looking for a Secretary for the division. The main duties are to take minutes of the board meetings (regular meetings are recorded and put on YouTube) and keeping track of the membership. If interested in the position, please contact me and we can talk about it and I can give you a list of duties.

At the next Division 10 meeting, **Rich Murphy** will give us a clinic presentation on "Facia and Control Panels on Layouts". This is a continuing series from Rich showing how he is building a new layout in Somerset. He knows what he is doing and provides good information. The meeting will be hybrid, and I am looking forward to seeing you either on Zoom or in person. It will be held at the Tates Creek branch library on Saturday, December 3, from 1:30 to 3:30 PM. If the library ever allows meetings on Sunday, I will seriously consider moving meetings back to Sunday. It depends on library staffing levels. Rich has said that he might be able to have a layout tour in December, depending on how much work he gets done. Watch for any future announcements. If not December, I am sure we will have a tour in the future. A good layout to visit.

On January 7, a Saturday, Bruce DeMaeyer, who is climbing up the MMR ladder, will give a clinic on building the Whitefish Depot in Montana. This is in the area that is featured on his layout, which is the Rockies. I have seen pictures (one in last month's *Lantern*) of the building and it is very decorative, with a number of items on the surface, and not a snap to build. Bruce said he was considering using cardstock with a layering technique. This is a very interesting technique and a very effective use of the material. Please plan to tune in to see the clinic.

Take care and enjoy the upcoming holidays.

— Larry Smith



For the NMRA MC Region officers link to www.midcentral-region-nmra.org/bod2.html

The Lantern is a monthly (except July) publication of Division 10, Mid Central Region (MCR), National Model Railroad Association (NMRA). All opinions expressed herein are those of the authors, and do not necessarily reflect those of Division 10, the MCR, the NMRA, or anyone else.

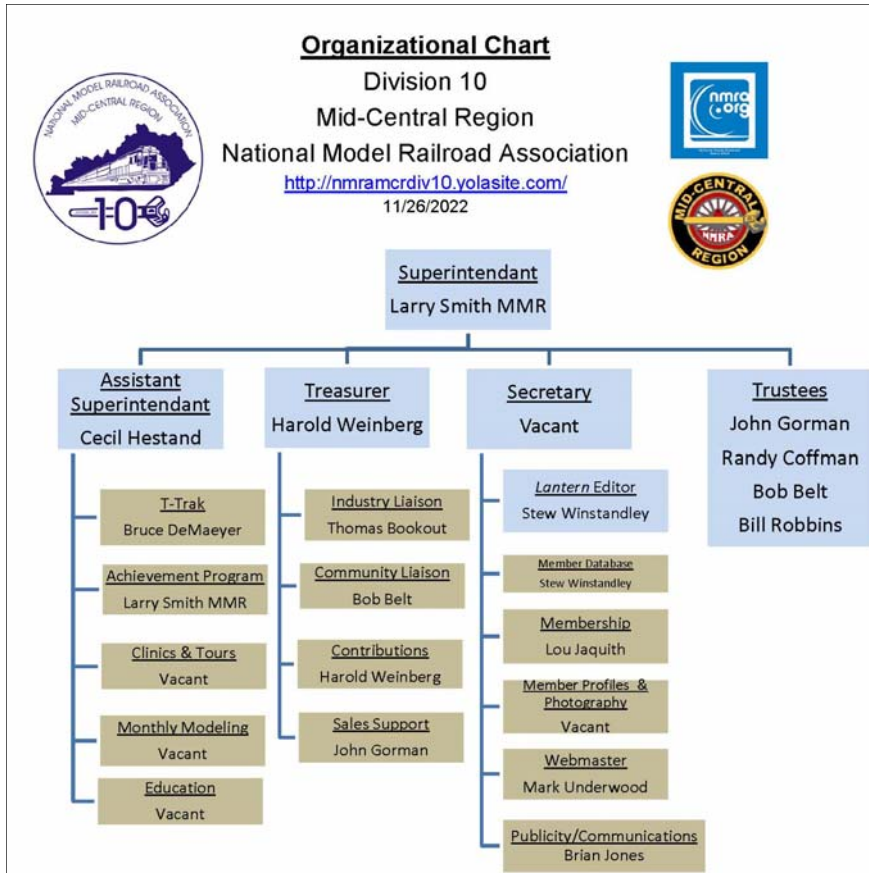
In Recognition...

Many thanks to folks listed in the column below. They have given their support for our club. We encourage all NMRA members to help with financial support to *The Lantern* and our website and the Division 10's activities. **Send your monetary contribution to our Treasurer.**

To be listed here your contribution needs to be at least \$20 in cash, or material valued at \$50, or a total of 20 hours time within the last year. Division 10 receives NO monetary support from the NMRA or the MidCentral Region. Div.10 is recognized by the US government as a 501c3 corporation and your cash or material donations may be tax deductible.

Report materials or time to Stew Winstandley. To the right of each contributing member's name is the month of his or her latest contribution. Whenever one makes a contribution of money, material, or time, his or her date will be updated, and for new contributors, their name will be added. Anyone making a contribution will be listed below for 12 months.

John Wilshire	6/2022
Clay Faulconer	4/2022
Larry Smith	4/2022
Randy Coffman	1/2022
Harold Weinberg	1/2022
Donald Wilson	12/21



Below: The tour in November was to Jeff Hedge's HO layout. Left to right: Cameron, Kelly, & Jim Williams; and Jeff .

Division 10's advertising policy:

1. COMMERCIAL AD RATES 1. Newsletter • \$10/month for business card • \$15/month for 1/8 page or less • \$25/month for 1/4 page • \$45/month for 1/2 page • \$80/month for full page • Multiple separate ads can be aggregated together for the above price structure.
2. Web site: No commercial ads allowed.

- Website** addresses are: 1) above at top of Organization Chart,
2) <https://www.facebook.com/NMRA.MCR.Div10/> and
3) <http://ttrak.wikidot.com/nmra-mcr-division-10-the-kentucky-division>
4) YouTube.com search: Division 10 Mid Central Region NMRA, Past Div. 10 clinics are available on YouTube.

Division 10 Treasurer: Give or send your contribution to Harold Weinberg, 8 Lansdown Estates, Lexington, KY 40502-3322.



Rich Murphy will present information about facias and control panels during our December meeting. To the right is a photo of Rich's layout during construction, showing his fascia and his to-be-installed control panel (on the left front of the layout). This will be another clinic you won't want to miss.



**RAILS TO PITTSBURGH
2023 Mid Central NMRA
Regional Convention!
May 4-7, 2023**

EVERYTHING YOU WANT IN A GREAT CONVENTION, AND MORE!
Clinics – Tours – Contests – Non-Rail Activities – Layout Tours
Banquet – White Elephant Tables – Door Prizes – Railfanning

Our convention hotel, the Doubletree by Hilton at Cranberry is conveniently located within easy access to the Pennsylvania Turnpike and Interstate-79 just north of Pittsburgh. You can visit the city, see Station Square, ride the Duquesne or Monongahela Inclines, railfan and enjoy the area. You are just 15 minutes from Norfolk Southern Mainline and 20 minutes from CSX Mainline.

Here are some of the POTENTIAL activities available at the RAILS TO PITTSBURGH Convention!

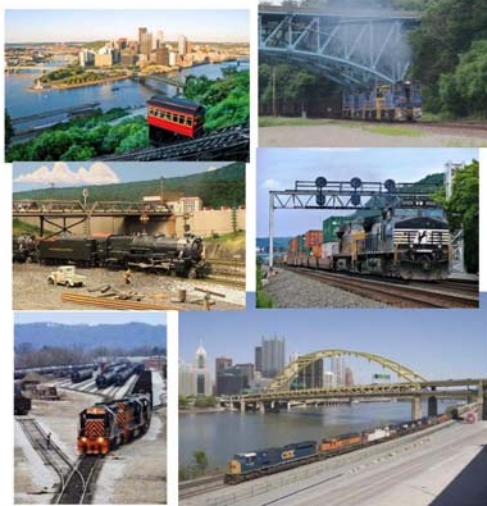
A Variety of Rail Tours
Steel Industry History
The Bridges of Pittsburgh
Port Authority Light Rail Shops
The Pennsylvania Trolley Museum
Allegheny Valley Railroad and Yard

Excellent Clinics
Western Pennsylvania Railroads
Steel and Other Industries
Operations: Real and Simulated
Modern Railroad Practices
Modeling Structures, Rolling Stock and Scenery

Non-Rail Tours and Clinics
Pittsburgh Glass Factory Tour,
Card making, Jewelry,

Local Attractions
Carnegie Science Center – National Aviary
Heinz History Center – Duquesne Incline
Pittsburgh Zoo & PPG Aquarium
Phipps Conservatory – The Andy Warhol Museum

Railfanning
NS & CSX Mainline Action
W & LE & Union Railroad
Variety of Local Short lines



For more information, check our website frequently for updates: www.keystonedivision.org

Our superintendent recently emailed to members a questionnaire, to get information that will help in the future planning of Division 10. It was an attached Word document. I may be the only person without Microsoft Word on their PC, but if you are unable to open the document, please reply to Larry and he may be able to create a PDF that you can read.



Above is my attempt to model CP 1001, their H20EL (hydrogen zero emissions locomotive), in N scale. Canadian Pacific has recently released a video of this locomotive in operation. The video is at <https://youtu.be/QxrAqjEwEZk> There are US domestic zero emission locomotives in development, all are battery powered, sort of like, for example, a Tesla automobile.

— Stew Winstandley

THE LANTERN

NEWSLETTER FOR NMRA MCR DIVISION 10

210 BRANNON RD.
NICHOLASVILLE, KY 40356-9711
nmramcrdiv10.yolasite.com



The organization chart on page 2 has been updated.

Below: Harold Weinberg, right, received his AP award from Larry Smith during the November meeting.



DEC. 3, 1:30

ZOOM & IN-PERSON, TC LIB.,
3628 WALDEN DR., 40517

MONTHLY MODELING

STRUCTURES

MEETING AGENDA

LAYOUT FACIA & CONTROL
PANELS, RICH MURPHY

TOURS

AT PUBLICATION TIME, NONE

AROUND THE BEND

MON.	DAY	HOST	PLACE	EVENT / PROGRAM	TOURS	AP Discussions
Dec.	3	Div. 10	Tates Creek Library and on Zoom	Layout Facia and Control Panels, Rich Murphy	There may be a December announcement	Structures AP
Jan.	7	Div. 10		Whitefish Depot, Bruce DeMaeyer	None	Scenery AP
Feb.	4	Div. 10		Beginning Operations, Eric Smith	None	Civil AP
March	4	Div. 10		A.P. Certificate in Prototype Modeling, Pete Birdsong	Bob Ferguson, March 19, 1-4	Scratch Built Cars or Structures
April	1	Div. 10		CV Variables and How to Use Them, John Gorman	Bob Frankrone	Electrical AP

<https://zoom.us/download> - The web browser client for Zoom meetings will download automatically when you start or join your first Zoom meeting. Whether you are doing a Zoom for the first time or have done it before, use the link (web address) that will be emailed to you December 1st for the meeting.