



THE LANTERN



JANUARY 2023 VOLUME 25 ISSUE 1

From the Superintendent

I had an enjoyable Christmas and I hope you did also. Planning the Christmas dinner we knew our daughter was coming but not sure who else. The day before we found out we would have ten persons altogether. It turned out fine as everyone seemed to enjoy the day. I guess Christmas time is also about sharing. I hope everyone made it through the Siberian cold express without serious problems.

The next meeting will be held Saturday, January 7, 2023 at 1:30 PM in the large conference room at the Tates Creek library. The meeting will be hybrid, both in person and on Zoom. Bob Belt will send out the Zoom invite closer to the date. I hope all of you attend, either in person or on Zoom. The clinic presentation will be by our own Bruce DeMaeyer who will discuss building a structure from scratch he is currently working on, the Whitefish Depot. The actual depot is located in Montana and is an imposing structure, especially to model. The depot is on the Rocky Mountain railroad line that Bruce is modeling on his layout. Find a picture of the depot on the internet as you may wish to take a look at it to see the challenge that Bruce is facing. There was a photo of the depot a couple of months ago in the newsletter. We will learn how Bruce plans to build the structure. I know he mentioned using a form of cardstock and layering the material to create a 3-D effect. I have not used the material myself but I remember reading an article about the process and it was a most effective method for giving depth and for looking real.

During our February meeting Eric Smith will present a clinic entitled Beginning Operations. This presentation was recommended by one of our members. Eric Smith is head of the OpSig special interest group and hosts a monthly Zoom broadcast on various aspects of doing operations. Some of you are familiar with operations, and that it can be a fun model railroading activity. Whether you are doing operations now, or planning to do so in the future, this will be a good clinic to hear. In March, our old friend Pete Birdsong will be "here with us" to present a clinic.

For the next meeting in January, we will also have two short presentations by two of our members. One will be a report on a train trip by one member, and the other, a member will report on the recent Norfolk Southern purchase of the CNO&TP from the city of Cincinnati. Thanks to Shawn and Thomas for being willing to present to us. We hope to have more short presentations in the future months on a variety of subjects. If you are interested in presenting on some aspect of trains, either prototype or model, please contact me and we can put you on the schedule. There is a lot of information out there that can be shared with other members.

We are planning a board meeting on T-Trak for January 10 at 7 PM. If you are interested in listening to this meeting, please inform Bob Belt for the Zoom link. It is still winter outside so stay warm and work on



Continued on page 3

In Recognition...

Many thanks to folks listed in the column below. They have given their support for our club. We encourage all NMRA members to help with financial support to *The Lantern* and our website and the Division 10's activities. **Send your monetary contribution to our Treasurer.**

To be listed here your contribution needs to be at least \$20 in cash, or material valued at \$50, or a total of 20 hours time within the last year. Division 10 receives NO monetary support from the NMRA or the MidCentral Region. Div.10 is recognized by the US government as a 501c3 corporation and your cash or material donations may be tax deductible.

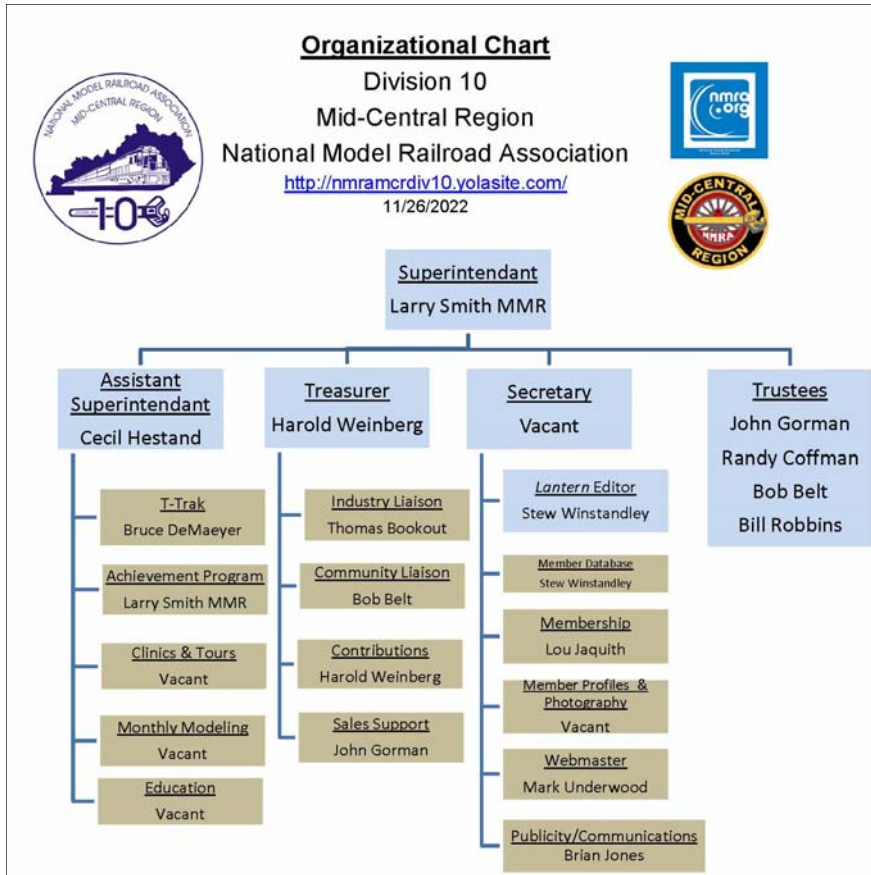
Report materials or time to Stew Winstandley. To the right of each contributing member's name is the month of his or her latest contribution. Whenever one makes a contribution of money, material, or time, his or her date will be updated, and for new contributors, their name will be added. Anyone making a contribution will be listed below for 12 months.

John Wilshire	6/2022
Clay Faulconer	4/2022
Larry Smith	4/2022
Randy Coffman	1/2022
Harold Weinberg	1/2022



For the NMRA MC Region officers link to www.midcentral-region-nmra.org/bod2.html

The Lantern is a monthly (except July) publication of Division 10, Mid Central Region (MCR), National Model Railroad Association (NMRA). All opinions expressed herein are those of the authors, and do not necessarily reflect those of Division 10, the MCR, the NMRA, or anyone else.



Division 10's advertising policy:

1. Newsletter • \$10/month for business card • \$15/month for 1/8 page or less • \$25/month for 1/4 page • \$45/month for 1/2 page • \$80/month for full page • Multiple separate ads can be aggregated together for the above price structure.
2. Web site: No commercial ads allowed.

- Website** addresses are: 1) above at top of Organization Chart, 2) <https://www.facebook.com/NMRA.MCR.Div10/> and 3) <http://ttrak.wikidot.com/nmra-mcr-division-10-the-kentucky-division> 4) YouTube.com search: Division 10 Mid Central Region NMRA, Past Div. 10 clinics are available on YouTube.

Division 10 Treasurer: Give or send your contribution to Harold Weinberg, 8 Lansdown Estates, Lexington, KY 40502-3322.

Twelve Month Review—Beginning Bank Balance 12/1/2021 \$9,592.30

Income

Member Contributions	310
Total Income	\$310

Expense

Zoom License	149.90
Computer Service/Repair	177.94
Yola License (Web Site)	143.45
Total Expense	\$471.29

Ending Balance 12/1/2022 \$9,431.01

Division's PayPal account contains \$48.16

those model railroading projects for now. As the weather warms up in a few months, we can then get out and do some more visiting. Our Trains Day at the Library will be coming up in the Spring, so be on the watch for that event. Stay safe and take care of yourselves.

— Larry Smith

Plastics Review by Cecil Hestand

Subjects to be reviewed over the next three months.

1. Plastics.
2. Injection molds & part design.
3. Injection molding process.

Part 1. Plastics.

There are two basic types of plastics.

The first one is thermoset. It's mainly used for high heat or good electrical insulation properties. Parts are made by a chemical process and the parts are not recyclable. The most recognizable grade is Bakelite, examples: (ash tray, circuit breakers, and distributor caps).

The second one is thermoplastics. There are probably around a dozen basic types. There are hundreds of grades in each one, mainly by additives added to obtain different types of properties, such as for strength, wear, lubrication, conductivity, etc. Thermoplastics are made by a physical process and all parts and the scrap can be recycled, but the cost to collect and reprocess them is high. Even though you see it advertised it is only recycled to be green. The cost to transport and reprocess uses more energy than the actual resin cost. Most of the scrap ends up in the landfills. The most recognizable grades are: Acrylic, Polycarbonate (PC), Polyethylene (PE), Polypropylene (PP), Polyvinyl Chloride (PVC), Styrene, nylon, acetal, and ABS. The cheapest ones are PP & PE. PP does not hold its shape very well (warps) and does not stand up to heat. PE is very brittle. The third cheapest is ABS, which is used in a lot of model train parts. It does not warp very much and is okay heated. I'm not sure what the engines are made of due to the heat of the motor.

Most plastic gears are molded either out of nylon or acetal. Most trains gears alternate the materials, running a nylon gear against an acetal gear. This provides for very good wear and low sound. Nylon has one bad property in that it absorbs water, and as it does it expands. This can cause gears to jam. The other problem is when it's pressed onto a shaft, as it expands or dries out, it will crack the gear. I think we have all seen or heard this in our engines.

Most grades are selected for their properties, or of their cost.

Next month's section will be on injection molds and part design.

TRAIN SHOW & SALE

OUR 33RD YEAR



SATURDAY, MARCH 18, 2023 10:00 AM to 3:00 PM
HOLY FAMILY PARISH SAFFIN CENTER
3938 POPLAR LEVEL RD, LOUISVILLE, KY 40213

- MODEL TRAINS IN ALL SCALES
- OPERATING LAYOUTS AND DISPLAYS
- RETAIL SALES - OVER 100 DEALER TABLES
- MODEL RAILROAD EDUCATION
- JOIN THE NMRA - NATIONAL MODEL RAILROAD ASSOCIATION
- HOURLY DOOR PRIZES!
- GREAT FOOD & BEVERAGES
- FREE PARKING

\$6.00 PER PERSON – CHILDREN 12 AND UNDER FREE WITH AN ADULT
SPONSORED BY DIVISION 8 - MID CENTRAL REGION - NMRA
 FOR MORE INFORMATION VISIT
 WEBSITE: <http://div8-mcr-nmra.org>

ADVANCE TICKETS: <https://tinyurl.com/March2023TrainShowTickets>

ADVANCE TICKETS	DEALER INFORMATION	WEBSITE
		

THE LANTERN

NEWSLETTER FOR NMRA MCR DIVISION 10

210 BRANNON RD.
NICHOLASVILLE, KY 40356-9711
nmramcrdiv10.yolasite.com



The Division 10 T-Trak layout was set up in December at the Lexington VA Center on Leestown Road. Bob Belt is at the far left.

JAN. 7, 1:30

ZOOM & IN-PERSON, TC LIB.,
3628 WALDEN DR., 40517

SHORT PRESENTATIONS

SCENERY AP, CNO&TP SALE,
DURANGO & SILVERTON

MEETING AGENDA

BUILDING THE WHITEFISH
DEPOT, BRUCE DEMAEYER

TOURS

NONE



AROUND THE BEND

MON.	DAY	HOST	PLACE	EVENT / PROGRAM	TOURS	Short Clinics
Jan.	7	Div. 10	Tates Creek Library and on Zoom	Whitefish Depot, Bruce DeMaeyer	None	Scenery AP, CNO&TP sale, & Durango
Feb.	4	Div. 10		Beginning Operations, Eric Smith	None	Civil AP
March	4	Div. 10		A.P. Certificate in Prototype Modeling, Pete Birdsong	Bob Ferguson's, March 19, 1-4	Scratch Built Cars or Structures AP
March	18	Div. 8	3938 Poplar Level Rd, Louisville 40213	Train Show & Sale, 10 to 3	Layouts	
April	1	Div. 10		CV Variables and How to Use Them, John Gorman	None	Electrical AP

<https://zoom.us/download> - The web browser client for Zoom meetings will download automatically when you start or join your first Zoom meeting. Whether you are doing a Zoom for the first time or have done it before, use the link (web address) that will be emailed to you the first week of January for the meeting.