



# THE LANTERN



APRIL 2023 VOLUME 25 ISSUE 4

## From the Superintendent

I recently attended my mandatory annual training meeting at the Bluegrass RR Museum in Versailles. Part of the meeting was inside and part was spent outside in the cold, learning the proper way to uncouple railcars, handle a switch, and then couple up the train to the rest of the cars. One may not actually have to switch much, if any, but a conductor needs to know how in case it has to be done. It helped to have some guys, who worked on the railroads, there to assist and answer questions. Comparing the real thing to switching on a model railroad, it took a whole lot more time to get it done. But then the consequence of a mistake on the prototype is much worse.

Our next meeting will be on a SUNDAY, April 2, and not on a Saturday as usual. The library is now opening up more on Sundays, and as I promised, we will now meet on Sundays if possible. I have heard a number of comments from members saying Saturdays are too busy with other events and they prefer Sundays. We will be meeting in the small conference room at Bates Creek library. It would be nice if someone brought what they are working on to the library meeting so we can see what members are doing. Maybe we will have some interaction.

Our presentation on SUNDAY, April 2, will be by Eric Smith on "Beginning Operations". Eric will tell you what you should be aware of if you are thinking about operations on your layout. Eric Smith is a major actor in the OpSig group. Hopefully you will at some point think about doing operations since it is a fun activity, much more than just watching your trains go around the layout. You could also achieve the AP award for Dispatcher. Besides what Eric will present, there is assistance available within Division 10. I have received an email from Rich Murphy, and he had to **CANCEL** his layout tour on April 16.

For future programs, we will hear from our own Mark Underwood on May 13, a SATURDAY, on "JMRI: Overview of New and Updated Features". JMRI can do a lot for you and your layout, not just in operations. Note: May

13 is a week later than usual because of the regional convention, and on a Saturday since the next day is Mother's Day. On June 3, a SUNDAY, Michael Hauk will present an "Introduction to Static Grass". I saw him give this clinic at the Indy convention and he did an excellent job. He had good ideas and a lot of practical advice.

Speaking of conventions, I hope you are planning to go to the regional convention in Pittsburgh on May 4-7. Dennis Coglianesse, during our last meeting, gave us some good information on it and it sounds like it will be a very good convention. When I go I look for interesting clinics and opportunities for operations. It is also nice to meet and talk with other model railroaders. The hotel price is reasonable. There are a lot of activities available, both rail and non rail related. Dennis also mentioned they will offer a light breakfast and lunch in the convention area near the clinics. I saw this for the first time at the Indy convention and it was a great idea and very popular, saving time and money for the attendees. Please think about going. It is not too late to sign up and I am sure you will have a good time. I know some of you are going. If you are, please send me an email ([larry.ksmith@yahoo.com](mailto:larry.ksmith@yahoo.com)). Thanks.

I recently sent out an email about our future meetings, layout tours, and some train related events. I hope you will find it useful. One item upcoming is our own "Trains Day at the Library". We do it to have the public learn about model railroading; maybe some prototype railroads, and hopefully we can recruit new members. It will be Saturday, April 22 from 2 to 4 PM in the large conference room at the Bates Creek library. Please try and come out to visit with the public and other members, and make this event a success. We want to see you there. The library will do their part by featuring trains the week before the event and they will also publicize it.

I got an email about an event in Ravenna that I had not known about. On April 8, a Saturday, there will be Easter Bunny rides at Ravenna. <https://www.kentuckysteam.org/events>.

—Larry Smith



For the NMRA MC Region officers link to [www.midcentral-region-nmra.org/bod2.html](http://www.midcentral-region-nmra.org/bod2.html)

*The Lantern* is a monthly (except July) publication of Division 10, Mid Central Region (MCR), National Model Railroad Association (NMRA). All opinions expressed herein are those of the authors, and do not necessarily reflect those of Division 10, the MCR, the NMRA, or anyone else.

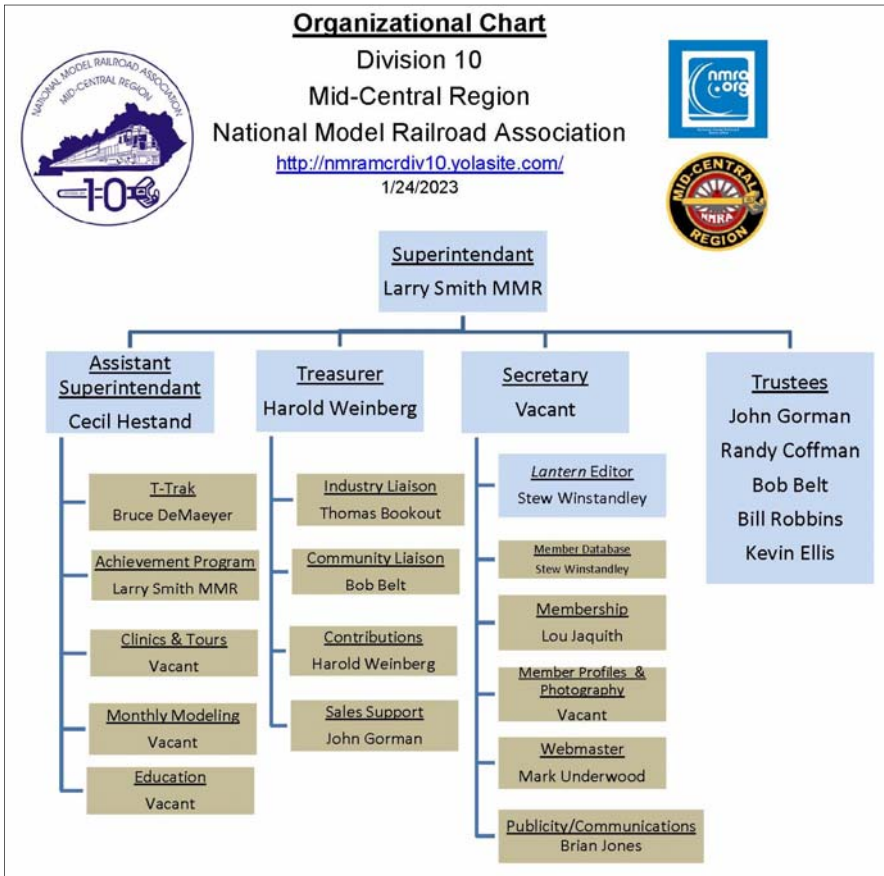
## In Recognition...

Many thanks to folks listed in the column below. They have given their support for our club. We encourage all NMRA members to help with financial support to *The Lantern* and our website and the Division 10's activities. **Send your monetary contribution to our Treasurer.**

To be listed here your contribution needs to be at least \$20 in cash, or material valued at \$50, or a total of 20 hours time within the last year. Division 10 receives NO monetary support from the NMRA or the MidCentral Region. Div.10 is recognized by the US government as a 501c3 corporation and your cash or material donations may be tax deductible.

Report materials or time to Stew Winstandley. To the right of each contributing member's name is the month of his or her latest contribution. Whenever one makes a contribution of money, material, or time, his or her date will be updated, and for new contributors, their name will be added. Anyone making a contribution will be listed below for 12 months.

Randy Coffman	1/2023
Harold Weinberg	1/2023
John Wilshire	6/2022
Clay Faulconer	4/2022
Larry Smith	4/2022



Below: Thermal generators on a MILW caboose, Model is also pictured, bottom.



### Division 10's advertising policy:

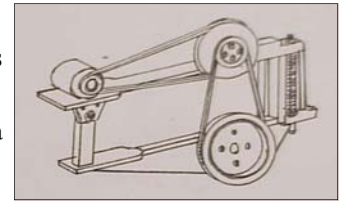
- A. COMMERCIAL AD RATES 1. Newsletter • \$10/month for business card • \$15/month for 1/8 page or less • \$25/month for 1/4 page • \$45/month for 1/2 page • \$80/month for full page • Multiple separate ads can be aggregated together for the above price structure.
2. Web site: No commercial ads allowed.

- Website addresses are: 1) above at top of Organization Chart,
- 2) <https://www.facebook.com/NMRA.MCR.Div10/> and
  - 3) <http://ttrak.wikidot.com/nmra-mcr-division-10-the-kentucky-division>
  - 4) YouTube.com search: Division 10 Mid Central Region NMRA, Past Div. 10 clinics are available on YouTube.

**Division 10 Treasurer:** Give or send your contribution to Harold Weinberg, 8 Lansdown Estates, Lexington, KY 40502-3322.

## Caboose Generators

I recently read that the Southern had 40 cabooses in local service (X200+) that had solar panels on the roof. I then did some searches to learn about caboose generators. Not all of them had electricity, but those with generators, batteries were charged, the majority were driven off of a truck. I also found wind and thermal generators. Without a generator, a deep cycle battery or two will run the lights.



So if you have caboose models, do they have generators? I have one HO caboose model, a Monon wide vision cupola, like the Monon prototype at the BGRM. The model is by Overland and is well detailed, but no generator. Photo below right. Overland did sell a SOUTHERN caboose that had solar panels. Photo on page 4.

The caboose in Midway still has an internal truck pulley generator, Photo is below at the left bottom. Some of the truck mounts were on the outside, and in N scale Micro-trains sells a caboose truck with a generator, seen on the left axle. A HO scale add-on is available.



The wind generator was installed on FLORIDA EAST COAST cabooses, and the cabooses were sold, and when run on **auto-train** the wind generator was still in use. Generator is on the roof to the left of the cupola.

An interesting thermal generator was installed on MILWAUKEE ROAD cabooses. There are O and HO scale MILW models that have the roof mounted thermals. Photos on page 2.

Comments from Thomas Bookout: “The Monon caboose at BGRM had a belt driven generator off one axle, seems like the pulley is still there but believe the generator is gone. The Southern caboose had a gear driven generator on one axle, but it too is gone. All electrical systems were DC and used batteries

in addition to the generator. Voltage could vary depending on the preference of the railroad, but many were 32 volt or 64 volt, which were commonly used on passenger cars and on the low voltage side of locomotives.” —Stew Winstandley



Note: Monon is credited for building the first steel wide vision caboose.



# THE LANTERN

NEWSLETTER FOR NMRA MCR DIVISION 10

210 BRANNON RD.  
NICHOLASVILLE, KY 40356-9711  
nmramcrdiv10.yolasite.com



Photo below: Caboose model with solar panels, insert is of a prototype.

APRIL 2, 1:30

ZOOM & IN-PERSON, TATES  
CREEK LIBRARY, 3628 WALDEN  
DR, 40517

## SHORT PRESENTATIONS

BUILDING A LAYOUT DECK

## MEETING AGENDA

BEGINNING OPERATIONS, ERIC  
SMITH

## TOURS

NONE



## AROUND THE BEND

MON.	DAY	HOST	PLACE	EVENT / PROGRAM	TOURS	Short Clinics
April	2 (Sun.)	Div. 10	Tates Creek Library and on Zoom	Beginning Operations, Eric Smith	None	Building a layout deck, Bruce DeMaeyer
April	22	Div. 10, co sponsor	Tates Creek Library	Trains Day at the Library	T-Trak layout	
May	4-7	Div. 2	Doubletree, 910 Sheraton Dr, Mars, PA 16046	MCR Regional Convention	Layouts, Clinics, other tours	<a href="http://keystonedivision.org">Rails to Pittsburgh (keystonedivision.org)</a>
May	13 (Sat.)	Div. 10	Tates Creek Library and on Zoom	JMRI: Overview of new and updated features, Mark Underwood	Bill Robbins, May 21, 1-4	Steam Engines Explained, Randy Coffman
June	4	Div. 10	Zoom only	Introduction to Static Grass, Michael Hauk	Harold Weinberg, June 18, 1-4	Panama Canel RR

<https://zoom.us/download> - The web browser client for Zoom meetings will download automatically when you start or join your first Zoom meeting. Whether you are doing a Zoom for the first time or have done it before, use the link (web address) that will be emailed to you the last week of March for the meeting.