



THE LANTERN



MAY 2023 VOLUME 25 ISSUE 5

From the Superintendent

Spring seems to have arrived. The good weather allowed me to throw out some grass seed along with some lime, and to add more mulch around the flowers. I did manage to work some on the layout, using up some of the scenic materials I have been keeping in boxes under the layout. Besides the spring projects, I hope you managed to do some model railroading also.

Our next meeting will be Saturday, May 13, at the Bates Creek library. Notice this is a **week later** than the first Saturday of the month due to the MCR convention in Pittsburgh. Also notice it is on a **Saturday**, not a Sunday. Sunday is Mother's Day and I wished to avoid having a meeting on Mother's Day. The clinic that day will be presented by our own Mark Underwood who will present "JMRI: Overview of New and Updated Features". Although I use JMRI because of its benefits, I do not keep up with all the new additions and features, so this will be a help to me. I am working on a mini clinic for that meeting also. I hope you will attend, either in person or on Zoom. The Zoom link will be emailed a few days before the meeting. If you appear in person, please bring on which you have been modeling.

Our next meeting after May will be a Sunday, June 4. Michael Hauk, superintendent of division 12 MCR will give us an "Introduction to Static Grass". I heard Michael give this clinic at Indy and he did an excellent job of telling us what we needed to know and how to do it, along with tips to be successful.

Alter June we will not have any scheduled meetings until September. We have traditionally not had meetings in July so members could attend the National NMRA convention. In August we have been going to the Grossers near Eubank, but after talking with some of the members, the consensus was to not go this year. I wish to thank Ray and Renee Grosser for allowing our division to visit them for many years. They have been the greatest hosts. They enjoyed having us come and we enjoyed visiting with them. Thanks again to the Grossers.

Remember, we are still having our informal meetings in the evening (I call them "John" meetings) where we discuss model railroading and other topics. These are at 7 PM on the first and third Tuesday of the month. If you would like to join us, please contact Bob Belt (beltbob1@gmail.com) to receive the Zoom invite to participate or just listen. This is a good way to keep in contact with other members of our division.

Bruce DeMaeyer has agreed to set up a series of mini clinics on subjects in model railroading basics.

Thanks to Bill Parker for donating his T-Trak module to the division. Photo on page 4. The Trains Day at the Library was a huge success. The attendance was counted as 141. T-Trak layout photos are on page 3. Division 10 also had an HO layout and Harold's O scale switching layout. Tom Bensberg commented "I appreciate all the work by everyone involved, including the library staff. My grandson was entertained for three hours with the



For the NMRA MC Region officers link to www.midcentral-region-nmra.org/bod2.html

The Lantern is a monthly (except July) publication of Division 10, Mid Central Region (MCR), National Model Railroad Association (NMRA). All opinions expressed herein are those of the authors, and do not necessarily reflect those of Division 10, the MCR, the NMRA, or anyone else.

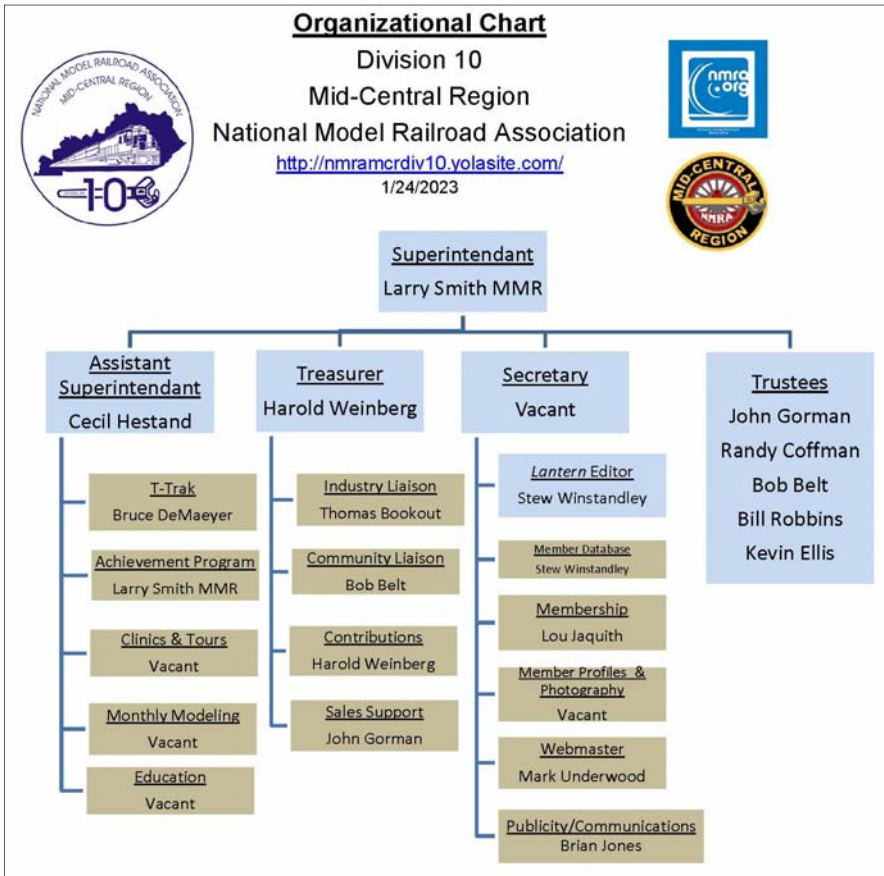
In Recognition...

Many thanks to folks listed in the column below. They have given their support for our club. We encourage all NMRA members to help with financial support to *The Lantern* and our website and the Division 10's activities. **Send your monetary contribution to our Treasurer.**

To be listed here your contribution needs to be at least \$20 in cash, or material valued at \$50, or a total of 20 hours time within the last year. Division 10 receives NO monetary support from the NMRA or the MidCentral Region. Div.10 is recognized by the US government as a 501c3 corporation and your cash or material donations may be tax deductible.

Report materials or time to Stew Winstandley. To the right of each contributing member's name is the month of his or her latest contribution. Whenever one makes a contribution of money, material, or time, his or her date will be updated, and for new contributors, their name will be added. Anyone making a contribution will be listed below for 12 months.

Randy Coffman	1/2023
Harold Weinberg	1/2023
John Wilshire	6/2022
Clay Faulconer	4/2022
Larry Smith	4/2022



The C&O model is from Micro-Trains® .

The photo below shows the 'A' door that is mentioned in the text on page 3.



Division 10's advertising policy:

- A. COMMERCIAL AD RATES 1. Newsletter • \$10/month for business card • \$15/month for 1/8 page or less • \$25/month for 1/4 page • \$45/month for 1/2 page • \$80/month for full page • Multiple separate ads can be aggregated together for the above price structure.
2. Web site: No commercial ads allowed.

- Website addresses are: 1) above at top of Organization Chart,
- 2) <https://www.facebook.com/NMRA.MCR.Div10/> and
 - 3) <http://ttrak.wikidot.com/nmra-mcr-division-10-the-kentucky-division>
 - 4) YouTube.com search: Division 10 Mid Central Region NMRA, Past Div. 10 clinics are available on YouTube.

Division 10 Treasurer: Give or send your contribution to Harold Weinberg, 8 Lansdown Estates, Lexington, KY 40502-3322.

club layouts, crafts and train toys and other kids in the play area.” Jim Williams’ granddaughter also

enjoyed a couple of hours at Trains Day.

—Larry Smith

Left: Frank Stevenson wiring the layout during setup. Right: The completed operating T-Trak layout at the library with Kevin Ellis.



Baggage cars in special service

Racehorses riding the rails? It was a bigger business than you'd expect!

For over a century the railroads were the safest and fastest way to move these valuable thoroughbreds across the country to various racetracks and events. A commodity this valuable would never be trusted to standard stock cars and over a dozen railroads, including the Southern and the C&O, had specialized cars for this service. Baggage-Horse cars were used to transport the finest racing and show horses nationwide.

Operational-wise, Baggage-Horse cars often ran in premier train service or specials to expedite their delivery of the horses. The horse trainer typically rode with the horses, while the owner rode in luxury a few cars back in the people part of the train. Typically, these cars were coupled at the front of the train closest to the locomotive. This allowed a smoother ride - less slack action - and the ease for the engineer to switch out the cars at the race track or fair grounds without any delays.

These Baggage-Horse cars typically carried 12 to 16 horses per car. The "A" end had a full end door (see photo on page 2) for loading automobiles. Many horse trainers use this end of the car to ship their automobile and equipment for their racing or polo horses. In the original horse carrying configuration, they carried a 380 gallon air pressure water system (A.P.W.S.) tank and had the standard UC brake gear.

C&O had good traffic in thoroughbred horses being shipped via Railway Express and had a number of cars, with its service through Lexington and Louisville, Kentucky. The model is of No. 212, originally built in 1913 and rebuilt by C&O shops in 1941. C&O also had nine horse express cars, built in 1937.



THE LANTERN

NEWSLETTER FOR NMRA MCR DIVISION 10

210 BRANNON RD.
NICHOLASVILLE, KY 40356-9711
nmramcrdiv10.yolasite.com



Below is pictured the latest Division 10 T-Trak module, created by Bill Parker. This new module was part of the layout operating at the Trains Day at the Tates Creek Library, April 22nd. More photos on 3.

MAY 13, 1:30

ZOOM & IN-PERSON, TATES CREEK LIBRARY, 3628 WALDEN DR, 40517

SHORT PRESENTATIONS

BGRM

MEETING AGENDA

JMRI NEW & UPDATED FEATURES, MARK UNDERWOOD

TOURS

BILL ROBBINS, MAY 21 1-4



AROUND THE BEND

MON.	DAY	HOST	PLACE	EVENT / PROGRAM	TOURS	Short Clinics
May	4-7	Div. 2	Doubletree, 910 Sheraton Dr, Mars, PA 16046	MCR Regional Convention	Layouts, Clinics, other tours	Rails to Pittsburgh (keystonedivision.org)
May	13 (Sat.)	Div. 10	Tates Creek Library and on Zoom	JMRI: Overview of new and updated features, Mark Underwood	Bill Robbins, May 21, 1-4, 4704 Sunny Point	Blue Grass RR Museum update
June	4	Div. 10	Zoom only	Introduction to Static Grass, Michael Hauk	Harold Weinberg, June 18, 1-4	Panama Canel RR
July & Aug.		Div. 10		No meetings		
Sept.	3	Div. 10		Water on the Layout, Don Banks		Steam Engines Explained, Randy Coffman

<https://zoom.us/download> - The web browser client for Zoom meetings will download automatically when you start or join your first Zoom meeting. Whether you are doing a Zoom for the first time or have done it before, use the link (web address) that will be emailed to you the second week of May for the meeting.