



# THE LANTERN



AUGUST 2023 VOLUME 25 ISSUE 8

## From the Superintendent

The weather is hot and muggy but it is the middle of July. I spent the past weekend with the Bluegrass RR Club at the Shriner's Temple running trains and helping to show off the layouts. Another member of our division is also working here and I saw a half dozen of our members attended. We all enjoy model railroading.

### Upcoming Meetings

Our next meeting is August 6 and it will be **Zoom only**. It will start at **2 PM** instead of 1:30 PM. Our clinician that day will be Andy Blenko who was to present at the Pittsburgh Regional NMRA convention before he became ill. His subject will be "Track Geometry" which has been discussed on our groups.io. To quote from his description, "An overview of track geometry principles used in the design of prototype railroads and their application to model railroads. Topics covered include track spacing, curve radius, turnouts, reverse curves, grades, vertical curves, spiral easements, and super elevation." Information we can use.

In future months, we will have Dan Banks presenting "Water on the Layout" on September 3 on Zoom and in person in the small conference room at Tates Creek library. I have talked to Dan at Indy and it sounds like he is quite proficient at handling water on a layout in all forms. It will be an interesting and useful clinic since water is common on most layouts. The next month after that will be October 1 and the presenter will be Don Winn on "Kitbashing, thinking outside the Walther's Box". Don will be giving this clinic at the national NMRA convention in August, and to quote him from his description, "You need dozens, perhaps hundreds, of structures for your home or club layout. There is not enough time to scratch build them all, but building a kit to the instructions leaves you with a layout that looks more like a Walthers sales display and less like the unique railroad you are trying to present. Also, many of the spaces you have on your railroad are oddly shaped where a rectangular building won't fit. We'll discuss tips and tricks to help you build structures that fit your layout and will hopefully inspire you to customize your buildings to tell your railroad's story". I saw this clinic at an earlier convention in Oklahoma and it is excellent in providing us modeling information.

### Visit to John Bowling's Layout

Also coming up is the visit to the layout of John Bowling in Danville on Sunday, August 20, from 1 to 4 PM. His address in Dan-

ville is 406 N Maple Ave. (US127). The layout is located in the building behind the main house and parking is limited but available. Division 8 has also been invited so you may see some members from Louisville. John's detailed layout has numerous mini scenes which feature central Kentucky locations. His layout is a crowd pleaser and not to be missed.

### Swap Meet

The Bluegrass RR Club has agreed to hold a swap meet with our Division 10 members. It is scheduled for October 13, a Friday, starting at 7:30 PM in the Meadowthrope Presbyterian Church at 356 Hillsboro Avenue. The church is located in the back of the Meadowthrope subdivision which is located on the northwest side of Lexington off of West Main Street. Tables and admission are free, so bring your unwanted items to sell and/or money to buy those things you really need.

### Ravenna RR Festival

The Ravenna RR Festival will be held on September 9-10 in Ravenna, KY. Our T-Trak layout is expected to be one of the many attractions, so come out and enjoy. Website with more information is: <https://www.railroadfestival.com>.

### Train Shows

The division 7 train show in the Cincinnati area is Oct. 14-15, and the division 8 train show in Louisville is November 11. Both are being held at their previous locations.

### Lou Jaquith

Mentioning again that one of our members, Lou Jaquith, is downsizing his layout and has much HO material, free to go to a good home. Lou has available track, roadbed, homasote, and several finished sections including a four track yard. If interested, give Lou a call at 859-276-1358.

### Groups.io for Division 10

Bruce DeMaeyer has been putting some great mini clinics on our Division10groups.io. He has done a lot of work supplying us with some excellent ideas and information. I would like to thank Bruce for doing this for us and I am also glad to see other members respond and contribute additional information to these mini clinics. This is one thing we should all be doing, passing modeling information to each other. Bruce is only putting the mini clinics on Division10groups.io. If you are

## In Recognition...

Many thanks to folks listed in the column below. They have given their support for our club. We encourage all NMRA members to help with financial support to *The Lantern* and our website and the Division 10's activities. **Send your monetary contribution to our Treasurer.**

To be listed here your contribution needs to be at least \$20 in cash, or material valued at \$50, or a total of 20 hours time within the last year. Division 10 receives NO monetary support from the NMRA or the MidCentral Region. Div.10 is recognized by the US government as a 501c3 corporation and your cash or material donations may be tax deductible.

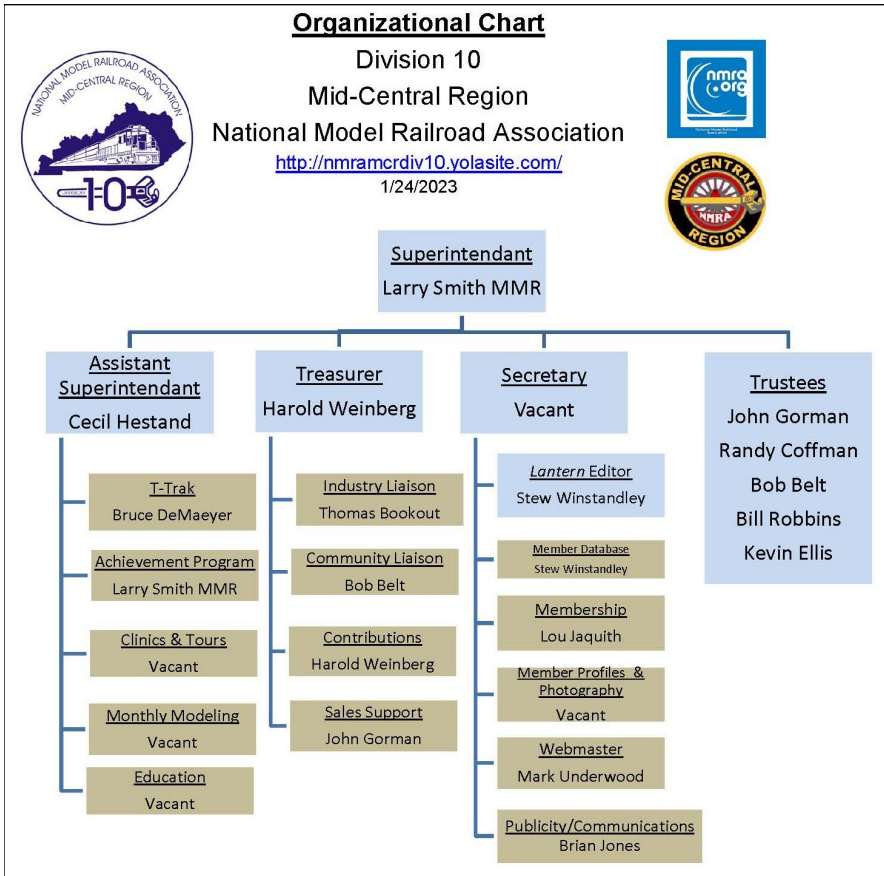
Report materials or time to Stew Winstandley. To the right of each contributing member's name is the month of his or her latest contribution. Whenever one makes a contribution of money, material, or time, his or her date will be updated, and for new contributors, their name will be added. Anyone making a contribution will be listed below for 12 months.

Randy Coffman	1/2023
Harold Weinberg	1/2023
John Wilshire	6/2022



For the NMRA MC Region officers link to [www.midcentral-region-nmra.org/bod2.html](http://www.midcentral-region-nmra.org/bod2.html)

*The Lantern* is a monthly (except July) publication of Division 10, Mid Central Region (MCR), National Model Railroad Association (NMRA). All opinions expressed herein are those of the authors, and do not necessarily reflect those of Division 10, the MCR, the NMRA, or anyone else.



### Division 10's advertising policy:

A. COMMERCIAL AD RATES 1. Newsletter • \$10/month for business card • \$15/month for 1/8 page or less • \$25/month for 1/4 page • \$45/month for 1/2 page • \$80/month for full page • Multiple separate ads can be aggregated together for the above price structure. 2. Web site: No commercial ads allowed.

Text generated by Bard (AI): "Kitbashing is a technique used by modelers to create custom structures by combining parts from different kits or scratch-built components. This can be a great way to add variety and realism to your model railroad layout." Photo below is of a scratch built structure by Larry Smith of the office building in the picture behind the model.

- Website addresses are: 1) above at top of Organization Chart, 2) <https://www.facebook.com/NMRA.MCR.Div10/> and 3) <http://ttrak.wikidot.com/nmra-mcr-division-10-the-kentucky-division> 4) YouTube.com search: Division 10 Mid Central Region NMRA, Past Div. 10 clinics are available on YouTube.

**Division 10 Treasurer:** Give or send your contribution to Harold Weinberg, 8 Lansdowne Estates, Lexington, KY 40502-3322.



not, send me an email at [larry.ksmith@yahoo.com](mailto:larry.ksmith@yahoo.com) and ask me to invite you to join. When you accept, then you can join the fun. Groups.io is just a way to more easily communicate with other members.

Speaking of communication with other members, I kept reading in other division newsletters about picnics, lunches, and other social meetings that are being held. They all say what a success it was, so it has me thinking that perhaps our division should try something like that. I need ideas and also some idea if division 10 members are interested. Where to have it? Bring food or buy it? If you are interested in such a social gathering please email me. I need to know how many members are interested and what type of gathering.

We still need more submissions to *The Lantern* from our members on modeling or any other train related topic. It could be something you wish to share, whether it is modeling or something with full size trains. Please consider passing on your experiences to other members. Contact Stew, our *Lantern* editor, with your submission.

As always, take care of yourself and others around you.

— Larry Smith

## <https://bard.google.com>

Railroad track geometry is the three-dimensional positioning of the rails and ties. It is concerned with the properties and relations of points, lines, curves, and surfaces in the track layout. The term is also applied to measurements used in design, construction, and maintenance of track.

The following are the main geometric design elements of railroad track:

- **Alignment:** The alignment of the track is the horizontal layout of the track. It is important for the smooth and safe operation of trains. The track should be aligned so that it is as straight as possible, with gradual curves.
- **Horizontal curves:** Horizontal curves are curves in the horizontal plane. They are necessary to allow trains to change direction. The amount of curvature in a horizontal curve is measured in degrees. The sharper the curve, the more curvature it has.
- **Superelevation:** Superelevation is the difference in elevation between the inside and outside rails of a horizontal curve. It is also known as cant. Superelevation is necessary to counteract the centrifugal force that acts on a train as it travels around a curve. The amount of superelevation required depends on the speed of the train and the degree of curvature of the curve.
- **Equilibrium cant:** Equilibrium cant is the amount of superelevation that is required for a train to travel around a curve at a given speed without experiencing any lateral forces.
- **Cant deficiency:** Cant deficiency is the difference between the actual superelevation of a curve and the equilibrium cant. Cant deficiency can cause trains to derail if it is too great.
- **Length of transition curves:** Transition curves are short sections of track that connect tangent track to horizontal curves. They are necessary to gradually transition from the straight track to the curved track. The length of a transition curve depends on the degree of curvature of the curve.
- **Gradients:** Gradients are changes in elevation along the track. They can be either uphill or downhill. Gradients are important for the efficient operation of trains. The steeper the gradient, the more power is required to pull the train.
- **Vertical curves:** Vertical curves are curves in the vertical plane. They are used to connect sections of track with different gradients. The length of a vertical curve depends on the difference in elevation between the two sections of track.
- **Point and crossing:** Points and crossings are track junctions where two or more tracks intersect. They are necessary for trains to change tracks.

The geometric design of railroad track is a complex and important subject. It is essential for the safe and efficient operation of trains.

The above was generated by artificial intelligence (AI) in a few seconds by using the Bard link above. With our next clinic about track geometry, I asked Bard to write about it. — Stew Winstandley

**THE LANTERN**  
 NEWSLETTER FOR NMRA MCR DIVISION 10  
 210 BRANNON RD.  
 NICHOLASVILLE, KY 40356-9711  
 nmramcrdiv10.yolasite.com



Below photo is of John Bowling's HO scale layout. We're invited to view his outstanding layout from 1 to 4 on August 20th. Don't miss this opportunity to see it.



**AUGUST 6, 2 PM**  
**ZOOM MEETING**  
**SHORT PRESENTATION**  
 NONE  
**MEETING AGENDA**  
 TRACK GEOMETRY, ANDY BLENKO  
**TOURS**  
 JOHN BOWLING, 406 N. MAPLE AVE., DANVILLE 40422, AUG. 20TH

**AROUND THE BEND**

MON.	DAY	HOST	PLACE	EVENT / PROGRAM	TOURS	Short Clinics
August	6	Div. 10	Zoom only	Track Geometry. Andy Blenko	John Bowling, Aug. 20, 1-4 in Danville	
Sept.	3	Div. 10	Zoom and in person	Water on the Layout, Dan Banks	Ravenna, T-Trak, Sept. 9-10	Steam Engines Explained, Randy Coffman
Oct.	1	Div. 10	Zoom and in person	Kitbashing, thinking outside the Walthers Box, Don Winn		
Sept.	8	Div. 10 & BGRRC	Meadowthorpe Presbyterian Church	Swap Meet, 7:30-?		
Nov.	5	Div. 10	Zoom and in person	Arduinos, why to use one, John Gorman		Scott County RR Museum, Chip Southworth

<https://zoom.us/download> - The web browser client for Zoom meetings will download automatically when you start or join your first Zoom meeting. Whether you are doing a Zoom for the first time or have done it before, use the link (web address) that will be emailed to you the first of August for the meeting.