



THE LANTERN



SEPTEMBER 2023 VOLUME 25 ISSUE 9

From the Superintendent

September is upon us and Fall will soon follow. Fall usually means some outside activities involving model railroading or train rides, so be sure to check the last page of the *Lantern* to see what is scheduled. By the time you read this *Lantern* the layout tour to John Bowling's will be past and I hope you went and saw a great layout (photos on page 2 and 4). I would have gone but I went to the National NMRA Convention in Texas.

Remember, the Swap Meet with the Bluegrass RR Club has been changed to Friday September 8th. This will be held starting at 7:30 PM in the Meadowthrope Presbyterian Church at 356 Hillsboro Avenue. It is labeled as a swap meet but it is a chance to sell what you do not need and buy what you really do want. Tables are free and first come, first serve but if you want one please tell me so I can reserve one. Be sure to put a price on the items so prospective buyers know what you are asking or the price from which to start bargaining. It will be an informal atmosphere to shop and to interact and socialize with other model railroaders.

The Ravenna RR Festival is September 9-10 and a fun event to attend. Our T-TRAK layout has been a feature of the activities and we are working on being there again this year. Website with information is <https://railroadfestival.com>.

Do not forget our Division 10 meeting on September 3rd. It will be hybrid, on Zoom and in person in the small conference room at Tates Creek library.

We will start at 2:00 PM rather than 1:30 PM, since the library opens at 1:00 PM. Our presenter that day will be Dan Banks who will give a clinic on "Water on the layout". He knows about water so it will be an interesting presentation.

In future months, Don Winn from the Lone Star region will present on October 1st "Kitbashing: Thinking outside of the Walthers model". I have seen his presentation and Don has some good ideas and presents them well. On November 5th, John Gorman will tell us about "Arduinos, why I want to use one". All I know is that Arduinos are a processor that can be programmed to do a lot of layout control stuff, and I want to know more about them for possible layout applications.

We also have mini-clinics at the meetings. Randy Coffman in September will tell us how a steam engine works. In October, Ed Butcher will give us an update on the Bluegrass Museum in Versailles. In November, Chip Southworth will tell us about the Georgetown/Scott Co. RR Museum that is being developed. We have plenty of room for all of you to attend the meetings and to hear some good presentations, so I encourage you to attend in-person. They will also be on Zoom.

The Bluegrass Museum in Versailles has partnered with Rail Explorers to provide an extra rail experience for persons wanting to ride the rails. You ride the rails on a bike like device which has a motor assist. I am sure the motor assist will be welcomed on the hill up from the Kentucky River. This is one of five locations Rail Explorers have across the country. They plan to run on

In Recognition...

Many thanks to folks listed in the column below. They have given their support for our club. We encourage all NMRA members to help with financial support to *The Lantern* and our website and the Division 10's activities. **Send your monetary contribution to our Treasurer.**

To be listed here your contribution needs to be at least \$20 in cash, or material valued at \$50, or a total of 20 hours time within the last year. Division 10 receives NO monetary support from the NMRA or the MidCentral Region. Div.10 is recognized by the US government as a 501c3 corporation and your cash or material donations may be tax deductible.

Report materials or time to Stew Winstandley. To the right of each contributing member's name is the month of his or her latest contribution. Whenever one makes a contribution of money, material, or time, his or her date will be updated, and for new contributors, their name will be added. Anyone making a contribution will be listed below for 12 months.

Randy Coffman	1/2023
Harold Weinberg	1/2023

The photo below was taken August 20th at John Bowling's layout. The lead locomotive of the consist was a green L&N 262 RS3. The text around the photo explains the color. Nine of these went to the L&N.

Louisville & Nashville 262 (ex-Rutland 206): When the former Rutland units arrived on the L&N, they were quickly patched and put into service, wearing their green and yellow

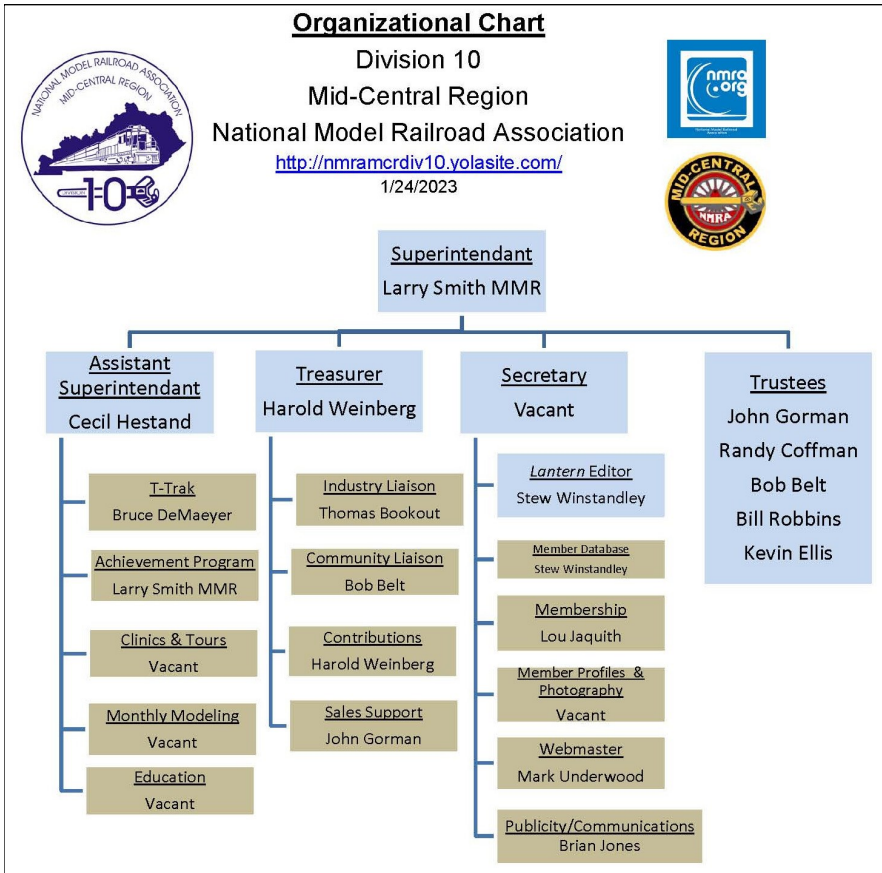


paint until they were traded in for new power just two years later.



For the NMRA MC Region officers link to www.midcentral-region-nmra.org/bod2.html

The Lantern is a monthly (except July) publication of Division 10, Mid Central Region (MCR), National Model Railroad Association (NMRA). All opinions expressed herein are those of the authors, and do not necessarily reflect those of Division 10, the MCR, the NMRA, or anyone else.



Division 10's advertising policy:

A. COMMERCIAL AD RATES 1. Newsletter • \$10/month for business card • \$15/month for 1/8 page or less • \$25/month for 1/4 page • \$45/month for 1/2 page • \$80/month for full page • Multiple separate ads can be aggregated together for the above price structure. 2. Web site: No commercial ads allowed.

Website addresses are: 1) above at top of Organization Chart,

2) <https://www.facebook.com/NMRA.MCR.Div10/> and

3) <http://ttrak.wikidot.com/nmra-mcr-division-10-the-kentucky-division>

4) YouTube.com search: Division 10 Mid Central Region NMRA, Past Div. 10 clinics are available on YouTube.

Division 10 Treasurer: Give or send your contribution to Harold Weinberg, 8 Lansdowne Estates, Lexington, KY 40502-3322.

days the train is not running, or after it comes into the station. Roger Clapham, one of our members, rode it with his granddaughters. His report follows. The website address is in his report.

Let's all try to get out more this fall. I will try to arrange some more layout tours for us. Harold Weinberg will have a layout tour on October 8th, so put that on your calendar. For myself, I will try to do some railfanning. I will not arrange any other social events since nobody responded to my request about interests or advice in the last *Lantern*. And if you have not joined us on groups.io for Division 10, please ask me by email for an invite. —Larry Smith (larry.ksmith@yahoo.com)

Rail Explorers of the Bluegrass

I first heard about this from a post on our Division10 groups.io. I looked up the Rail Explorers official web site (<https://www.railexplorers.net>) and showed it to my wife. We agreed that was something we might be interested in doing. We were watching our two granddaughters the last week of July and we thought they might enjoy this also, so I booked 4 of us for the Friday July 28, 12:30 Kentucky Rambler. I didn't know at the time that this was their first official day for the public to ride. We also didn't know it would be one of the hottest days of the summer. Note: trips are sold out for the remainder of the year.

We showed up at the Bluegrass Railroad Museum about a half hour early to check in. Unfortunately the museum is only open on Saturdays when the Scenic Railroad runs. About 10 minutes before our departure time they gave us a brief overview of what to expect and how to operate our 4 seater rail explorer. The two children sat in the front two seats while my wife and I sat in the rear seats. I acted as brakeman, and was told how to brake and signal to the car behind that I was braking. Our seats were all adjusted so that we could peddle comfortably, and then we were sent off one car at a time with up to a few hundred feet between cars.



The round trip is about 5 miles each way between the Bluegrass museum and the turnaround point at the Young's High Bridge, overlooking the Kentucky River. The first leg was mostly a slight downhill grade and even though the weather was very hot, we were mainly in the shade of trees, and we generated our own breeze. The ride is very bumpy so you get a free massage whether you want it or not. Once we reached the bridge we had about a 20 minute wait while the cars were turned around on the track. To do this, they had a little turntable device that lifted each car, turned it around and lowered it back to the track. After all cars were turned, we once again boarded our car and headed back. Being a slight uphill grade, we had to peddle a little harder, but it was still not hard at all. We all had a good time and I highly recommend it. — Roger Clapham

THE LANTERN
NEWSLETTER FOR NMRA MCR DIVISION 10

210 BRANNON RD.
NICHOLASVILLE, KY 40356-9711
nmramcrdiv10.yolasite.com



John Bowling, August 20th photo with his HO scale L&N layout. Another photo is on page 2. Thank you John for hosting our visit.

SEPTEMBER 3, 2 PM
TATES CREEK LIBRARY AND
VIA ZOOM

SHORT
PRESENTATION

NONE

MEETING AGENDA

WATER ON THE LAYOUT, DAN
BANKS

TOURS

NEXT TOUR IS AT HAROLD
WEINBERG'S ON OCTOBER
8TH.



AROUND THE BEND

MON.	DAY	HOST	PLACE	EVENT / PROGRAM	TOURS	Short Clinics
Sept.	3	Div. 10	Zoom and in person	Water on the Layout, Dan Banks	Ravenna, T-Trak, Sept. 9	Steam Engines Explained, Randy Coffman
Sept.	8	Div. 10 & BGRRC	Meadowthorpe Presbyterian Church	Swap Meet, 7:30—?		
Oct.	1	Div. 10	Zoom and in person	Kitbashing, thinking outside the Walthers Box, Don Winn	Oct. 8, 1-4, Harold Weinberg, 8 Lansdowne Estates	Update on the Blue Grass RR Museum, Ed Butcher
Oct.	14-15	Div. 7	8940 Union Center Blvd, West Chester, OH	Cincinnati Train & Trade Show, Lakota West High School, 11-5	Operating Layouts	
Nov.	5	Div. 10	Zoom and in person	Arduinos, why to use one, John Gorman		Scott County RR Museum, Chip Southworth

<https://zoom.us/download> - The web browser client for Zoom meetings will download automatically when you start or join your first Zoom meeting. Whether you are doing a Zoom for the first time or have done it before, use the link (web address) that will be emailed to you the first of September for the meeting.