



# THE LANTERN



---

OCTOBER 2023 VOLUME 25 ISSUE 10

---

## From the Superintendent

Fall is upon us, with cool mornings, leaves changing colors, and a crispness in the air. By the time you read this, it will be officially Fall by the calendar along with Mother Nature. The weather is nice, please plan to get outside some even if it is not for model railroading.

I just got back recently from the National NMRA Convention in Dallas. I had not planned to go but a friend's wife decided not to go and I knew my friend wanted to visit his old friends so I agreed to go with him. I enjoyed the convention immensely. I did not go on the tours or the layout visits but we did operations on a couple layouts and I saw a lot of clinics. A lot of really good clinics and some that entertained but did not match what the description implied. I got to talk with some old friends and met some new guys and girls. I was also elated to see two other Division 10 members at the convention. If you have not been to a convention, national or regional, you owe it to yourself to try one sometime.

While at the national convention, I saw again the clinic that is scheduled for our October 1 NMRA meeting which is "Kitbashing; Thinking outside of the Walthers Box" by Don Winn. Besides giving you useful and good information, Don presents it in a most entertaining way. We will begin at 2:00 PM October 1 and it will be hybrid, either on Zoom or in person at the Tates Creek library. We will be meeting in the large conference room so come on in and let's fill the place up. On November 5, we will have a presentation on "Arduinos, why would I

want to use one?" by our own John Gorman. We can all learn more about Arduinos and how we can use them on the layout. I sure want to. For December 3, we will meet again at 2 PM and the clinic will be "How to Build an A-Frame Turntable" and it will be presented by Rich Murphy.

For mini clinics, in October Ed Butcher will give us an update on the Bluegrass RR Museum, and in November Chip Southworth will present on the Georgetown/Scott County Railroad Museum. They have been quite active recently. In December, Mark Underwood, one of our own members, will present on the Electrical AP. All should be good and interesting to our members.

Do not forget about the train show in October in Cincy and brought to you by Division 7, and also the train show in November from Division 8 in Louisville. Both will be held in the same place as last time. Please check the last page of the newsletter for more details. Other events are also listed there.

I would like to have a layout tour in November, perhaps a Sunday afternoon from 1 to 4 PM. I am looking for a volunteer to set up and open their home to our members. Your layout does not have to be finished or huge, any stage is interesting and of value to have members come and look it over and discuss the layout with you and exchange ideas. Please contact me if you are willing to host a layout tour then, or any month. I can answer any questions you might have. Thanks.

—Larry Smith (larry.ksmith@yahoo.com)



For the NMRA MC Region officers link to [www.midcentral-region-nmra.org/bod2.html](http://www.midcentral-region-nmra.org/bod2.html)

*The Lantern* is a monthly (except July) publication of Division 10, Mid Central Region (MCR), National Model Railroad Association (NMRA). All opinions expressed herein are those of the authors, and do not necessarily reflect those of Division 10, the MCR, the NMRA, or anyone else.

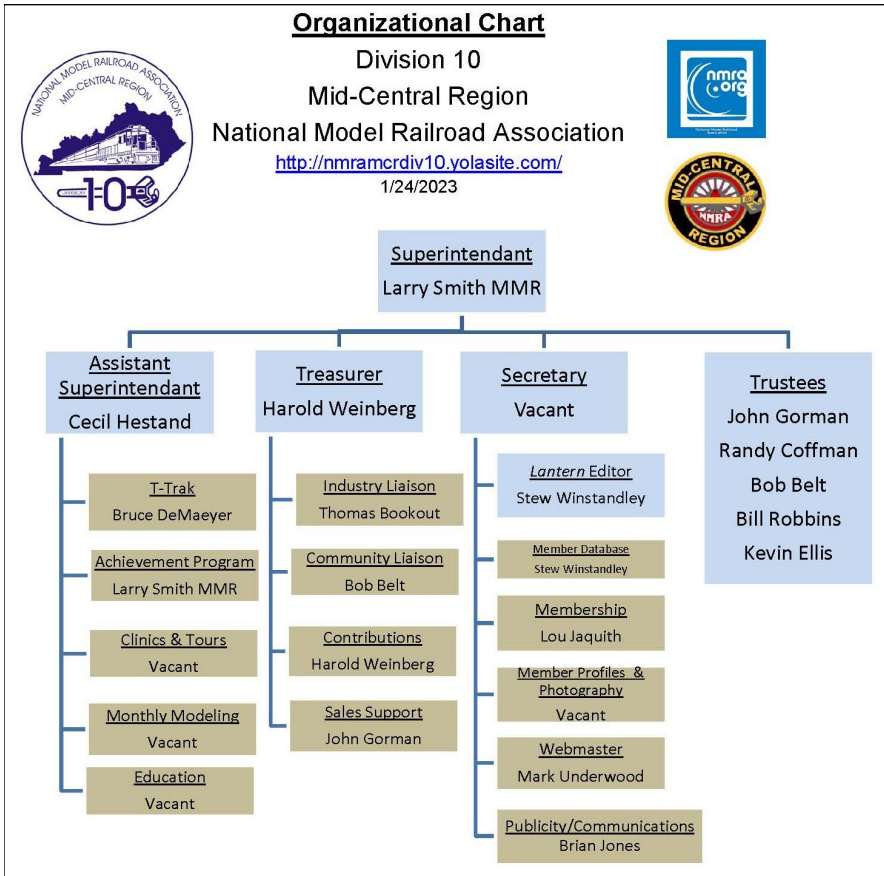
## In Recognition...

Many thanks to folks listed in the column below. They have given their support for our club. We encourage all NMRA members to help with financial support to *The Lantern* and our website and the Division 10's activities. **Send your monetary contribution to our Treasurer.**

To be listed here your contribution needs to be at least \$20 in cash, or material valued at \$50, or a total of 20 hours time within the last year. Division 10 receives NO monetary support from the NMRA or the MidCentral Region. Div.10 is recognized by the US government as a 501c3 corporation and your cash or material donations may be tax deductible.

Report materials or time to Stew Winstandley. To the right of each contributing member's name is the month of his or her latest contribution. Whenever one makes a contribution of money, material, or time, his or her date will be updated, and for new contributors, their name will be added. Anyone making a contribution will be listed below for 12 months.

Randy Coffman	1/2023
Harold Weinberg	1/2023



In the photo below, Bob Belt, right, received his Author Certificate of Achievement from Larry Smith.

### Division 10's advertising policy:

A. COMMERCIAL AD RATES 1. Newsletter • \$10/month for business card • \$15/month for 1/8 page or less • \$25/month for 1/4 page • \$45/month for 1/2 page • \$80/month for full page • Multiple separate ads can be aggregated together for the above price structure. 2.

Website addresses are: 1) above at top of Organization Chart,

2) <https://www.facebook.com/NMRA.MCR.Div10/> and

3) <http://ttrak.wikidot.com/nmra-mcr-division-10-the-kentucky-division>

**Division 10 Treasurer:** Give or send your contribution to Harold Weinberg, 8 Lansdowne Estates, Lexington, KY 40502-3322.



## The following was written by [bard.google.com](https://bard.google.com)

The Frisco RR E units are named for race horses. The St. Louis-San Francisco Railway (Frisco) named its E7 and E8 passenger diesel locomotives after famous race horses, not necessarily Triple Crown winners. The locomotives were painted red with gold trim, except for the ones used for "Texas Special" service with the Katy, which were red, yellow and off-white/imitation aluminum.

Some of the race horses that the Frisco E units were named after include:

- Citation
- War Admiral
- Man O'War
- Sea Biscuit
- Gallant Fox
- Whirlaway
- Exterminator
- Omaha
- Equipoise
- Count Fleet
- Assault

The Frisco E units were a popular sight for many years. They were retired from service in the 1970s, but they are still remembered by many railroad enthusiasts.

Photos of models are from a Google search.



# THE LANTERN

NEWSLETTER FOR NMRA MCR DIVISION 10

210 BRANNON RD.  
NICHOLASVILLE, KY 40356-9711  
nmramcrdiv10.yolasite.com

OCTOBER 1, 2 PM

TATES CREEK LIBRARY,  
3628 WALDON DR. AND  
VIA ZOOM

SHORT  
PRESENTATION

BLUE GRASS RR MUSEUM, ED  
BUTCHER

MEETING AGENDA

KITBASHING, PRESENTED BY  
DON WINN

TOURS

HAROLD WEINBERG'S ON  
OCTOBER 8TH.

Water can be a beautiful and dynamic addition to any model train layout. It can add realism and interest to your scene, and it can also be used to create a variety of different effects, such as lakes, ponds, rivers, waterfalls, and oceans. There are a number of different ways to add water to your model train layout. One of the simplest is to use a piece of Plexiglas or other clear plastic. Paint the underside of the plastic a watery shade of blue, then place it over the area where you want to create your water feature. You can then add additional details, such as rocks, sand, and vegetation, to create a more realistic effect.

Another option is to use a commercial water effect product. These products are available in a variety of different forms, such as liquids, powders, and gels. They can be used to create a variety of different water effects, depending on the product you choose and the technique you use.

If you want to create a more realistic water feature, you can use a combination of different techniques. For example, you could use a commercial water effect product to create a basic water surface, then add additional details, such as ripples and waves, using other materials, such as glue, paint, and sand.

— Bard.google.com

## AROUND THE BEND

MON.	DAY	HOST	PLACE	EVENT / PROGRAM	TOURS	Short Clinics
Oct.	1	Div. 10	Zoom and in person	Kitbashing, thinking outside the Walthers Box, Don Winn	Oct. 8, 1-4, Harold Weinberg, 8 Lansdowne Estates	Update on the Blue Grass RR Museum, Ed Butcher
Oct.	14-15	Div. 7	8940 Union Center Blvd, West Chester, OH	Cincinnati Train & Trade Show, Lakota West High School, 11-5	Operating Layouts	
Nov.	5	Div. 10	Zoom and in person	Arduinos, why to use one, John Gorman		Scott County RR Museum, Chip Southworth
Nov.	11	Div. 8	3938 Poplar Level Road, Louisville 40213	Train Show and Sale, 10-3, Saffin Center		
Dec.	3	Div. 10	Zoom and in person	Building an A-frame Turntable, Rich Murphy		Electrical AP, Mark Underwood

<https://zoom.us/download> - The web browser client for Zoom meetings will download automatically when you start or join your first Zoom meeting. Whether you are doing a Zoom for the first time or have done it before, use the link (web address) that will be emailed to you the last week of September for the meeting.