



# THE LANTERN



NOVEMBER 2023 VOLUME 25 ISSUE 11

## From the Superintendent

It is definitely Autumn with the color in the trees and a lot of model railroading activities. One train show has passed and another one is November 11th, sponsored by Division 8 in Louisville. Some members of our division will be manning the T-Trak layout, which is worth the price of admission. See page 4 of this issue for the address, and also for the other activates listed.

Tom Bensberg has been working on his layout. Photos from his layout are on page 2. Our Assistant Superintendent Cecil Hestand, emailed photos of his HO layout, one is below.

If you are interested in having members over to discuss your layout please contact me or a board member, listed in *The Lantern*. We have a layout tour in November! Bill Parker has invited us to see his layout on November 19th from 2 to 4 PM. This is the Sunday before Thanksgiving. Bill has built an outstanding O scale layout, with many structures and scenes. Bill scratch builds these scenes and he includes a lot of detail to illustrate everyday life. You definitely need to see this layout. Bill's layout is in a building at the back of 146 Penmoken Park in Lexington. The street is west off of Nicholasville Road, near Baptist hospital, just one block south of Rosemont Garden.

I saw Lou Jaquith at the last layout tour and he reminded me that he has pieces of his layout and track available to other members whom wish to have them. If you are interested, please contact Lou at [pnljake@gmail.com](mailto:pnljake@gmail.com).

The Bluegrass RR Club is the group that runs the model trains for Southern Lights at the Horse Park, on the north side of Lexington, from Thanksgiving to Christmas. They have layouts in G, Lionel, HO and N which are run each evening from 6 to 10 PM. It is fun to run the trains on their large layouts. They have some openings for persons to run trains and the Bluegrass RR Club is offering members of Division 10 the opportunity to run the trains. They are offering a special deal where for only \$5 you can become a member of their club for the rest of the year, and you will be able to run your trains at Southern Lights. If interested, contact

Shelby Jett at [shelbycjett@gmail.com](mailto:shelbycjett@gmail.com).

Our next NMRA meeting is Sunday, November 5th, beginning at 2 PM at Tates Creek library, in the small conference room. The presenter will be our own technology expert John Gorman, presenting "Arduinos, why would we want to use one?" John will tell us about Arduino processors and how they can be useful on the layout to accomplish a number of different controls electronically. I know a couple layouts where the owners are going to use Arduinos to control their signals. I had John develop for me a sound system using an Arduino where a passenger train arrives at the depot and an announcement is made. It is neat to hear a voice announcing something as the train pulls into the station. There are undoubtedly many more uses of Arduinos and John will discuss the possibilities.

On December 3rd, Rich Murphy will show us "How to Build an A-Frame Turntable." Rich is a great modeler so it will be a good presentation to improve your modeling skills. On January 7th, Charles Bogart will give a "Presentation on the TTI Yard." The TTI yard in Paris was utilized in hauling coal from the fields via CSX to the Ohio River for barge transportation. Charles always does a good presentation and we will learn more about what has happened on a railroad in our area.

We will also have a mini clinic presentation during the November meeting about the now open Georgetown/Scott Co RR Museum. It will be interesting to hear about their developments and plans, and what expectations they might have for us.

—Larry Smith ([larry.ksmith@yahoo.com](mailto:larry.ksmith@yahoo.com))





For the NMRA MC Region officers link to [www.midcentral-region-nmra.org/bod2.html](http://www.midcentral-region-nmra.org/bod2.html)

*The Lantern* is a monthly (except July) publication of Division 10, Mid Central Region (MCR), National Model Railroad Association (NMRA). All opinions expressed herein are those of the authors, and do not necessarily reflect those of Division 10, the MCR, the NMRA, or anyone else.

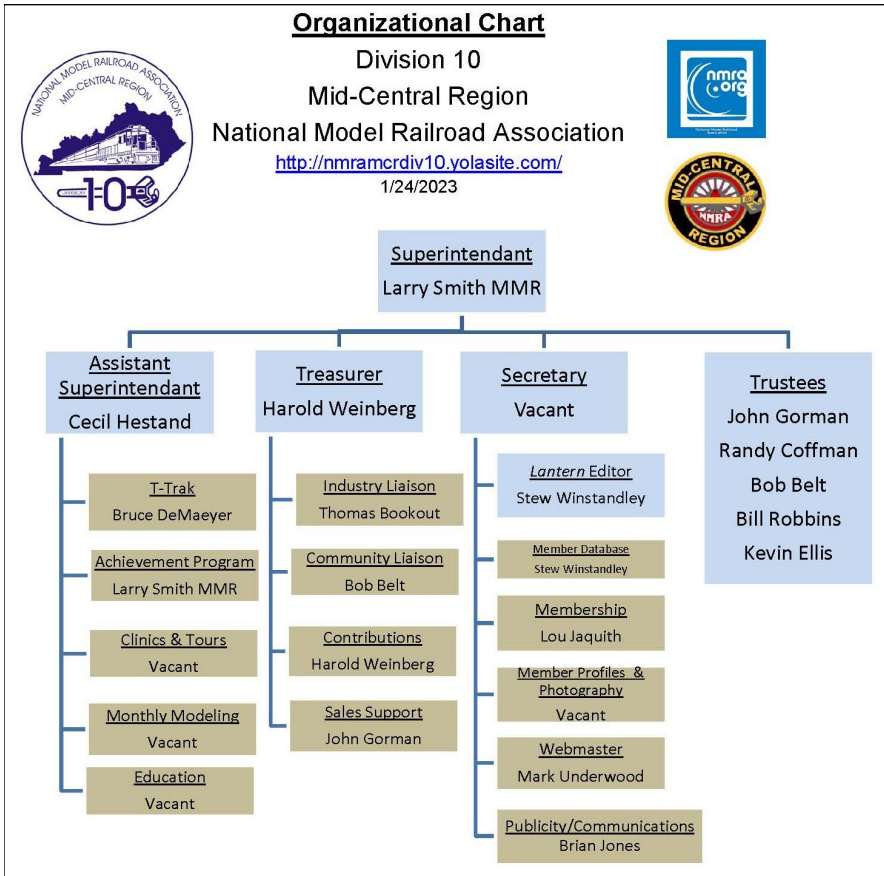
## In Recognition...

Many thanks to folks listed in the column below. They have given their support for our club. We encourage all NMRA members to help with financial support to *The Lantern* and our website and the Division 10's activities. **Send your monetary contribution to our Treasurer.**

To be listed here your contribution needs to be at least \$20 in cash, or material valued at \$50, or a total of 20 hours time within the last year. Division 10 receives NO monetary support from the NMRA or the MidCentral Region. Div.10 is recognized by the US government as a 501c3 corporation and your cash or material donations may be tax deductible.

Report materials or time to Stew Winstandley. To the right of each contributing member's name is the month of his or her latest contribution. Whenever one makes a contribution of money, material, or time, his or her date will be updated, and for new contributors, their name will be added. Anyone making a contribution will be listed below for 12 months.

Harold Weinberg	10/23
Bill Parker	10/23
Larry Smith	10/23
Lou Jaquith	10/23
Randy Coffman	1/2023



### Division 10's advertising policy:

A. COMMERCIAL AD RATES 1. Newsletter • \$10/month for business card • \$15/month for 1/8 page or less • \$25/month for 1/4 page • \$45/month for 1/2 page • \$80/month for full page • Multiple separate ads can be aggregated together for the above price structure. 2. Web site: No commercial ads allowed.

- Website addresses are: 1) above at top of Organization Chart, 2) <https://www.facebook.com/NMRA.MCR.Div10/> and 3) <http://ttrak.wikidot.com/nmra-mcr-division-10-the-kentucky-division> 4) YouTube.com search: Division 10 Mid Central Region NMRA, Past Div. 10 clinics are available on YouTube.

**Division 10 Treasurer:** Give or send your contribution to Harold Weinberg, 8 Lansdowne Estates, Lexington, KY 40502-3322.

Division 10 member Tom Bensberg, has been adding scenery to his N scale layout. The photo to the right shows two of the industries, and below are locomotives, left to right, a SD70ACe and a SD23T4. His DCC layout is now operated using JMRI Decoder Pro's server and throttle.



## Trip Report behind N&W #611 4-8-4 by Thomas Bookout

Recently the president of the Buckingham Branch Railroad graciously extended an invitation to my longtime friend Matt Schwerin, for he and a few guests to ride a VIP trip behind the famed N&W 611 on September 29. This trip was a test run for the Shenandoah Valley Limited excursions scheduled for October. Matt is a vice president at Regional-Rail, a short line group based in Florida, the two of them were acquainted through the short line railroad business. Matt called and asked if I would be interested in joining him and his son Andrew, on the excursion, a question that did not take me long to answer.

The trip operated from a former industrial lead in Goshen, VA to the passenger station in Staunton and return. The route is the former C&O North Mountain Subdivision, now owned by the Commonwealth of Virginia and operated by the Buckingham Branch Railroad. The railroad is jointed rail, of heavy construction and is well-maintained. Amtrak's Cardinal, also uses this route so it is no stranger to passenger trains. One of the great benefits of a trip operated by the host railroad was that vestibules were permitted to be opened, which is typically not permitted by Amtrak or most Class One host railroads.

Upon arrival in Goshen we looked at the locomotive and the passenger cars, which were a mixture of privately owned cars. While looking at the equipment we ran into Steve Powell, the president of the Buckingham Branch Railroad. Matt introduced us to Mr. Powell and all three of us were able to personally thank him for the invitation. Mr. Powell also indicated that we were welcome to board and start out in any of the last three premium cars of the train, set aside for fellow railroaders. The last three cars were Southern Railway sleeper-lounge Crescent Harbor, an ATSF dome built in 1948 for the Super Chief and a former Illinois Central round end observation car. We boarded in time to snag seats in the dome.

The N&W Class J 4-8-4 #611 pulled the eastbound run from Goshen to Staunton. A pair of Buckingham Branch Railroad diesels were coupled to the rear to pull us back to Goshen. This is the normal operation of the excursions since turning facilities for the big Class J do not exist at each end. A small issue occurred when a Head End Power (HEP) cable on one of the cars pulled out of its socket on a curve, but that was quickly remedied. The HEP cable issue delayed us slightly, so when we pulled into the Goshen siding Amtrak's eastbound Cardinal, was sitting there waiting for us to clear the mainline. This was the first time that I recall being on a steam excursion and meeting an Amtrak train that was waiting for us to get out of their way! The trip was fantastic. Excellent scenery, friendly railroad, nice equipment, and hopefully a bright future for more trips. Many thanks to Matt, Steve, and the Buckingham Branch Railroad for the opportunity to ride this trip.



The photo to the left was taken by Thomas during his excursion in Virginia. The N&W #611 was one of 14 Class Js built in Roanoke, VA

(600-613). 611 was first put into service in 1950, and the Js were retired by 1959. No. 611 is the sole survivor, and it has been restored twice. The photo to the right above shows Thomas' Class J HO model running on Grider's layout in Wilmore in December 2009. These popular locomotive models have been available in all scales, most by Lionel and Bachmann, plus four other companies.

# THE LANTERN

NEWSLETTER FOR NMRA MCR DIVISION 10

210 BRANNON RD.  
NICHOLASVILLE, KY 40356-9711  
nmramcrdiv10.yolasite.com

**NOVEMBER 5, 2 PM**

**TATES CREEK LIBRARY,  
3628 WALDON DR. AND  
VIA ZOOM**

**SHORT  
PRESENTATION**

SCOTT COUNTY RR MUSEUM,  
MIKE GILLISPIE

**MEETING AGENDA**

ARDUINOS, BY JOHN GORMAN

**TOURS**

BILL PARKER'S O SCALE,  
Nov. 19, 2-4

Division 10's October tour was at Harold Weinberg's. His layouts are an O scale, N scale, and an O scale switching module. In the photo to the right, from left to right, are Bruce DeMae- yer, Clay Faulconer, Lar- ry Smith, Har- old, and Bob Belt next to the O scale layout. Photo taken by Stew Winstand- ley.



## AROUND THE BEND

MON.	DAY	HOST	PLACE	EVENT / PROGRAM	TOURS	Short Clinics
Nov.	5	Div. 10	Zoom and in person	Arduinos, Reasons to Use One, John Gorman	Sunday, Nov. 19th 2-4, Bill Parker, 146 Penmoken Park, 40503	Scott County Railroad Museum, Mike Gillispie
Nov.	11	Div. 8	3938 Poplar Level Road, Louisville 40213	Train Show and Sale, 10-3, Saffin Center	Operating Layouts	www.div8-mcr-nmra.org
Dec.	3	Div.10	Zoom and in person	Building an A-frame Turntable, Rich Murphy		Electrical AP, Mark Underwood
Jan.	7	Div. 10	Zoom and in person	History of TTI's Paris Yard, Charles Bogart		
Feb.	4	Div. 10	Zoom and in person			Two Mini Clinics

<https://zoom.us/download> - The web browser client for Zoom meetings will download automatically when you start or join your first Zoom meeting. Whether you are doing a Zoom for the first time or have done it before, use the link (web address) that will be emailed to you the first week of November for the meeting.