



# THE LANTERN



---

DECEMBER 2023 VOLUME 25 ISSUE 12

---

## From the Superintendent

We have had the last mowing of the lawn and put the water heater on the birdbath for the birds. It is time to work on the layout more. From my last operating session I have many items, that need to be completed before the next session, on my layout that will keep me busy for awhile. I have signed up to run trains at Southern Lights at the Horse Park, and there is Christmas shopping for the wife. If you need modeling help, many members are available to help and provide assistance.

We no longer have a vacancy of Secretary. Tom O'Connor has volunteered to fill this position for the remainder of the term. Org Chart on page 2.

October's meeting's clinic was about the use of Arduino processors controlling model railroad functions. I emailed all the members November 6th about a hands-on Arduino class. Final details have not yet been set. We do have nine members that are interested. If you would like to participate, but have not notified me, my email address is [larry.ksmith@yahoo.com](mailto:larry.ksmith@yahoo.com). An Arduino application discussion is on page 3.

Our next Division 10 meeting will be on December 3rd, Sunday, at 2 PM. The location is NEW at the Eastside branch library in the conference room on the second floor. Eastside library is located on Blake James Drive, at the northwest corner of Palumbo and Man o' War. It will be hybrid, both Zoom and in person. We look forward to your attending, either on Zoom or in person. The clinic will be by Rich Murphy presenting scratchbuilding the K & R Standisz Co., one of the structures on his

layout. Rich always does a good job and he will show you how it was accomplished. Also Mark Underwood will do a mini clinic on the Electrical AP. This is an AP that can be easier to obtain if you plan for it during layout construction.

Our January 7th meeting will have Charles Borgia presenting on the TTI yard. TTI was a railroad coal hauler between Paris and the Ohio River for CSX, but the decline of coal traffic and a washout has brought changes. Charles will tell us about TTI and what its future may be. For February 4th, we will have two of our members present a clinic on decaling. Stew Winstandley will present on decaling locomotives, and Rich Murphy will do decaling on structures. Both have decaling experience and will show you tips and examples.

I went to Bill Parker's layout tour along with a number of Division 10 members. Thanks to the members that came, supporting division activities. Everyone enjoyed themselves, including some of Bill's friends and neighbors. It was especially nice to see the young children get excited when seeing the layout. Lou Jaquith and I commented on all the 1950s and 60s cars that are on the layout. That brought back some memories. Lou pointed out a turbine car that was made but never mass produced. The layout is filled with detail. Bill has recently put a lot of work into it. I wish more members would have attended to see Bill's extensive work.

Continued on page 3



For the NMRA MC Region officers link to [www.midcentral-region-nmra.org/bod2.html](http://www.midcentral-region-nmra.org/bod2.html)

*The Lantern* is a monthly (except July) publication of Division 10, Mid Central Region (MCR), National Model Railroad Association (NMRA). All opinions expressed herein are those of the authors, and do not necessarily reflect those of Division 10, the MCR, the NMRA, or anyone else.

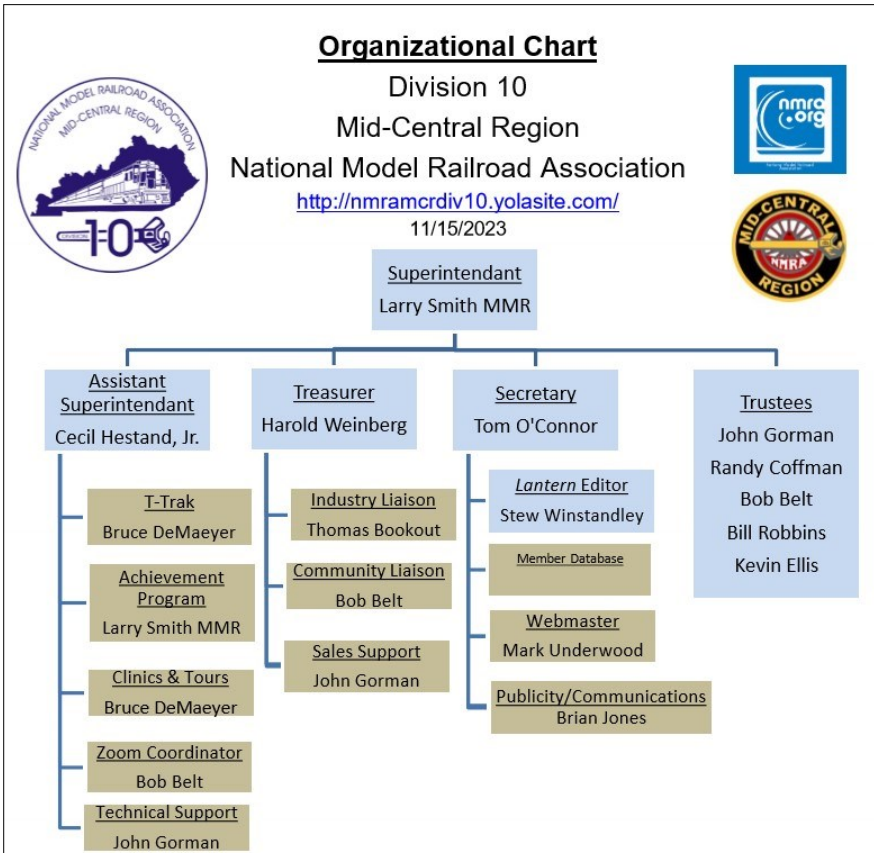
## In Recognition...

Many thanks to folks listed in the column below. They have given their support for our club. We encourage all NMRA members to help with financial support to *The Lantern* and our website and the Division 10's activities. **Send your monetary contribution to our Treasurer.**

To be listed here your contribution needs to be at least \$20 in cash, or material valued at \$50, or a total of 20 hours time within the last year. Division 10 receives NO monetary support from the NMRA or the MidCentral Region. Div.10 is recognized by the US government as a 501c3 corporation and your cash or material donations may be tax deductible.

Report materials or time to Stew Winstandley. To the right of each contributing member's name is the month of his or her latest contribution. Whenever one makes a contribution of money, material, or time, his or her date will be updated, and for new contributors, their name will be added. Anyone making a contribution will be listed below for 12 months.

Harold Weinberg	10/23
Bill Parker	10/23
Larry Smith	10/23
Lou Jaquith	10/23
Randy Coffman	1/2023



### Division 10's advertising policy:

A. COMMERCIAL AD RATES 1. Newsletter • \$10/month for business card • \$15/month for 1/8 page or less • \$25/month for 1/4 page • \$45/month for 1/2 page • \$80/month for full page • Multiple separate ads can be aggregated together for the above price structure. 2. Web site: No commercial ads allowed.

- Website addresses are: 1) above at top of Organization Chart, 2) <https://www.facebook.com/NMRA.MCR.Div10/> and 3) <http://ttrak.wikidot.com/nmra-mcr-division-10-the-kentucky-division> 4) YouTube.com search: Division 10 Mid Central Region NMRA, Past Div. 10 clinics are available on YouTube.

**Division 10 Treasurer:** Give or send your contribution to Harold Weinberg, 8 Lansdowne Estates, Lexington, KY 40502-3322.

Photo below is an example of Bill Parker's detailed interiors, this one in his station structure.



As well as meetings, we have some upcoming division activities. Our T-Trak will be at the VA Hospital on Leestown Road Saturday, December 9th, from 9 AM to noon, and we may have a layout tour sometime in the next few months.

Clay Faulconer has a 4' x 8' N scale layout on legs that he would like to see in a good home. Price is reasonable. If you are ready for a layout, here's your chance to get a ready to run N scale layout. It has some scenery, but no rolling stock. Clay's email is: clayboy43@gmail.com.

Here's wishing you the best of a Holiday season and a happy new year. Get Santa to bring you lots of model railroad equipment. I hope the New Year is good for all of us. —Larry Smith

## Here's a [bard.google.com](https://bard.google.com) response to a question about Arduino applications:

Arduino model railroad apps are software applications that allow you to control your model railroad layout using an Arduino microcontroller board. These apps can be used to control locomotives, turnouts, signals, and other accessories. They can also be used to automate your layout, such as by running trains on a schedule or stopping trains when they enter occupied blocks. There are several different Arduino model railroad apps available, each with its own features and capabilities. Some of the most popular apps include:

**Android App DCC Controller via Bluetooth and Arduino:** This app is a simple and easy-to-use way to control your model railroad layout using an Arduino Nano or Uno board. It can be used to control locomotives, turnouts, and signals.

**ArduinoRailwayControl:** This app is a more advanced Arduino model railroad app that offers a wider range of features. It can be used to control locomotives, turnouts, signals, lights, and crossing mechanisms. It also supports automation and can be used to run trains on a schedule or stop trains when they enter occupied blocks.

**Model Railroading with Arduino:** <https://mrrwa.org> This is a website that provides a wealth of information on how to use Arduino microcontrollers to control your model railroad layout. It includes tutorials, projects, and code examples.

In addition to these dedicated Arduino model railroad apps, there are also a number of general-purpose Arduino apps that can be used to control your layout. These apps typically provide a more basic level of control, but they can still be useful for controlling layouts or for performing specific tasks, such as turning on and off lights. Arduino model railroad apps can be customized to your specific needs. You can create custom layouts and scenes, and you can also add custom sounds and effects. Programming languages such as Arduino C++ are available for creating the perfect model railroad experience. Arduino C++ is based on C++, but it has a number of special features that make it easier to use for beginners. For example, the Arduino programming language does not require you to use pointers or memory management, and it has a number of pre-written functions that make it easy to interact with sensors and other devices.

# THE LANTERN

NEWSLETTER FOR NMRA MCR DIVISION 10

210 BRANNON RD.  
NICHOLASVILLE, KY 40356-9711  
nmramcrdiv10.yolasite.com

DECEMBER 3, 2 PM

EASTSIDE BRANCH  
LIBRARY, 3000 BLAKE  
JAMES DR. AND VIA ZOOM

SHORT  
PRESENTATION

ELECTRICAL AP, MARK  
UNDERWOOD; CONVENTION  
REPORT, JERRY KRUGER

MEETING AGENDA

THE S&R STANISZ BUILDING,  
RICH MURPHY

TOURS

NONE



Bill Parker opened his garage for a tour of his O sale layout on November 19th. For some of his many scratch built structures and rolling stock, Bill has shown their development on displays

## AROUND THE BEND

MON.	DAY	HOST	PLACE	EVENT / PROGRAM	TOURS	Short Clinics
Dec.	3	Div. 10	Zoom and in person at Eastside Branch	Scratchbuilding the S&R Stanisz Building, Rich Murphy	Dec. 9, 9-noon, Div. 10 T-Trak layout, VA on Leestown Rd.	Electrical AP, Mark Underwood; Convention Report, Jerry Krueger
Jan.	7	Div. 10	Zoom and in person at Eastside Branch	History of TTI's Paris Yard, Charles Bogart		
Feb.	4	Div. 10	Zoom and in person	Two Mini Clinics on Decaling Locomotives and Buildings		Steam Heritage Update
March	3	Div. 10	Zoom and in person	Streetscapes, Andy Blenko		
April	7	Div. 10	Zoom and in person	How a Steam Engine Works, Randy Coffman		

<https://zoom.us/download> - The web browser client for Zoom meetings will download automatically when you start or join your first Zoom meeting. Whether you are doing a Zoom for the first time or have done it before, use the link (web address) that will be emailed to you the first of December for the meeting.