



THE LANTERN



APRIL 2024 VOLUME 26 ISSUE 4

From the Superintendent

The warmer weather will soon stay for awhile. I know I have some work to do in the yard but I am also going to work on my layout. I need more details and to work on that detection system again.

The next meeting will be in person April 7 at Eastside library in the small conference room on the second floor at the usual 2 PM. The presenter will be our own John Gorman who will tell us about additional uses of Arduinos on layouts. This clinic is a change from what was scheduled.

At the meeting on May 5, Rich Murphy, another one of our members, will give a presentation on “A Water Clinic”. We will see what scenery effects involving water that Rich now has on his layout, and his experience in adding water. Rich has said he will have a layout tour sometime later this spring or summer and a lot of us are looking forward to seeing his great layout in person. Our meetings will be hybrid, so please attend either in person or on Zoom.

Another upcoming event is the Trains Day at the Library, which will be held in Anderson County. The library is in Lawrenceburg on Main Street. The address is 114 North Main Street, so use your GPS and come over that day and visit with fellow members. A number of members have volunteered to run the layouts and interact with the public. The date is April 20 from 10 AM to 3 PM.

I did some railfanning last week. I went to Rail Camp in northern Indiana to visit with some friends. Rail Camp is a group of older guys who like to take pictures of trains and talk about them. Their knowledge of train history is impressive. It

was a fun time but cold. I did get a tour of the new track work the South Shore line is doing in the Michigan City Indiana area. It is a gigantic project for commuter rail, and it appears the area may need it since traffic was heavy in the middle of the day. (See page 3 for information about the line).

In this newsletter on page 4, our Assistant Superintendent, Cecil Hestand presents an opportunity for us to get together in a social setting. Please read about the future plans, and make an effort to participate. I read all the time in other divisions' newsletters about their successful outings, picnic or get-together, and I wonder why we can't do that also.

I think our class for members who were interested in Arduinos was a success and a value to many members. I think we should do similar type classes on other subjects that would be useful and be of value to a lot of members. What subjects should we have a small, informal class on? Who will lead the presentations? I can think of some but do not know for sure. What do members want? If you have a suggestion, please pass it on to me. If you would like to present such a class please also tell me and we can work it out. We have lots of knowledge in our division that should be shared with others.

Take care and do make an effort to be more active in Division 10 and in model railroading.

—Larry Smith



For the NMRA MC Region officers link to www.midcentral-region-nmra.org/bod2.html

The Lantern is a monthly (except July) publication of Division 10, Mid Central Region (MCR), National Model Railroad Association (NMRA). All opinions expressed herein are those of the authors, and do not necessarily reflect those of Division 10, the MCR, the NMRA, or anyone else.

In Recognition...

Many thanks to folks listed in the column below. They have given their support for our club. We encourage all NMRA members to help with financial support to *The Lantern* and our website and the Division 10's activities. **Send your monetary contribution to our Treasurer.**

To be listed here your contribution needs to be at least \$20 in cash, or material valued at \$50, or a total of 20 hours time within the last year. Division 10 receives NO monetary support from the NMRA or the MidCentral Region. Div.10 is recognized by the US government as a 501c3 corporation and your cash or material donations may be tax deductible.

Report materials or time to Stew Winstandley. To the right of each contributing member's name is the month of his or her latest contribution. Whenever one makes a contribution of money, material, or time, his or her date will be updated, and for new contributors, their name will be added. Anyone making a contribution will be listed below for 12 months.

Harold Weinberg	10/23
Bill Parker	10/23
Larry Smith	10/23
Lou Jaquith	10/23



Referencing Larry's mentioning of the South Shore Line, a search for models turned up the above Lionel cars, which are ones previous to the newer cars seen in the photo on page 3. Atlas has released a HO GP38-2 of South Shore Freight #2001.

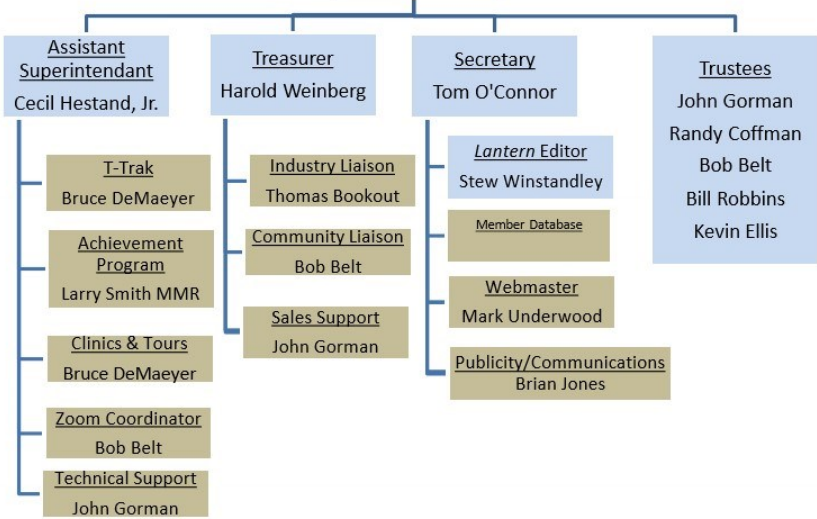


Organizational Chart

Division 10
Mid-Central Region
National Model Railroad Association
<http://nmramcrdiv10.yolasite.com/>
11/15/2023



Superintendent
Larry Smith MMR



Division 10's advertising policy:

A. COMMERCIAL AD RATES 1. Newsletter • \$10/month for business card • \$15/month for 1/8 page or less • \$25/month for 1/4 page • \$45/month for 1/2 page • \$80/month for full page • Multiple separate ads can be aggregated together for the above price structure. . Web site: No commercial ads allowed.

- Website addresses are: 1) above at top of Organization Chart,
 2) <https://www.facebook.com/NMRA.MCR.Div10/> and
 3) <http://ttrak.wikidot.com/nmra-mcr-division-10-the-kentucky-division>
 4) YouTube.com search: Division 10 Mid Central Region NMRA, Past Div. 10 clinics are available on YouTube.

Division 10 Treasurer: Give or send your contribution to Harold Weinberg, 8 Lansdowne Estates, Lexington, KY 40502-3322.

Chicago, South Shore and South Bend Railroad and the South Shore Line

The Chicago South Shore and South Bend Railroad ([CSS](#)) is a Class III short line railroad that operates in the Chicago and northwest Indiana region. Simply known as South Shore Freight, it's owned by [Anacostia Rail Holdings](#). Of the 127 miles of standard-gauge track used by the CSS, 75 miles serves as trackage rights on the non-affiliated South Shore Line commuter system between South Bend, Ind., and Chicago.

South Shore Freight shares the majority of the line with Northern Indiana Commuter Transportation District, a commuter authority created in 1977 by the State of Indiana to operate the South Shore Line passenger service. An approximate 45 commuter trains operate on the weekdays, yet both the freight and passenger businesses maintain a strong partnership resulting in an efficient operation. While dispatching falls under the commuter authority, both railroads' operating staffs meet weekly, and South Shore Freight participates in interviewing dispatcher candidates.

A 26-mile, \$378 million Double Track Project, adding a second main between Gary and Michigan City, is projected to cut travel times between Michigan City and downtown Chicago from 1 hour, 40 minutes to 1 hour, 7 minutes; South Shore plans to take advantage of the additional capacity with 14 more weekday trains.

The above was copied from a search of *Trains Magazine*. In a search for modeling of the South Shore the following was found. "Often known simply as the South Shore Line, this interurban railroad operated freight and passenger service from Chicago, IL to South Bend, IN. Having operated both electric and diesel freight operations over the years, this railroad is a favorite of modelers in a large part due to its unusual and varied locomotive roster which ranged from the famous "Little Joe" electric behemoths to more mundane GP7s borrowed from the C&O."

On page 1 Larry mentioned the new track work in Michigan City which is part of the double tracking described above. The photos below are from railpictures.net. The one to the left shows a South Shore Line commuter train on the street running that used to exist in Michigan City. The photo to the right is of a CSS freight on the new track in Michigan City, that replaced the street running. A model of an older car is on page 2.



THE LANTERN

NEWSLETTER FOR NMRA MCR DIVISION 10

210 BRANNON RD.
NICHOLASVILLE, KY 40356-9711
nmramcrdiv10.yolasite.com

APRIL 7, 2 PM

EASTSIDE BRANCH
LIBRARY. OFF OF PALUMBO
AT MAN O' WAR, AND VIA
ZOOM

SHORT
PRESENTATION

NONE

MEETING AGENDA

OTHER ARDUINOS USES,
JOHN GORMAN

TOURS

NONE

Division 10's 25th anniversary

The following was written by then Superintendent Fred Plymale, and in the first issue of *The Lantern*, November 1999. "After many years as a "fallen flag" Division 10 is back on track and is approaching the millennium with a full head of steam and a green block. Our first meeting had a good turnout of members, a great program, and two excellent layout tours."

To celebrate the 25 years, Cecil Hestand is planning to have a luncheon or a dinner, probably the last weekend of September. You will receive an email in a few months with more details about the event. When you get the email, then reply to let Cecil know if you will attend.



AROUND THE BEND

MON.	DAY	HOST	PLACE	EVENT / PROGRAM	TOURS	Short Clinics
April	7	Div. 10	Zoom and in person at Eastside Branch	Other Arduinos Uses, John Gorman	None	
April	20 (sat.)	Div. 10	Anderson County Library, Downtown Lawrenceburg	Trains Day at the Library, 10-3	T-Trak and other scale layouts	
May	5	Div. 10	Zoom and in person at Eastside Branch	A Water Clinic, Rich Murphy		
May	16-19	Div. 4 MCR	Crowne Plaza Hotel, Middleburg Heights, Ohio 44130	MCR Regional Convention, North Coast Limited, NorthCoastLimited2024.org		
June	2	Div. 10	Zoom and in person at Eastside Branch	Steel Mills, Bob Frankrone		

<https://zoom.us/download> - The web browser client for Zoom meetings will download automatically when you start or join your first Zoom meeting. Whether you are doing a Zoom for the first time or have done it before, use the link (web address) that will be emailed to you the fifth of April for the meeting.