



THE LANTERN



JUNE 2025 VOLUME 27 ISSUE 6

Superintendent's Report

I just returned from the MCR Regional Convention in Dublin, Ohio and it was an enjoyable time as usual. I went to some clinics, looked at the items for sale, and made new friends and renewed other friendships, and did some evaluation of models and modules. In fact, as I was enjoying the conversation of some fellow model railroaders, I missed a clinic. I also learned some modeling ideas while talking to other members. A few members are really getting into electronics. One of the highlights of the convention was seeing Bob Belt introduced as a new MMR and presented with a plaque and other credentials. The current MMRs were in a line and shook the hand of the new MMRs. Ray Persing, head of the National AP program, who gave us our last clinic, did a great job of presenting the MMR ceremony. Congratulations to Bob! Also Bob's freight car won first place in the model contest (photo on page 2). Another person I should mention was Bruce DeMaeyer who did an excellent job at the convention organizing and executing the T-TRAK layout (photo on page 4). A number of persons said it was one of the best T-TRAK layouts to date. We have some very good modelers in our region who have made great T-TRAK modules.

April's Trains Day at the Library was a great success. We had 104 Junior Engineers and 340 overall in attendance. I would like to thank those who came out and helped make it a success and they are, in no particular order: Clay Faulconer, Rick Long, Randy Coffman, Jeff Hedge, Bruce DeMaeyer, Brian Jones, Tom Bensberg, Frank Stevenson, Charles Bogart, Cecil Hestand, Bob Belt, Ralph Haddock, Jim Wil-

liams, Stew Winstandley, Roger Merritt, Kevin Ellis, Tom O'Connor, and John Gorman. I would also like to give a shout out to Frank for bringing the pizza. Thanks again!

For the next meeting on June 1, there has been a change in the clinic. I will be presenting a clinic on making trees. I will show you how I make the trees on my layout. I say how I do it, since in modeling, there is frequently more than one way to do something. NOTE: The June 1 meeting will be Zoom ONLY. June tours are listed on page 4. The June meeting will be the last clinic meeting until September. We do not have a meeting or newsletter in July. In August we have a treat for you, John Bowling is opening his well detailed and outstanding layout for us to enjoy. Plan to go see it on Sunday August 3, from noon to 5 PM at 406 N Maple Avenue, Danville. Besides having a great layout, John is one of the best hosts.

We will resume our hybrid meetings in September when Rich Murphy will present on scenery. We have presenters for October and November, Harold and Pat, but we have openings for future months so please consider what you can do for the division. We also need some layout tours, so tell me if you are available and willing.

An upcoming event is the summer train show organized by the Bluegrass RR Club at the Shriner's Temple on Southland Drive on July 12 and 13. Besides our T-TRAK layout, there will be Lionel, HO, and another N scale layout. Vendors will be selling those things you cannot do without. Bring the kids with you. —Larry Smith MMR



For the NMRA MC Region officers link to www.midcentral-region-nmra.org/bod2.html

The Lantern is a monthly (except July) publication of Division 10, Mid Central Region (MCR), National Model Railroad Association (NMRA). All opinions expressed herein are those of the authors, and do not necessarily reflect those of Division 10, the MCR, the NMRA, or anyone else.

In Recognition...

Many thanks to folks listed in the column below. They have given their support for our club. We encourage all NMRA members to help with financial support to *The Lantern* and our website and the Division 10's activities. **Send your monetary contribution to our Treasurer.**

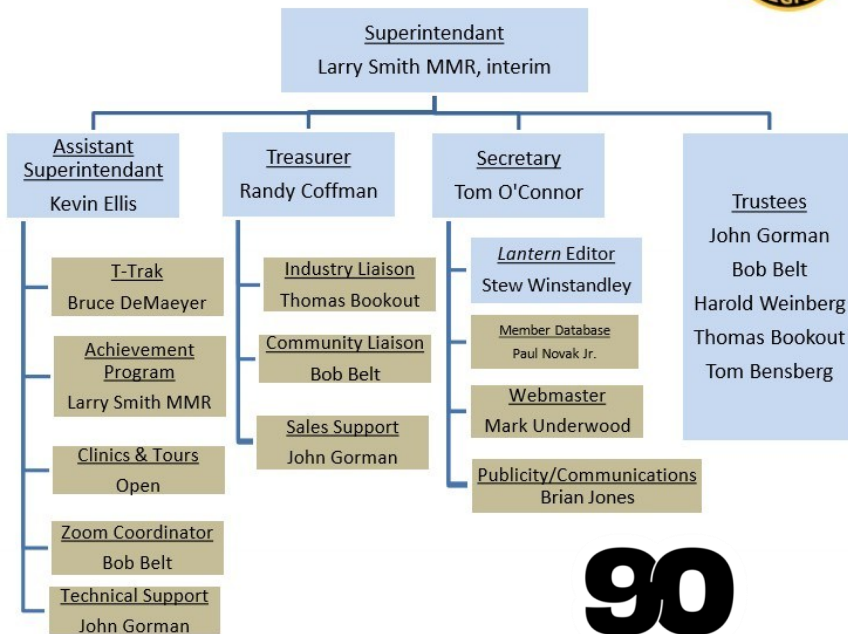
To be listed here your contribution needs to be at least \$20 in cash, or material valued at \$50, or a total of 20 hours time within the last year. Division 10 receives NO monetary support from the NMRA or the MidCentral Region. Div.10 is recognized by the US government as a 501c3 corporation and your cash or material donations may be tax deductible.

Report materials or time to Stew Winstandley. To the right of each contributing member's name is the month of his or her latest contribution. Whenever one makes a contribution of money, material, or time, his or her date will be updated, and for new contributors, their name will be added. Anyone making a contribution will be listed below for 12 months.

Harold Weinberg	1/2025
Lou Jaquith	11/24
Bob Belt	8/2024
Cecil Hestand, Jr.	7/2024
Larry Smith	7/2024
Randy Coffman	6/2024

Organizational Chart Division 10 Mid-Central Region National Model Railroad Association

<http://nmramcrdiv10.yolasite.com/>
1/20/2025



Master Model Railroader (Copied from nmra.org). An NMRA member qualifies as a MMR when he or she has obtained at least seven of the eleven Achievement Certificates provided that he or she has earned at least one Achievement Certificate in each of the four areas of the regulations.

Division 10's advertising policy:

A. COMMERCIAL AD RATES 1. Newsletter • \$10/month for business card • \$15/month for 1/8 page or less • \$25/month for 1/4 page • \$45/month for 1/2 page • \$80/month for full



Below: Bob Belt MMR, center, with his MMR Certificate, Bruce DeMaeyer, left, with Bob's first place freight car award, and Larry Smith MMR, right, with Bob's MMR plaque. Bob received his MMR and entered his freight car at the 2025 MCR convention.



- Website** addresses are: 1) above at top of Organization Chart, 2) <https://www.facebook.com/NMRA.MCR.Div10/> and 3) <http://ttrak.wikidot.com/nmra-mcr-division-10-the-kentucky-division> 4) YouTube.com search: Division 10 Mid Central Region NMRA, Past Div.10 clinics are available on YouTube.

Contributions to Division 10 are sent to the treasurer, Randy Coffman. His address is 1500 River Circle Dr, Richmond, KY 40475-7907.

Model Locomotive Detail

The photo of the blue locomotive is of a ScaleTrains N scale Gevo model that has been decaled for the Florida East Coast. The smaller photo is of two Atlas RJC NERR locomotives. Over the years, there has been much improvement in the details included on RTR locomotives. The blue photo shows the PTC antennas, sun shades, windshield wipers, grab irons, ditch lights, coupler release lever, and cables. The red locomotives do not have the sun shades, but they were included and are now installed. In the past some or all of these items had to be added after purchase.

For connecting multiple units there are three cables on each side of the coupler and the larger 27 conductor/pins colored cable above the coupler. Wouldn't it be neat if we could attach the 27 pin cable between two DCC locomotive models so we could easily run multiple units together. Of course not, just attaching the MU cables on a prototype locomotive also requires the setting of a selector switch in each cab.

The colored cable on a prototype has 27 conductors with 27 pins. Some of the major pin functions are for throttle position, direction, dynamic braking, air brakes, sanders and alarm bell. Some pins are spares.

The other six cables (three on each side of the coupler, with duplicated functions) are for train braking and independent locomotive braking.



THE LANTERN

NEWSLETTER FOR NMRA MCR DIVISION 10

210 BRANNON RD.
NICHOLASVILLE, KY 40356-9711
nmramcrdiv10.yolasite.com

JUNE 1, 2 PM EST

ZOOM ONLINE

**SHORT
PRESENTATION**

NONE

MEETING AGENDA

MAKING TREES, LARRY SMITH

TOURS

THREE LOCATIONS ON JUNE
8TH. ADDRESSES ABOVE TO
THE RIGHT.

AS SHOWN BELOW UNDER TOURS, WE HAVE THREE AVAILABLE ON JUNE 8TH. THEY WILL BE AT TOM BENSBERG'S N SCALE, 3218 MONTAVESTA RD; KEVIN ELLIS' HO SCALE, 3109 MONTAVESTA RD; AND HAROLD WEINBERG'S O AND N SCALES, 8 LANSDOWNE ESTATES; FROM 1:30 TO 4:30. AN EMAIL WILL BE SENT PRIOR TO JUNE 8TH WITH ADDITIONAL INFORMATION.

THE PHOTO BELOW SHOWS PART OF THE T-TRAK AT THE MCR CONVENTION. BRUCE DEMAEYER IS IN THE PHOTO.



AROUND THE BEND

MON.	DAY	HOST	PLACE	EVENT / PROGRAM	TOURS	Short Clinics
June	1	Div. 10	Online Zoom only, link emailed on May 30	Making Trees, Larry Smith	Three on June 8th, Bensberg, Ellis, & Weinberg, 1:30-4:30	
July	12-13	BGRR Club	Shriner's on Southland Drive	Train Show	Division 10's T-TRAK layout	
July	15-19	National	Novi, Michigan	National NMRA Convention	Website Link below the schedule	
Aug.	3	Div. 10	Danville, KY 40422	John Bowling layout	HO, rear at 406 Maple Ave.	
Sept.	7	Div. 10		Scenery, Rich Murphy		

[2025 NMRA National Convention – Station No. VI – hosted by the North Central Region of the NMRA](#)

Use the above website link to get information about the National NMRA Convention, Novi, Michigan, July 15-19.