



THE LANTERN



SEPTEMBER 2025 VOLUME 27 ISSUE 9

Superintendent's Report

Well, the outdoor heat seems to be relaxing and there is a coolness in the air. Perhaps fall is coming. We know one thing is coming again and that is our meetings at the library. Also returning are the train shows and more chances for layout tours and perhaps even more time to work on the layout. If you have not been coming to the meetings, now is the time to come in person and meet some of your fellow members. We will continue the hybrid meetings, both Zoom and in person, but plan on coming to a meeting at the library so you can interact with the other members. And, if you wish to present, please tell me, or maybe bring something you have been working on. We would be interested in seeing it.

I do wish to thank all the members who showed up for the layout tours at Brad Lockwood's and Rich Murphy's. We saw some very good layouts with some good ideas. The two hosts appreciated having you come and getting to see and talk with you. The turnout was great, thanks to all who participated. The layout tour to John Bowling's did not have such good turnout. Only seven visitors came to see his layout. I would like to have layout tours for our members during the fall, so if you would like to host a tour please contact me.

Our next meeting will be September 7 at the Eastside Library in the medium room on the second floor at 2 PM. It will be both Zoom and in person. Rich Murphy will present "Scenery – Recreating an Old Unfinished Memory". Since you know how well Rich does scenery, I am sure it will be interesting and a learning experience.

The date of the October meeting, at the same library

will be the 5th. Harold Weinberg will present "Animating your Layout". I love to try and do animation on my layout and Harold will tell us what we can do. Pat Gristle, on November 2, will discuss scenery techniques when he built "Dioramas of Western Mining Scenes". Plan to enjoy our meetings.

Speaking of train shows, Cincinnati's Division 7 will hold their train show the weekend of October 11 & 12, 2025 at the Lakota West High School at 8940 Union Center Blvd, West Chester, OH 45069. Division 8 in Louisville will hold their train show on Saturday, November 15, at the Holy Family Center on Poplar Level Road from 10 AM to 3 PM. NMRA members will be allowed in at 9 AM at the Louisville show if you have your NMRA membership card with you.

I might also mention that one of our members, is planning a trip for members who would like to go to Cass, WV, next summer and ride the train. Another member is working on a local railfanning outing this fall for anyone who is interested. More information will be provided later.

We had a board meeting Wednesday, August 27, to discuss a possible change to the Division name as used for branding and promotional purposes. The name change was tabled and a decision was made to email members for suggestions. The email went out Thursday evening. If you haven't sent a reply for a suggestion please do so.

Enjoy the cooler weather and take care of yourselves and others.

—Larry Smith MMR



For the NMRA MC Region officers link to www.midcentral-region-nmra.org/bod2.html

The Lantern is a monthly (except July) publication of Division 10, Mid Central Region (MCR), National Model Railroad Association (NMRA). All opinions expressed herein are those of the authors, and do not necessarily reflect those of Division 10, the MCR, the NMRA, or anyone else.

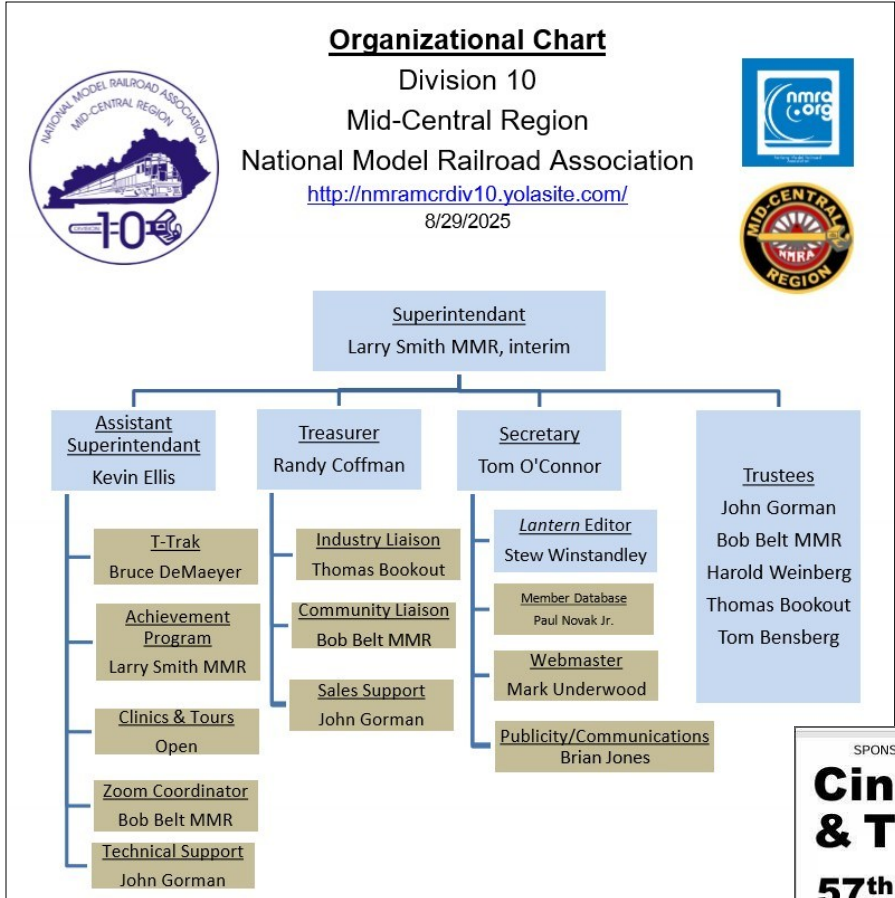
In Recognition...

Many thanks to folks listed in the column below. They have given their support for our club. We encourage all NMRA members to help with financial support to The Lantern and our website and the Division 10's activities. **Send your monetary contribution to our Treasurer.**

To be listed here your contribution needs to be at least \$20 in cash, or material valued at \$50, or a total of 20 hours time within the last year. Division 10 receives NO monetary support from the NMRA or the MidCentral Region. Div.10 is recognized by the US government as a 501c3 corporation and your cash or material donations may be tax deductible.

Report materials or time to Stew Winstandley. To the right of each contributing member's name is the month of his or her latest contribution. Whenever one makes a contribution of money, material, or time, his or her date will be updated, and for new contributors, their name will be added. Anyone making a contribution will be listed below for 12 months.

Harold Weinberg	1/2025
Lou Jaquith	11/24
Bob Belt MMR	8/2024
Cecil Hestand, Jr.	7/2024
Larry Smith MMR	7/2024



Division 10's advertising policy:

A. COMMERCIAL AD RATES 1. Newsletter • \$10/month for business card • \$15/month for 1/8 page or less • \$25/month for 1/4 page • \$45/month for 1/2 page • \$80/month for full page • Multiple separate ads can be aggregated together for the above price structure. . Web site: No commercial ads allowed.

B. MEMBER AD RATES 1. Newsletter: Member rates will be at 20% of the commercial rates Members that have a commercial business will pay the commercial

Website addresses are: 1) above at top of Organization Chart,

2) <https://www.facebook.com/NMRA.MCR.Div10/> and

3) <http://trak.wikidot.com/nmra-mcr-division-10-the-kentucky-division>

4) YouTube.com search: Division 10 Mid Central Region NMRA, Past Div.10 clinics are available on YouTube.

Contributions to Division 10 are sent to the treasurer, Randy Coffman. His address is 1500 River Circle Dr, Richmond, KY 40475-7907.

SPONSORED BY CINCINNATI DIV. 7 OF THE NATIONAL MODEL RAILROAD ASSOC

Cincinnati Model Train & Trade Show

57th Annual

Lakota West High School

Sat & Sun October 11 & 12, 2025

10 am - 4 pm both days

FREE PARKING!

- Model Trains in All Scales
- Operating Layouts & Displays
- Retail Sales – over 250 tables!
- Hourly Door Prizes
- FREE Locomotive Test Booth
- ATMs at several nearby banks

8940 Union Centre Blvd, West Chester, Ohio 45069

FUN for the Whole Family!
\$10 Admission (cash only, ATMs off-site)
 Children 12 and under and Scouts in uniform free, with paying adult – No animals allowed, except service dogs

This event will be operated under all local, state and federal health guidelines in effect at that time. Masks are currently optional. If recommended, hand sanitizer will be available at multiple locations. Subject to cancellation due to events beyond our control. See <https://cincy-div7.org/local-events> for last-minute info or changes. Sales tables are \$40 each – reserve via rhord@fuse.net

Chance to Win a Model Train Set!
 Must fill out door prize slip. One entry per paying attendee. Need not be present at drawing.

Sponsored in part by **Peter Paul OFFICE EQUIPMENT** Serving the Tri-State Area SINCE 1952

For more info see www.cincy-div7.org – For tables contact rhord@fuse.net

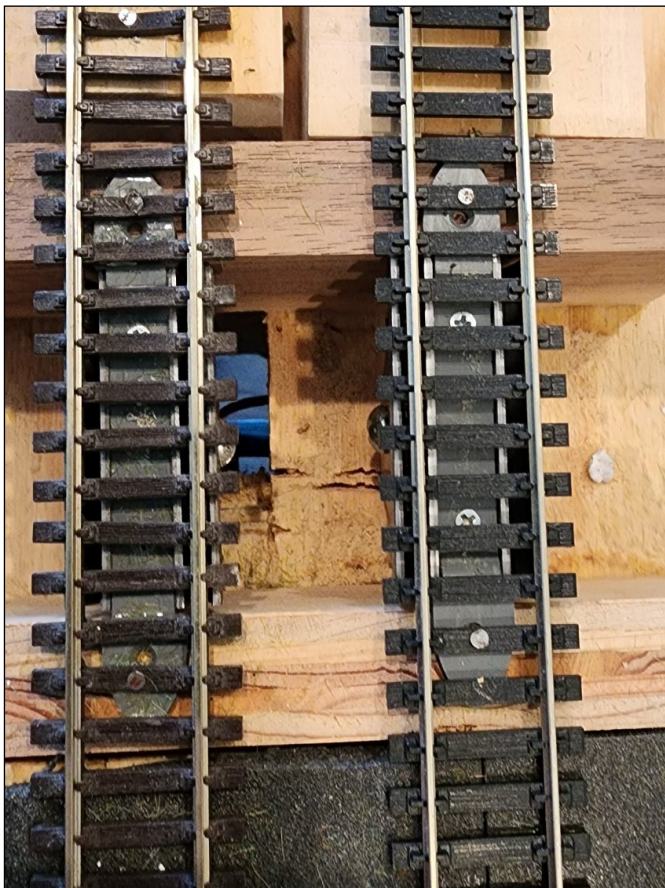
Hump Yards by Stew Winstandley with text provided by Brad Lockwood

Years ago I took a tour of the Union Pacific’s Bailey Yard in North Platte, Nebraska. Impressive! UP reports that the Bailey Yard has 17 receiving and 16 departure tracks handling 14,000 rail cars every 24 hours. 3,000 cars are sorted daily in the yard’s eastward and westward yards, nicknamed “hump” yards. Using a mound cresting 34 feet for eastbound trains and 20 feet for those heading west, the hump yards allow four cars a minute to roll gently into any of 114 “bowl” tracks.

Recently I saw a video of a model of a hump operating on a layout. I also found out that member Brad Lockwood is developing a hump yard on his layout. Those of you who visited his layout in August probably noticed the hump. Here’s what Brad wrote about it. “My plan is to use electro-magnetic uncouples (see photo bottom left). A locomotive will slowly push cars up the hump. A timer on the uncouple will be active for only a few seconds. When the couples are at the uncoupler it will be activated to allow a car to roll down the hump. I’m working on creating a retarder to slow down the cars. One idea is to use compressed air, or by using some tall static grass to create drag. I also plan to have a switch panel for throwing turnouts/switches for routing the cars onto the bowl tracks. Operational implementation is up to six months away.”

Operational implementation is up to six months away.” Pictured below to the right, the top photo shows the hump with the yard’s tracks below. The bottom right photo is a shot from the side of the hump. I don’t think the scale height is as high as the UP humps mentioned above, but the length of the receiving

tracks is a factor.



THE LANTERN

NEWSLETTER FOR NMRA MCR DIVISION 10

210 BRANNON RD.
NICHOLASVILLE, KY 40356-9711
nmramcrdiv10.yolasite.com

SEPT. 7, 2PM

EASTSIDE LIBRARY, 3000
BLAKE JAMES DR.,
LEXINGTON 40509 AND
ONLINE VIA ZOOM

SHORT
PRESENTATION

NONE

MEETING AGENDA

SCENERY, CREATING AN OLD
UNFINISHED MEMORY, RICH
MURPHY

TOURS

NONE



RICH MURPHY, WHO HOSTED ONE OF THE LAYOUT TOURS IN AUGUST, HAS BEEN WORKING ON BUILDINGS PLACEMENT ON HIS LAYOUT. ONE OF HIS LOCATIONS IS SHOWN IN THE ABOVE PHOTO. RICH WILL BE TALKING ABOUT HIS SCENERY DURING THE SEPTEMBER 7TH MEETING.

AROUND THE BEND

MON.	DAY	HOST	PLACE	EVENT / PROGRAM	TOURS	Short Clinics
Sept.	7	Div. 10	Eastside Library and via Zoom	Scenery, Recreating an old unfinished memory, Rich Murphy	None	
Oct..	5	Div. 10	Eastside Library and via Zoom	Animating Your Layout, Harold Weinberg		
Oct.	11—12	Div.7	West Chester, Ohio	Model Train and Trade Show, 10 to 4, see flyer on page 3,		
Nov..	2	Div. 10	Eastside Library and via Zoom	Dioramas of Western Mining Scenes, Pat Gerstle	none	
Nov.	15	Div. 8	Louisville	Train Show and Sale, 10-3		

A link for Zoom access will be emailed near the end of the week before the meeting.