



THE LANTERN



OCTOBER 2025 VOLUME 27 ISSUE 10

Superintendent's Report

As I sit here writing my report for *The Lantern*, I notice the table that I use to make or fix things on the layout. On it is a pile of tools, unfinished painted figures and cars, wire spools, and various assorted parts. When I need something I have to dig through the pile to find it. I have a number of projects to do which are in various stages of incompleteness. I get so far and then I'm not sure what to do next. I will try to complete them since I want the results. Maybe this winter I will have more time. And then there is my "to do" list of things I have not even started! I imagine some of you all are like me. You need to get things done and you enjoy working on the model railroad. Best of luck and hopefully you will accomplish a lot.

Our next meeting will be October 5 on the second floor of the Eastside library at 2 PM. Harold Weinberg will present "Animating the Cleveland & Moweaqua RR". I really like animation on a layout and I will be looking forward to Harold's presentation. The meeting after that is on November 2, same place and time. Pat Gerstle will tell us about his "Dioramas of Western Mining Scenes" and how he made them. Pat had a very nice narrow gauge layout with great scenery and I am sure he will show us how it can be done. On December 7, Cecil Hestand will talk to us about "Track Cleaning". It is one layout activity which needs to be done as quickly and easily as possible.

I loved the attendance we had at the last meeting in the library. It was like pre-covid times when we use to fill the room. I, and others, went out for extra chairs at least three times. I hope attendance contin-

ues. Another of our pre-covid activities that may return is Bring and Brag. A couple members are planning to bring it back, which is great. I enjoyed listening to a member's talk about what they had made and how they made it. It was a learning experience. When it starts, I hope everyone will bring something to share. I am including myself since I will also help support the return of Bring and Brag.

Since we had some new and some never seen before members attend the last meeting, I mentioned to everyone about groups.io for Division 10, which we have at present, and that I hoped nonparticipating members would join. To join you must contact me, and then you can put the Division 10 groups.io in the email send address. Your message will be emailed to the 38 members of the division whom are already in our groups.io. Messages written by other members will appear in your email input. You can use group.io to ask questions, modeling or otherwise, or give interesting information to the group and then maybe receive comments or additional information. It is a good way to communicate with the other members. I sent out 16 invitations and 5 members responded positively.

Remember, Division 8 in Louisville is having their train show November 15 from 10 to 3 PM at Holy Family, 3938 Poplar Level Road. And NMRA members with their card can get in between 9 and 10 AM and look for the bargains.

Enjoy the fall weather and all the activities and be safe.

—Larry Smith MMR



For the NMRA MC Region officers link to www.midcentral-region-nmra.org/bod2.html

The Lantern is a monthly (except July) publication of Division 10, Mid Central Region (MCR), National Model Railroad Association (NMRA). All opinions expressed herein are those of the authors, and do not necessarily reflect those of Division 10, the MCR, the NMRA, or anyone else.

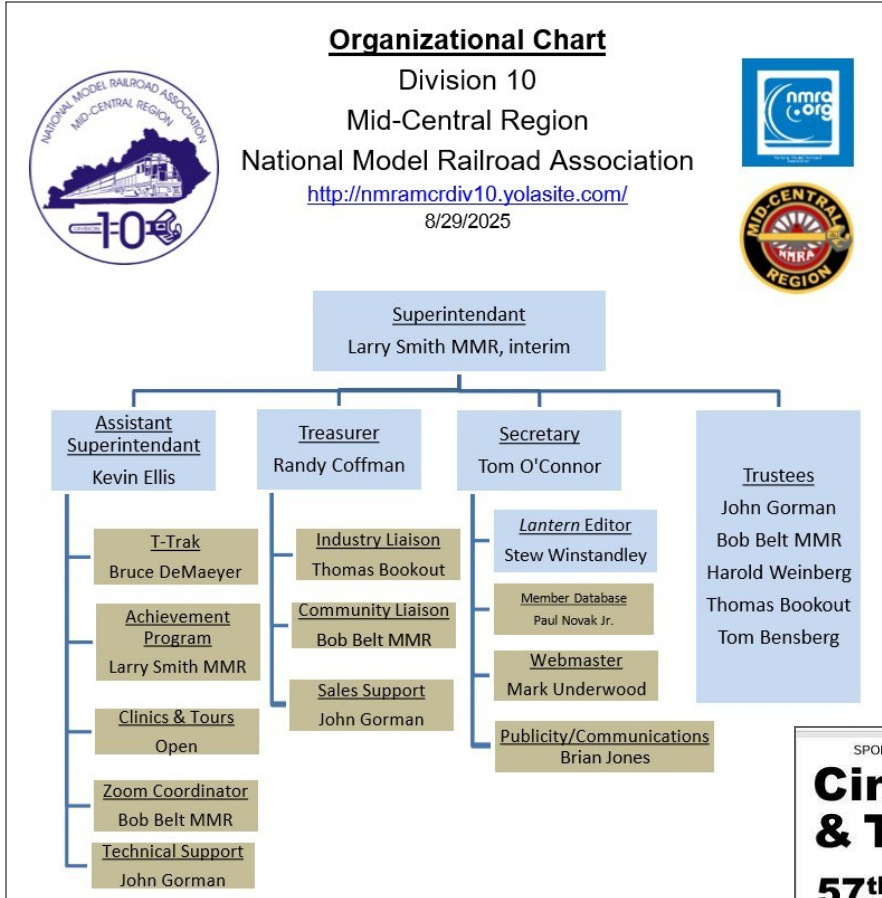
In Recognition...

Many thanks to folks listed in the column below. They have given their support for our club. We encourage all NMRA members to help with financial support to The Lantern and our website and the Division 10's activities. **Send your monetary contribution to our Treasurer.**

To be listed here your contribution needs to be at least \$20 in cash, or material valued at \$50, or a total of 20 hours time within the last year. Division 10 receives NO monetary support from the NMRA or the MidCentral Region. Div.10 is recognized by the US government as a 501c3 corporation and your cash or material donations may be tax deductible.

Report materials or time to Stew Winstandley. To the right of each contributing member's name is the month of his or her latest contribution. Whenever one makes a contribution of money, material, or time, his or her date will be updated, and for new contributors, their name will be added. Anyone making a contribution will be listed below for 12 months.

- | | |
|-----------------|--------|
| Harold Weinberg | 1/2025 |
| Lou Jaquith | 11/24 |



Division 10's advertising policy:

A. COMMERCIAL AD RATES 1. Newsletter • \$10/month for business card • \$15/month for 1/8 page or less • \$25/month for 1/4 page • \$45/month for 1/2 page • \$80/month for full page • Multiple separate ads can be aggregated together for the above price structure. . Web site: No commercial ads allowed.

B. MEMBER AD RATES 1. Newsletter: Member rates will be at 20% of the commercial rates Members that have a commercial business will pay the commercial

Website addresses are: 1) above at top of Organization Chart,

2) <https://www.facebook.com/NMRA.MCR.Div10/> and

3) <http://trak.wikidot.com/nmra-mcr-division-10-the-kentucky-division>

4) YouTube.com search: Division 10 Mid Central Region NMRA, Past Div.10 clinics are available on YouTube.

Contributions to Division 10 are sent to the treasurer, Randy Coffman. His address is 1500 River Circle Dr, Richmond, KY 40475-7907.

SPONSORED BY CINCINNATI DIV. 7 OF THE NATIONAL MODEL RAILROAD ASSOC

Cincinnati Model Train & Trade Show

57th Annual

Lakota West High School

Sat & Sun October 11 & 12, 2025

10 am - 4 pm both days

FREE PARKING!

- Model Trains in All Scales
- Operating Layouts & Displays
- Retail Sales – over 250 tables!
- Hourly Door Prizes
- FREE Locomotive Test Booth
- ATMs at several nearby banks

FUN for the Whole Family!

\$10 Admission (cash only, ATMs off-site)
Children 12 and under and Scouts in uniform free, with paying adult – No animals allowed, except service dogs

8940 Union Centre Blvd, West Chester, Ohio 45069

This event will be operated under all local, state and federal health guidelines in effect at that time. Masks are currently optional. If recommended, hand sanitizer will be available at multiple locations. Subject to cancellation due to events beyond our control. See <https://cincy-div7.org/local-events> for last-minute info or changes. Sales tables are \$40 each – reserve via rhord@fuse.net

Chance to Win a Model Train Set!

Must fill out door prize slip. One entry per paying attendee. Need not be present at drawing.

For more info see www.cincy-div7.org – For tables contact rhord@fuse.net

Comments, and whatever, from the editor (Stew Winstandley)

During the September meeting Larry Smith presented two awards to Bob Belt, and one award to Brad Lockwood. Bob received his Master Modeler—Cars, and a Merit Award. Brad got his Golden Spike Award.

The October meeting features Harold Weinberg telling us about the animation of his Cleveland and Moweaqua layout. In the world of prototype railroads the Norfolk Southern has a line through Cleveland and a line through Decatur, Illinois. The Decatur Junction Railway has trackage between Decatur and Moweaqua, Illinois, but only interchanges in Decatur with the Canadian National.

In Larry's report on page 1 he discusses Division 10's group.io. If you have not joined the group, I would recommend that you do. Contact Larry if you want to join. It is just email messages through your inbox, but can promote interesting discussions to help members with their modeling. Recently Rich Long started a discussion about installing two DCC decoders in a locomotive with two motors. Before that a Throwback Thursday email about a ten year ago Bring and Brag helped revive the possibility of adding Bring and Brag to our monthly meetings. A suggestion was made to maybe change its name but it will be a way to share our work with other members.

A group.io post comes on Mondays from Fred Soward that lists links to interesting modeling videos. The post prior to this issue of our newsletter had a link to an easy way to create a file for 3D printing. I have completed a lot of model railroad cars and locomotives that were 3D printed. But the design was always done by someone else. Designing through CAD software is complicated and time consuming. I recently got a project to print HO models of the new sugarcane cars purchased by the U S Sugar Corporation in Florida. I was provided with the FreightCar America's STP file which is used in the manufacture of the cars. 3D printing takes place using a STL file. STP (Standard for the Exchange of Product model data) and STL (Standard Triangle Language representing surface geometry for 3D printing) are file extensions. I was able to convert the 1:1 file to a 1:87 file, and member Frank Stevenson tried printing the car on his 3D printer. Changing to 1:87 makes it unprintable. The sides, etc of the car reduced 87 times just won't work. So in this case I had to find someone with the skill and expertise to design the model with CAD. The manufacturer's STP file facilitated the design. Fred's link to the video was about using software with photographs to do the design work. Another possibility is a 3D scanner. Many years ago during a Tuesday evening session we went to a local outfit that produced 3D printed parts for Toyota. One of our member's head was scanned and he got a printed bust of his head. But with a scanner you need a scannable object.

Above I mentioned the U S Sugar Corporation. USSC has hundreds of miles of track in their sugarcane fields and recently took delivery of 250 new cars for hauling the cane to the mill. They also have a line from near Fort Pierce to Clewiston to Sebring, Florida run by their South Central Florida Express with interchanges with CSX and Florida East Coast. The November 2025 issue of *Trains Magazine* has an article titled "Short line success in the Sunshine State" which includes information on page 38 about U S Sugar's railroads.

THE LANTERN

NEWSLETTER FOR NMRA MCR DIVISION 10

210 BRANNON RD.
NICHOLASVILLE, KY 40356-9711
nmramcrdiv10.yolasite.com



OCT. 5, 2PM

EASTSIDE LIBRARY, 3000
BLAKE JAMES DR.,
LEXINGTON 40509 AND
ONLINE VIA ZOOM

SHORT
PRESENTATION

NONE

MEETING AGENDA

ANIMATING THE CLEVELAND
AND MOWEAQUA RAILROAD,
HAROLD WEINBERG

TOURS

NONE



BOB BELT MMR RECEIVED TWO AWARDS AT THE SEPTEMBER MEETING. HERE'S ONE OF THEM.

Brad Lockwood received his Golden Spike Award. All awards were presented by Larry Smith MMR.



AROUND THE BEND

MON.	DAY	HOST	PLACE	EVENT / PROGRAM	TOURS	BRING & SHARE
Oct.	5	Div. 10	Eastside Library and via Zoom	Animating the Cleveland & Moweaqua RR, Harold Weinberg	None	
Oct..	11-12	Div. 7	West Chester, Ohio	Model Train and Trade Show, 10 to 4, see flyer on page 2		
Nov.	2	Div. 10	Eastside Library and via Zoom	Dioramas of Western Mining Scenes, Pat Gerstle	None	
Nov..	15	Div. 8	Louisville	Train Show and Sale, 10-3, see end of page 1		
Dec.	7	Div. 10		Track Cleaning, Cecil Hestand Jr.	None	

A link for Zoom access will be emailed near the end of the week before the meeting.