



THE LANTERN



NOVEMBER 2025 VOLUME 27 ISSUE 11

Superintendent's Report

I can feel the Autumn weather coming. It is almost November so we should expect some cooler weather. The cooler weather means the outdoor activities will end and we can begin to think more about working on our layouts. It will be the time for working on model railroading. This can mean either your layout or doing some modeling on railroad related items. I would like to have some more layout tours this Spring. We all need to see what our fellow members are doing.

Working on model railroading reminds me of the new initiative by Cecil Hestand to start what is called the Monthly Model Showcase. The emphasis will be on showing what you have been working on and explaining how you did it. You can either bring the model to the meeting or submit photos to Cecil. Cecil's email is: cecahes@gmail.com. I was thinking you could bring something to show that may not be completely finished but you could then question the members to receive some suggestions on how to finish it, I do not think Cecil will mind also doing it this way. The important thing is to bring SOMETHING to the group to show. This push by Cecil will not work if members do not bring something. Please help the division and the members. You may think you do not have anything to share but I bet you do, and the rest of the members are interested in seeing what others are doing and to learn from it. We have a lot of talented modelers in the division and we have many things that can be shown. Cecil has prepared a list of suggested topics for the upcoming months. The next ones will be listed on page 4, so plan when and what you can bring to present a model to share.

Our November meeting will be on the 2nd at the Eastside library, on the second floor in the medium conference room. Our presenter is member Pat Gerstle. He will present "Dioramas of Western Mining Scenes". Pat has been working on these dioramas. Pat is a very good modeler so I am looking forward to hearing what he has to say. In December Cecil Hestand will present on "Track Cleaning". This is something we all need to know how to do since the track over time will become dirty and affect engine performance. We will be meeting at the Eastside library again. Please note that the

December meeting is on the second Sunday, the 14th.

Remember the Division 8's Louisville train show on November 15th from 10 to 3 PM. And, that a NMRA member with card in hand, will be admitted at 9 AM, an hour earlier than the general public, with a chance to see the goodies early. The location is the Holy Family Parish at 3938 Poplar Level Road in Louisville. It is located approximately two blocks north of the Waterson Expressway on the left hand side of the road.

Take care of yourselves and enjoy the Fall weather. If you have not recently seen or heard from a member you remember, please call or contact them to see how they are.
—Larry Smith MMR

Train Ride with N&W 611 by Larry Smith

I saw the email! Virginia Scenic Railroad announced a special steam train ride behind N&W 4-8-4 611. I love that engine. We rode behind it before in the Atlanta area and I did some extra railfanning on it. What if I could have a chance to ride behind it one more time? I looked for the date tickets would begin selling and when it arrived I was ready with the phone in hand to get some tickets. I was successful and so I planned the trip to Goshen, Virginia, from where the train would leave.

The day before the ride, we headed out on the six hour drive to Virginia and the steam train excursion the next day. The day before we left, we upgraded to the upper dome car Why not treat ourselves? The day of the ride we headed to from where the train would leave in Goshen. When we got there, no station in sight but there were some tents set up. There were lots of parking space available in the lot. Boarding signs were set beside the track for the various types of passenger cars. Being early, we had to wait and walked on the gravel several times, going back and forth, for the tickets and things forgotten in the car. Check this, forgot that. Finally with our tickets we boarded the train. (Continued on page 3)



For the NMRA MC Region officers link to www.midcentral-region-nmra.org/bod2.html

The Lantern is a monthly (except July) publication of Division 10, Mid Central Region (MCR), National Model Railroad Association (NMRA). All opinions expressed herein are those of the authors, and do not necessarily reflect those of Division 10, the MCR, the NMRA, or anyone else.

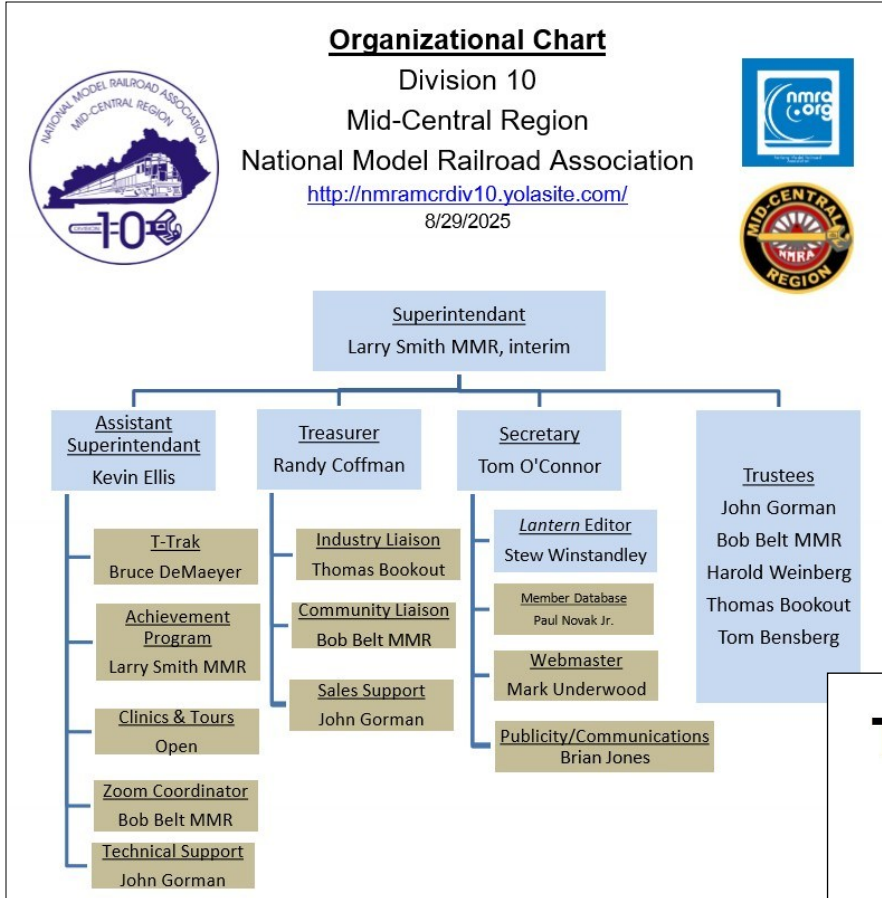
In Recognition...

Many thanks to folks listed in the column below. They have given their support for our club. We encourage all NMRA members to help with financial support to *The Lantern* and our website and the Division 10's activities. **Send your monetary contribution to our Treasurer.**

To be listed here your contribution needs to be at least \$20 in cash, or material valued at \$50, or a total of 20 hours time within the last year. Division 10 receives NO monetary support from the NMRA or the MidCentral Region. Div.10 is recognized by the US government as a 501c3 corporation and your cash or material donations may be tax deductible.

Report materials or time to Stew Winstandley. To the right of each contributing member's name is the month of his or her latest contribution. Whenever one makes a contribution of money, material, or time, his or her date will be updated, and for new contributors, their name will be added. Anyone making a contribution will be listed below for 12 months.

Harold Weinberg	1/2025
Lou Jaquith	11/24



Division 10's advertising policy:

A. COMMERCIAL AD RATES 1. Newsletter • \$10/month for business card • \$15/month for 1/8 page or less • \$25/month for 1/4 page • \$45/month for 1/2 page • \$80/month for full page • Multiple separate ads can be aggregated together for the above price structure. . Web site: No commercial ads allowed.

B. MEMBER AD RATES 1. Newsletter: Member rates will be at 20% of the commercial rates Members that have a commercial business will pay the commercial

Website addresses are: 1) above at top of Organization Chart,

2) <https://www.facebook.com/NMRA.MCR.Div10/> and

3) <http://ttrak.wikidot.com/nmra-mcr-division-10-the-kentucky-division>

4) YouTube.com search: Division 10 Mid Central Region NMRA, Past Div.10 clinics are available on YouTube.

Contributions to Division 10 are sent to the treasurer, Randy Coffman. His address is 1500 River Circle Dr, Richmond, KY 40475-7907.

TRAIN SHOW & SALE

OUR 35TH YEAR

SATURDAY NOVEMBER 15, 2025 10:00 AM to 3:00 PM
HOLY FAMILY PARISH SAFFIN CENTER
3938 POPLAR LEVEL Rd, LOUISVILLE, KY 40213

- MODEL TRAINS IN ALL SCALES
- OPERATING LAYOUTS AND DISPLAYS
- RETAIL SALES - OVER 100 DEALER TABLES
- MODEL RAILROAD EDUCATION
- JOIN THE NMRA - NATIONAL MODEL RAILROAD ASSOCIATION
- HOURLY DOOR PRIZES!
- GREAT FOOD & BEVERAGES
- FREE PARKING

\$6.00 PER PERSON - CHILDREN 12 AND UNDER FREE WITH AN ADULT
 SPONSORED BY NATIONAL MODEL RAILROAD ASSOCIATION
 DIVISION 8 - MID CENTRAL REGION

FOR MORE INFORMATION VISIT
 WEBSITE: <http://div8-mcr-nmra.org>
 ADVANCE TICKETS: <http://tinyurl.com/fall2025trainshow>

ADVANCE TICKETS

DEALER INFORMATION

WEBSITE

(continued from page 1) Our car was the only dome car, built in 1948 by Budd for the Western Pacific, a California Zephyr Silver Palace passenger car now named Shenandoah. We liked the view from the top but the windows could have been cleaner. Our car was near enough to the steam engine so we got to see it working. Neat, but we could not smell the smoke.

Lots of beautiful rolling countryside between the mountains on either side of the Shenandoah Valley. A couple small cities and only one industry, a tie making plant, which was the only industry on the Buckingham Branch Line which served as the host railroad. Virginia Scenic RR is the passenger venue. We traveled to Staunton, VA, about 42 miles north, stopped for awhile, and then the two diesels on the other end took us back to the starting point near Goshen. One was lettered for the Buckingham Branch (BB16 a GP38-2) and the other for Precision Rail (PNLX 57 a GP40WH-2). Coming back I went to a vestibule and took some pictures. It was a chance to get some pictures even if it meant leaving the dome seats. I enjoyed the 2 and a half hour ride. Our young female car host was excellent in serving us drinks and snacks and taking care of us. If closer to home, we will do it again.



If you want a model of 611, the choices are: (1) the Bachmann Trains HO and N scale, (2) Lionel O gauge, (3) Williams O gauge, (4) MTH O scale, and (5) Fox Valley (scaletrains.com) new HO scale. Bachmann 611 model is pictured above. Bachmann also has a model of the NW water tender. Photos below of NW 611 and the Shenandoah were taken at the excursion.



THE LANTERN

NEWSLETTER FOR NMRA MCR DIVISION 10

210 BRANNON RD.
NICHOLASVILLE, KY 40356-9711
nmramcrdiv10.yolasite.com



Nov. 2, 2PM

**EASTSIDE LIBRARY, 3000
BLAKE JAMES DR.,
LEXINGTON 40509 AND
ONLINE VIA ZOOM**

MODELERS SHOWCASE

CABOOSE

MEETING AGENDA

DIORAMAS OF WESTERN
MINING SCENES, PAT
GERSTLE

TOURS

NONE



MONTHLY MODELERS SHOWCASE

AFTER THE CLINIC AT THE NOVEMBER MEETING DIVISION 10 WILL BEGIN A "MEMBERS' SHOWCASE". THIS IS SIMILAR TO THE PAST BRING AND BRAG. EACH MONTH'S MODEL SHOWCASE SUBJECT WILL BE LISTED IN THE SCHEDULE ON PAGE 4. BRING YOUR MODELS TO THE MEETING AND DISCUSS SOME INFORMATION ABOUT IT. IF YOU'RE UNABLE TO ATTEND THE MEETING YOU CAN EMAIL A COUPLE OF PHOTOS OF THE MODEL TO CECIL HESTAND, JR AT CECAHES@GMAIL.COM. IF YOU DO NOT HAVE A SPECIFIED ITEM, YOU MAY ENTER A "MODELER'S CHOICE". THE FIRST SHOWCASE WILL BE ABOUT CABOOS. PHOTO TO THE RIGHT IS OF THE PROTOTYPE CABOOSE AT THE BLUEGRASS RAILROAD MUSEUM WITH STEW WINSTANDLEY'S MODEL IN THE FOREGROUND.



AROUND THE BEND

MON.	DAY	HOST	PLACE	EVENT / PROGRAM	TOURS	SHOWCASE
Nov.	2	Div. 10	Eastside Library and via Zoom	Dioramas of Western Mining Scenes, Pat Gerstle	None	Caboose
Nov.	15	Div. 8	3938 Poplar Level Rd, Louisville 40213	Train Show and Sale, 10-3, see page 2	T-TRAK at the show	
Dec..	14 (2nd Sunday)	Div. 10	Eastside Library	Track Cleaning, Cecil Hestand, Jr.	None	Structures
Jan.	4	Div. 10	Eastside Library	Scenery, Creating an Old Fashioned Memory, Rich Murphy	None	Freight Cars
Feb..	1	Div. 10		Modeling Skills	None	Vehicles

A link for Zoom access will be emailed near the end of the week before the meeting.