



# THE LANTERN



FEBRUARY 2026 VOLUME 28 ISSUE 2

## Superintendent's Report

With Winter here, I have managed to get some work done on my layout. The table where I have piled up projects to work on, now some of the piles are going down. Little by little, some things are getting done. I hope you have been working on your layout, or something related to model railroading.

Our next meeting will be February 1, at 2 PM, on the second floor of the Eastside library in the medium conference room. At that time, we will hear from Eric Zimmerman, Superintendent of Division 3, about "Whistle Stop Dayton", the regional convention for this year. I heard him speak earlier about the convention and it sounds like it will be a good one. Lots of valuable activities are being planned. As I have mentioned before, if you have not attended a regional convention, you should put one on your bucket list. Lots of activities, lots of people to meet, see old friends, and find out what many things are going on, and what interesting things members are doing. It is a good experience for model railroaders.

Our February program will be "Scenery – Recreating an Old Unfinished Memory" presented by Rich Murphy. As you know, Rich is a master at scenery and it will be interesting to hear what he is doing. He always does an entertaining and informative presentation.

On March 1, we will again have a "hands on" teaching session where members can learn and actually work on certain skills that we all need in model railroading. I wish to thank Tom Bensberg for organizing this learning experience for all of us, and for the other activities he has volunteered for.

Cecil Hestand is organizing and handling our Monthly Modelers Showcase. We showcased Structures last month. I recently sent the list of topics for each month. Please look over the list and see where you can participate. It does not require a lot of work on your part, but the members will benefit from it. We all should be sharing what we are doing with others. Bring something and tell the members how you did it. I know everyone has at least something they can contribute. For February, the topic is freight cars. Please bring your favorite freight car or cars to the February meeting, or you can send your photos to Cecil Hestand at [cecahes@gmail.com](mailto:cecahes@gmail.com) by midnight Thursday before the Sunday meeting, which in this case is January 29th.

I would also like to thank Cecil for last month presenting a clinic on track cleaning. That is something we all need to know how to do, and I appreciate Cecil doing a clinic.

In December we had 49 members on our membership list that we receive from national.

As always, take care and stay safe.

—Larry Smith MMR



Atlas has produced the above 250th Anniversary model in O scale for \$750, but the model is already listed as Sold Out.



Your portal to more fun in model railroading

For the NMRA MC Region officers link to [www.midcentral-region-nmra.org/bod2.html](http://www.midcentral-region-nmra.org/bod2.html)

*The Lantern* is a monthly (except July) publication of Division 10, Mid Central Region (MCR), National Model Railroad Association (NMRA). All opinions expressed herein are those of the authors, and do not necessarily reflect those of Division 10, the MCR, the NMRA, or anyone else.

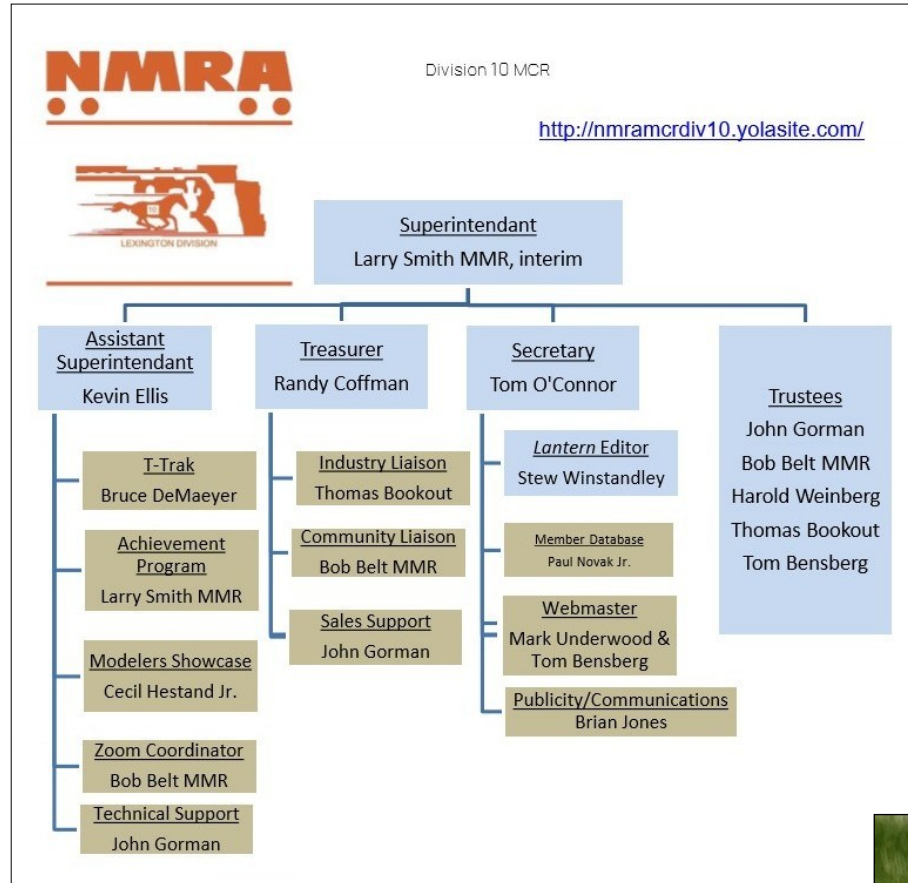
## In Recognition...

Many thanks to folks listed in the column below. They have given their support for our club. We encourage all NMRA members to help with financial support to *The Lantern* and our website and the Division 10's activities. **Send your monetary contribution to our Treasurer.**

To be listed here your contribution needs to be at least \$20 in cash, or material valued at \$50, or a total of 20 hours time within the last year. Division 10 receives NO monetary support from the NMRA or the MidCentral Region. Div.10 is recognized by the US government as a 501c3 corporation and your cash or material donations may be tax deductible.

Report materials or time to Stew Winstandley. To the right of each contributing member's name is the month of his or her latest contribution. Whenever one makes a contribution of money, material, or time, his or her date will be updated, and for new contributors, their name will be added. Anyone making a contribution will be listed below for 12 months.

Rich Murphy	12/25
Lou Jaquith	11/25
Randy Coffman	11/25



The February Showcase is freight cars. The one shown below was 3D printed by Frank Stevenson.



### Division 10's advertising policy:

A. COMMERCIAL AD RATES 1. Newsletter • \$10/month for business card • \$15/month for 1/8 page or less • \$25/month for 1/4 page • \$45/month for 1/2 page • \$80/month for full page • Multiple separate ads can be aggregated together for the above price structure. . Web site: No commercial ads allowed.

B. MEMBER AD RATES 1. Newsletter: Member rates will be at 20% of the commercial rates Members that have a commercial business will pay the commercial

Website addresses are: 1) above at top of Organization Chart,

2) <https://www.facebook.com/NMRA.MCR.Div10/> and

3) <http://ttrak.wikidot.com/nmra-mcr-division-10-the-kentucky-division>

4) YouTube.com search: Division 10 Mid Central Region NMRA, Past Div.10 clinics are available on YouTube.

Contributions to Division 10 are sent to the treasurer, Randy Coffman. His address is 1500 River Circle Dr, Richmond, KY 40475-7907.

Types of Freight Cars as listed by Gemini.google.com.

### 1. Boxcars (The "General Purpose" Cars)

Enclosed cars designed to protect freight from weather and theft.

- **Standard Boxcar:** Used for paper, forest products, and general palletized goods.
- **Insulated Boxcar:** Like a standard boxcar but with insulation to protect against temperature swings (no refrigeration unit).
- **High-Cube Boxcar:** Taller than standard cars (usually 17' high) for high-volume, low-weight cargo like appliances or auto parts.
- **Refrigerated Boxcar ("Reefer"):** Equipped with a refrigeration unit for perishable food.

### 2. Hopper Cars (The "Bulk" Cars)

Designed for loose, free-flowing commodities. They load from the top and unload via gravity through "gates".

- **Covered Hopper:** Features a roof to keep contents dry. Used for grain, cement, sand, sugar, and plastic pellets.
- **Open-Top Hopper:** No roof. Used for weather-resistant bulk items like coal, coke, and aggregate.
- **Ballast Car:** A specialized hopper used in maintenance-of-way (MOW) to spread gravel (ballast) along the tracks.

### 3. Gondolas (The "Heavy Duty" Cars)

Open-top cars with fixed sides and ends. Unlike hoppers, they have solid floors (usually) and are unloaded from the top with a crane or by a rotary dumper.

- **Standard Gondola:** Used for scrap metal, steel plates, logs, and debris.
- **Coil Car:** A specialized gondola with "troughs" to hold heavy steel or copper coils. Often has a removable "hood" to protect the coils from rust.
- **Mill Gondola:** Extra-long gondolas (65 feet) designed for carrying long structural steel beams.

### 4. Flatcars (The "Versatile" Cars)

Open-deck cars for oversized, heavy, or oddly shaped loads.

- **Standard Flatcar:** An open deck for machinery, tractors, or military vehicles.
- **Bulkhead Flatcar:** Features walls at both ends to prevent the load from shifting forward or backward.
- **Centerbeam Flatcar:** Has a tall "partition" running down the center to secure bundled building materials.
- **Log Car:** A skeleton-frame flatcar with "stakes" on the sides to hold raw logs.

### 5. Intermodal Equipment (The "Container" Cars)

These cars are the backbone of modern global trade, designed to carry shipping containers or truck trailers.

- **Well Car (Stack Car):** Features a "well" that sits low between the wheels, allowing two containers to be stacked.
- **Spine Car:** A lightweight, skeletonized flatcar designed to carry either containers or trailers in a single layer.

### 6. Tank Cars (The "Liquid" Cars) Cylindrical cars designed for liquids, gases, and slurries.

- **General Service Tank Car:** For non-hazardous liquids like corn syrup, water, or vegetable oils.
- **Pressure Tank Car:** For hazardous or pressurized gases like propane, anhydrous ammonia, or chlorine.
- **Acid/Corrosive Tank Car:** Specially lined to handle chemicals that would eat through standard steel.

### 7. Specialized (But Standard) Service

- **Autorack:** An enclosed, multi-level car (bi-level or tri-level) used exclusively to transport finished automobiles.
- **Caboose:** Historically the "office" at the end of the train. While mostly retired, they are still used today as "shoving platforms" for safety during long reverse movements.

# THE LANTERN

NEWSLETTER FOR NMRA DIVISION 10 MCR

210 BRANNON RD.  
NICHOLASVILLE, KY 40356-9711  
nmramcrdiv10.yolasite.com

**FEB. 1, 2PM**

**EASTSIDE LIBRARY, 3000  
BLAKE JAMES DR.,  
LEXINGTON 40509 AND  
ONLINE VIA ZOOM**

**MODELERS  
SHOWCASE**

FREIGHT CARS

**MEETING AGENDA**

CREATING AN OLD FASHION  
MEMORY, RICH MURPHY

**SHORT  
PRESENTATION**

MCR CONVENTION

## MONTHLY MODELERS SHOWCASE

DURING THE NOVEMBER MEETING A NEW FEATURE, THE MODELERS SHOWCASE WAS INAUGURATED. THE FEBRUARY MEETING WILL FEATURE FREIGHT CARS. BRING YOUR FAVORITE AND TELL US ABOUT IT. ONE TYPE OF FREIGHT CAR TO BE SEEN AT THE MEETING IS THE USCX MODEL PICTURED ON PAGE 2. THERE ARE MANY TYPES OF FREIGHT CARS, SO SHOW US ONE OF YOUR



INTERESTING ONES. THE PHOTO TO THE LEFT IS OF BULKHEAD FLAT CARS. THESE ARE RJ CORMAN'S WITH ALUMINUM INGOTS.

## AROUND THE BEND

MON.	DAY	HOST	PLACE	EVENT / PROGRAM	TOURS	SHOWCASE
Feb.	1	Div. 10	Eastside Library and via Zoom	Scenery, Creating an Old Fashioned Memory, Rich Murphy Also an update on the MCR Convention in Dayton	None	Freight Cars
March	1	Div. 10	Eastside Library	Modeling Skills, Hands On	None	Steam Motive Power
.March.	7	Div. 7	5050 Tylersville Rd, West Chester, OH 45069	Flea Market & Trade Show, Lakota West Freshman Campus	Layouts on site	
March	21	Div. 8	3938 Poplar Level Rd, Louisville 40213	Trade Show & Sale, Holy Family Parish Saffin Center	Layouts on site	
April	12 (2nd Sunday)	Div. 10	Eastside Library	Easily Superdetailing Boxcars, John Hemsath	None	Vehicles

A link for Zoom access will be emailed near the end of the week before the meeting.

Suggestions for Clinics are needed. Contact Larry with your recommendation.