



THE LANTERN



MARCH 2026 VOLUME 28 ISSUE 3

Superintendent's Report

I can see green grass! All of you probably know what I am talking about. Since it is mid February, I hope we will not have a snow repeat until next year

Our meeting on March 1 at Eastside library in the second floor conference room will be lead by Tom Bensberg focusing on "Modeling Skills you should Know". Tom previously did this at an earlier meeting and did a great job. He will again focus on "hands on" skills for us model railroaders. These are: 1) Electrical connectors, 2) Basic Scenery and 3) Basic trees and bushes. Everyone will have a chance to participate on each one. I would like to thank Tom again for setting this up and managing the process.

On April 12 at the same location, our presenter will be John Hemsath MMR, presenting "Easy Superdetailing a Boxcar". We all should try to make our cars on the layout as authentic as possible by adding details to them and John will show us how to easily do it. I have done this some, but many other cars can use some added details. John is a member of our region, and if you go to a regional convention you will have a chance to meet John and other fine gentlemen while enjoying all the activities. On May 3, we will have an old friend back to present another fine program. Charles Bogart will tell us about "Then and Now, Winchester to Corbin". This section of CSX was once very busy. Charles will tell us what the situation is now and what the future may hold for it

I would like to thank Rich Murphy for presenting last month about the scenery on his layouts. Rich always does a great job with scenery and I hope you had a chance to pick up some pointers.

At the March meeting we will also have the Monthly Modelers Showcase lead by Cecil Hestand. The subject for March is Steam Power. I love steam engines although I do not have many myself. I will show mine and I hope you will show yours off also. Either bring it to the library or email pictures to Cecil (cecahes@gmail.com) before the evening of February 26. Or you can send them to Bob Belt on the 27th. My first thought of this topic was a steam engine, but I know there are other things on the railroad which were steam powered.

Plan to attend the regional convention "Whistle Stop Dayton" which will be held June 4-7, 2026. It is chance to enjoy a lot of worthwhile activities with other like minded modelers. There is still time to register. If you need more info, the website is <https://www.nmra.org/events/whistle-stop-dayton-ohio>. Our June meeting is the 14th.

We are searching for a volunteer for our Secretary position. I wish to thank Tom for doing such a good job as Secretary. Tom volunteered to help out soon after he joined. Others in our division have also, realizing things will not get done unless someone volunteers to do it. We need participation in such activities as being an officer, a trustee, having a layout tour, creating programs, social events, bringing models to meetings, setting up T-TRAK, etc., all making sure the division runs well. We cannot function without members helping out.

As always, take care and stay safe. —Larry Smith



Your portal to more fun in model railroading

For the NMRA MC Region officers link to www.midcentral-region-nmra.org/bod2.html

The Lantern is a monthly (except July) publication of Division 10, Mid Central Region (MCR), National Model Railroad Association (NMRA). All opinions expressed herein are those of the authors, and do not necessarily reflect those of Division 10, the MCR, the NMRA, or anyone else.

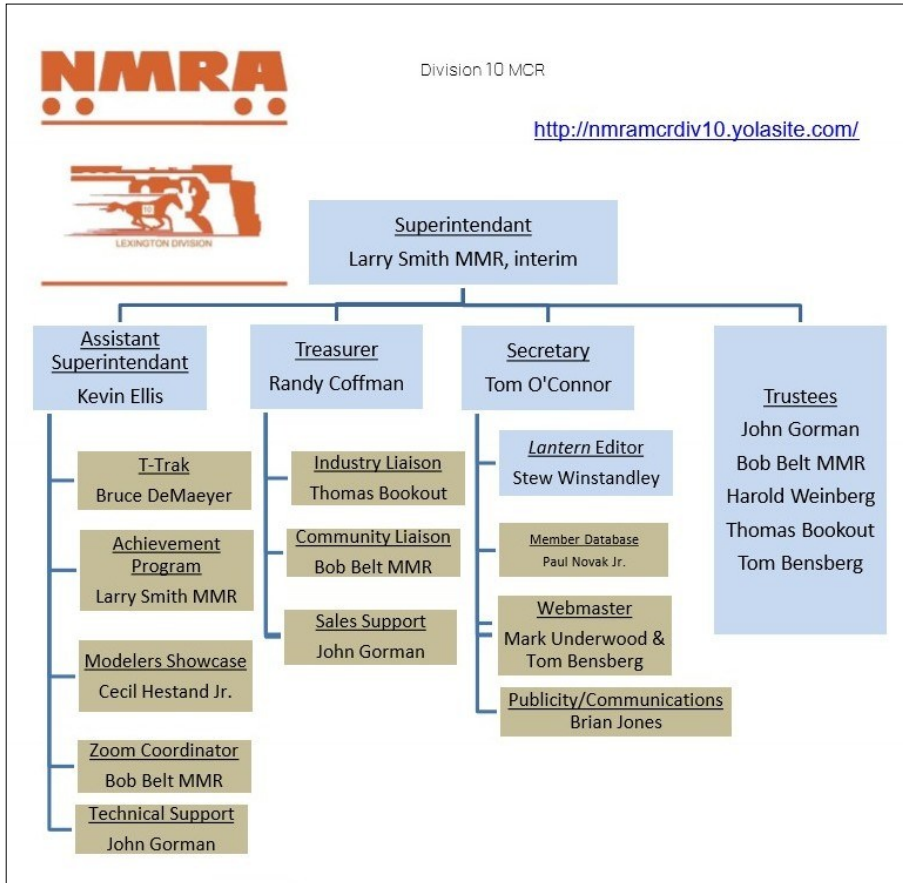
In Recognition...

Many thanks to folks listed in the column below. They have given their support for our club. We encourage all NMRA members to help with financial support to *The Lantern* and our website and the Division 10's activities. **Send your monetary contribution to our Treasurer.**

To be listed here your contribution needs to be at least \$20 in cash, or material valued at \$50, or a total of 20 hours time within the last year. Division 10 receives NO monetary support from the NMRA or the MidCentral Region. Div.10 is recognized by the US government as a 501c3 corporation and your cash or material donations may be tax deductible.

Report materials or time to Stew Winstandley. To the right of each contributing member's name is the month of his or her latest contribution. Whenever one makes a contribution of money, material, or time, his or her date will be updated, and for new contributors, their name will be added. Anyone making a contribution will be listed below for 12 months.

Rich Murphy	12/25
Lou Jaquith	11/25
Randy Coffman	11/25



The March Showcase is steam power. Steam has been mentioned on every page of this newsletter issue. Since we have steam locomotive models I've looked into other steam power used by the railroads. A Search found that Bachmann has produced a steam powered crane model as shown below.

Division 10's advertising policy:

A. COMMERCIAL AD RATES 1. Newsletter • \$10/month for business card • \$15/month for 1/8 page or less • \$25/month for 1/4 page • \$45/month for 1/2 page • \$80/month for full page • Multiple separate ads can be aggregated together for the above price structure. . Web site: No commercial ads allowed.

B. MEMBER AD RATES 1. Newsletter: Member rates will be at 20% of

Website addresses are: 1) above at top of Organization Chart,

2) <https://www.facebook.com/NMRA.MCR.Div10/> and

3) <http://ttrak.wikidot.com/nmra-mcr-division-10-the-kentucky-division>

4) YouTube.com search: Division 10 Mid Central Region NMRA, Past Div.10 clinics are available on YouTube.

Contributions to Division 10 are sent to the treasurer, Randy Coffman. His address is 1500 River Circle Dr, Richmond, KY 40475-7907.



Types of steam power

A couple examples of steam power is shown in the photos below. The top photo is of a WP&Y steam snowplow being pushed by steam locomotives. The bottom photo is of an ATSF steam crane used in rerailing. Videos of snow plowing on garden railroads are available on the internet.



THE LANTERN

NEWSLETTER FOR NMRA DIVISION 10 MCR

210 BRANNON RD.
NICHOLASVILLE, KY 40356-9711
nmramcrdiv10.yolasite.com

MARCH 1, 2PM

**EASTSIDE LIBRARY, 3000
BLAKE JAMES DR.,
LEXINGTON 40509 WITH
ONLINE ZOOM**

**MODELERS
SHOWCASE**

STEAM POWER

MEETING AGENDA

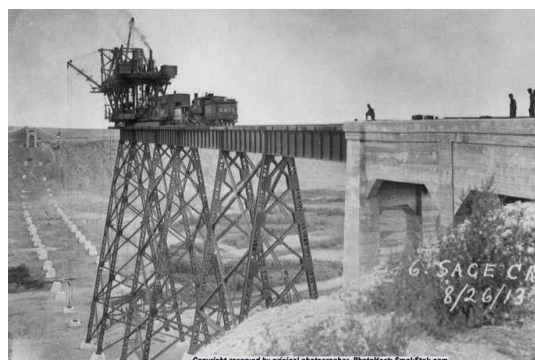
HANDS ON LEARNING OF
SKILLS, TOM BENSBERG

**SHORT
PRESENTATION**

NONE

MONTHLY MODELERS SHOWCASE

EACH MEETING NOW HAS A MODELERS SHOWCASE. THE MARCH MEETING WILL FEATURE "STEAM POWER". THIS TOPIC WAS PREVIOUSLY STEAM MOTIVE POWER, BUT SINCE STEAM WAS USED IN VARIOUS RAILROAD APPLICATIONS, IT WAS CHANGED TO STEAM POWER. IN ADDITION TO STEAM LOCOMOTIVES, THE RAILROADS ALSO HAD STEAM POWERED SNOW-PLOWS AND CRANES. STEAM SHOVELS WERE USED IN RAILROAD CONSTRUCTION. THE MAJORITY OF WHAT WE HAVE TO DISPLAY WILL BE STEAM LOCOMOTIVES, BUT IF YOU HAVE ANY MODELS OR PHOTOS OF OTHER STEAM POWERED EQUIPMENT, INCLUDE THEM IN THE SHOWCASE. PHOTO IS OF A STEAM CRANE USED IN BRIDGE CONSTRUCTION.



AROUND THE BEND

MON.	DAY	HOST	PLACE	EVENT / PROGRAM	TOURS	SHOWCASE
March	1	Div. 10	Eastside Library and Zoom online	Hands On Modeling Skills	None	Steam Power
March	7	Div. 7	5050 Tylersville Rd, West Chester, OH 45069	Flea Market & Trade Show, Lakota West Freshman Campus	Layouts on site	
March.	21	Div. 8	3938 Poplar Level Rd, Louisville 40213	Trade Show & Sale, Holy Family Parish Saffin Center, 10-3	Layouts on site	
April	12 (2nd Sunday)	Div. 10	Eastside Library and Zoom online	Easily Superdetailing Boxcars, John Hemsath	None	Vehicles
May	3	Div. 10	Eastside Library	Then and Now, CSX Winchester to Corbin, Charles Bogart	None	Passenger Equipment

The link for Zoom access to the meeting will be emailed on Friday, the 27th. The page 1 report includes the website address for the MCR June Convention. The flyer for the Division 8 show can be seen at [2026.03.21 Train Show Flyer Advance Ticket COLOR V3.docx](#) .