



# THE LANTERN



MAY 2026 VOLUME 28 ISSUE 5

## Superintendent's Report

Looking at the calendar, it is almost May. At the end of May will be the Regional Convention in Dayton. A website link is available at the bottom of page 4. There is still time to sign up and attend the convention. A convention is a valuable and worthwhile experience for your model railroading. As I have mentioned before, if you have not ever attended a convention, you are missing a lot. You can learn a lot about modeling and meet some other persons who also like railroading and find out what they know. Everyone is willing to share ideas and information.

On May 3rd, we will have an old friend back to present another fine program. Charles Bogart will tell us about "Then and Now; Winchester to Corbin." This section of CSX line was once very busy but now not as much. Charles will tell us what the situation is now and what the future might hold for this line. Charles always gives a good and entertaining presentation. We will again be meeting at the Eastside Library on the second floor. I would like to see you there, but we do have Zoom for those who cannot come in person. Also in May, I plan to show a video on the Age of Steam Museum in Sugar Creek, Ohio. This will be a short mini clinic for your entertainment. Aerial photo is bottom right. The museum has the world's largest private collection of steam locomotives ([ageofsteamroundhouse.org](http://ageofsteamroundhouse.org)). I have not been there but it is on my bucket list.

On June 14th (Note: this is the second Sunday) Bruce DeMaeyer will present a clinic on "How to Plan Your Layout." Bruce planned and worked on his layout and he will discuss what you need to do to plan your layout. Even if you have a layout, you can receive some ideas for future changes. There will be no meeting in July and for August, I am working on a layout tour.

When September comes around, we will meet in the library again and John Lathrop will tell us about the New River Gorge.

Remember that at the May meeting we will also have the Monthly Modelers Showcase lead by Cecil Hestand and the subject for May will be passenger equipment. Either bring

your model to the library or send pictures to Cecil ([cecahes@gmail.com](mailto:cecahes@gmail.com)) before April 29th. You can send them to Bob Belt ([beltbob1@gmail.com](mailto:beltbob1@gmail.com)) by May 1st. Please do it early. Every one should have something passenger related. It does not have to be a car, maybe a station, or you can use your imagination? My thanks to Bob Belt, Kevin Ellis, and Randy Coffman for handling the video equipment for the meetings.

We had a good response in April and I hope we can continue it. We also need some new presenters for Monthly Modelers Showcase. I know some of you have some interesting and new items that the other members would like to see. So let's join the others and present something yourself. We would like to see it! We have some very good modelers and we should be sharing what we have. Cecil has selected a wide variety of topics and you surely can find something for at least one of them, probably more.

Remember that the Bluegrass Model RR Club will have their summer show on July 11 & 12 at the Shriners Temple on Southland Drive. Vendors will be present and when visiting the T-TRAK layout, you will see some of our members. Looking around, you will see other familiar faces working the show. Outside on Sunday there will be a Farmers Market going on.

As always, take care and stay safe.

—Larry Smith





For the NMRA MC Region officers link to [www.midcentral-region-nmra.org/bod2.html](http://www.midcentral-region-nmra.org/bod2.html)

*The Lantern* is a monthly (except July) publication of Division 10, Mid Central Region (MCR), National Model Railroad Association (NMRA). All opinions expressed herein are those of the authors, and do not necessarily reflect those of Division 10, the MCR, the NMRA, or anyone else.

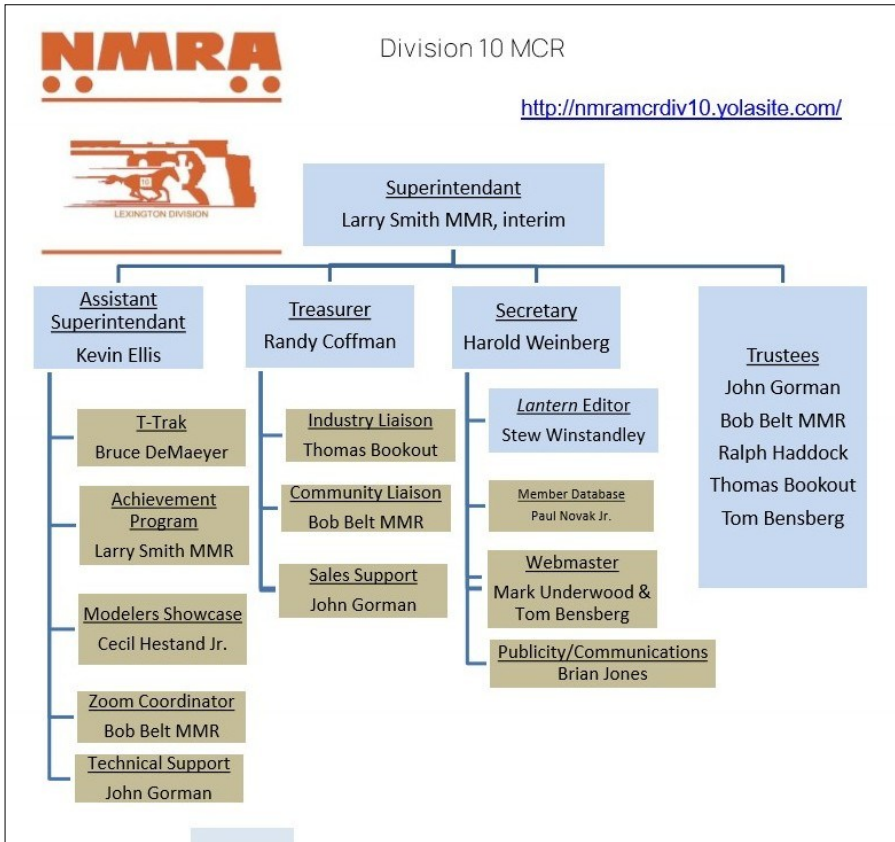
## In Recognition...

Many thanks to folks listed in the column below. They have given their support for our club. We encourage all NMRA members to help with financial support to *The Lantern* and our website and the Division 10's activities. **Send your monetary contribution to our Treasurer.**

To be listed here your contribution needs to be at least \$20 in cash, or material valued at \$50, or a total of 20 hours time within the last year. Division 10 receives NO monetary support from the NMRA or the MidCentral Region. Div.10 is recognized by the US government as a 501c3 corporation and your cash or material donations may be tax deductible.

Report materials or time to Stew Winstandley. To the right of each contributing member's name is the month of his or her latest contribution. Whenever one makes a contribution of money, material, or time, his or her date will be updated, and for new contributors, their name will be added. Anyone making a contribution will be listed below for 12 months.

Alan Bourne	2/2026
Rich Murphy	12/25
Lou Jaquith	11/25
Randy Coffman	11/25



### Division 10's advertising policy:

A. COMMERCIAL AD RATES 1. Newsletter • \$10/month for business card • \$15/month for 1/8 page or less • \$25/month for 1/4 page • \$45/month for 1/2 page • \$80/month for full page • Multiple separate ads can be aggregated together for the above price structure. Div10 Website: No commercial ads allowed.

B. MEMBER AD RATES 1. Newsletter: Member rates will be at 20% of the commercial rates Members that have a commercial business will pay the commercial

Website addresses are: 1) above at top of Organization Chart,

2) <https://www.facebook.com/NMRA.MCR.Div10/> and

3) <http://ttrak.wikidot.com/nmra-mcr-division-10-the-kentucky-division>

4) YouTube.com search: Division 10 Mid Central Region NMRA, Past Div.10 clinics are available on YouTube.

Contributions to Division 10 are sent to the treasurer, Randy Coffman. His address is 1500 River Circle Dr, Richmond, KY 40475-7907.

The May Showcase is Passenger Equipment. Page 3 has text and photos of head end power. When passenger trains are detached from their train's HEP a hook up to a stationary power system is used. A photo of one is below. A search for a model turned up nothing available for your modern day passenger train when in your layout's yard,



## Passenger Equipment (HEP)

Since our meeting's display will be passenger equipment, here's a discussion about one necessary piece of equipment, HEP (head-end power). HEP supplies electrical power to the passenger cars. Before HEP trains had steam generators. In the late 1940s and 1950s the Chicago & North Western pioneered HEP for their commuter fleet. The final transition to HEP was completed by Amtrak in 1982. If your layout's era is after 1980 and you have a passenger train, you either have HEP in your locomotive or in a separate HEP car. If your era is prior to that your passenger locomotive has a steam generator.

I have a Monon Alco C420 model that has a high short hood that contained the steam generator. The Monon's freight C420s had a low short hood. Today HEP may be a separate generator, or as in Siemen Chargers, power comes from a static inverter that converts power from its prime mover.

Pictured below is an O scale model of Reading & Northern #270. On the rear roof of the locomotive are the exhausts from the generator. A photo of BLI's HO RBMN #270 model did not show the necessary generator exhaust.



The two bottom photos are of electrical generator cars. Page four has a photo of a model of a Union Pacific generator car like the one that is in the UP's Big Boy consist. Bottom left is the FEC's generator car. Bottom right in front is a model I built of the FEC generator car when it was red, not dark blue as is today's car. I also created a generator car for my KY Steam Heritage consist, it is not prototypical. —Stew Winstandley



# THE LANTERN

NEWSLETTER FOR NMRA DIVISION 10 MCR

210 BRANNON RD.  
NICHOLASVILLE, KY 40356-9711  
nmramcrdiv10.yolasite.com

*MAY 3, 2PM*

**EASTSIDE LIBRARY, 3000  
BLAKE JAMES DR.,  
LEXINGTON 40509 WITH  
ONLINE ZOOM**

## MODELERS SHOWCASE

PASSENGER EQUIPMENT

### MEETING AGENDA

CSX WINCHESTER TO  
CORBIN, CHARLES BOGART

### SHORT PRESENTATION

AGE OF STEAM MUSEUM

## MONTHLY MODELERS SHOWCASE

EACH MEETING NOW HAS A MODELERS SHOWCASE. THE MAY MEETING WILL FEATURE "PASSENGER EQUIPMENT". THIS TOPIC COVERS UNLIMITED POSSIBILITIES. PROBABLY THE MAJORITY WILL BE PASSENGER CARS, BUT A LOT OF ADDITIONAL PASSENGER EQUIPMENT IS USED ON RAILROADS. SHOWN BELOW IS UNION PACIFIC'S HEP (HEAD-END POWER) CAR 2066. THIS IS A MODEL FROM BROADWAY LIMITED IMPORTS. DISCUSSION OF HEP IS ON PAGE 3.



## AROUND THE BEND

MON.	DAY	HOST	PLACE	EVENT / PROGRAM	TOURS	SHOWCASE
May	5	Div. 10	Eastside Library and Zoom online	Then and now, CSX Winchester to Corbin, Charles Bogart	None	Passenger Equipment
June	4-7	Div. 3	Marriott at UofD, Dayton, Ohio	Mid Central Region Convention website address bottom of page	Area Layouts	T-TRAK layout featuring Operating Sessions
June	14 (2nd Sunday)	Div. 10	Eastside Library	How to Plan Your Layout, Bruce DeMaeyer	None	
July	27-Aug.2	SER	Chattanooga, TN	2026 National Convention, www.nmra2026.org	Area Layouts	
July	4	No Div. 10 meeting in July	Union Pacific Big Boy #4014, Philadelphia	The America 250th Anniversary will include an east coast visit of the UP steam locomotive		

The link for Zoom access to the meeting will be emailed on Friday, May 1st.

[www.modelraildayton.com/Documents/2026%20Convention/2026MCRConHome.html](http://www.modelraildayton.com/Documents/2026%20Convention/2026MCRConHome.html)