



# THE LANTERN



MAY 2021 VOLUME 23 ISSUE 5

## From the Superintendent

I would like to thank **Bill Paulsell MMR** for volunteering to do a clinic for our division members. I have been asking what people would like to see and also asking members to step up and volunteer to do a clinic for our division. Bill, along with other division members, has responded and I appreciate it. As usual, Bill did an excellent job describing how he has scratchbuild this structure for his layout. Bill has built many structures for his layout replacing his kit structures with scratch built ones. This is one of his goals for his layout. Thanks to Bill for such an informative presentation.

The topic for Monthly Modeling on May 2nd is your scratch built structure. I know a lot of you have a least one structure, so please take a photo of your structure and email it to **Bob Belt** so all of us can see it. There should be a lot of submissions this time since we all have buildings and we have some talented builders. I have been pleased to see so many members participating in Monthly Modeling. It does not take much time to join in. In submitting your photo to Bob it would help to label it with your name or initials so we know who it belongs to. If you have more than one photo, please label them with a number along with your name so we can tell which photo is to be

shown first, then second, and so on.

Hopefully we should see a lot of participants since I believe many of our members have a scratch built structure. I would also like to mention that a structure is generally recognized as a building, but for modeling and AP purposes, about anything which is man made can be considered a structure. That would include a number of things you would see in a yard along with the depot.

At our May 2nd meeting, **Rich Murphy** will show us what he has accomplished building his new layout in Kentucky. Rich moved here from Michigan where he was an active modeler, had a layout, and participated in operations. Rich will show us pictures of the layout, and discuss what decisions were made in building his layout. There are always choices to be made in building a layout and Rich may discuss his choices.

Although the overall situation with COvid-19 is improving with more persons becoming vaccinated, we should still continue to watch ourselves and others to be safe. I hope you all have received your vaccine or will soon. Hopefully we will be able to meet in person in the near future, either in operations or in a meeting. Stay safe. — Larry Smith (larry.ksmith@yahoo.com)

## In Recognition...

Many thanks to folks listed in the column below. They have given their support for our club. We encourage all NMRA members to help with financial support to *The Lantern* and our website and the Division 10's activities. **Send your monetary contribution to our Treasurer.**

To be listed here your contribution needs to be at least \$20 in cash, or material valued at \$50, or a total of 20 hours time within the last year. Division 10 receives NO monetary support from the NMRA or the MidCentral Region. Div.10 is recognized by the US government as a 501c3 corporation and your cash or material donations may be tax deductible.

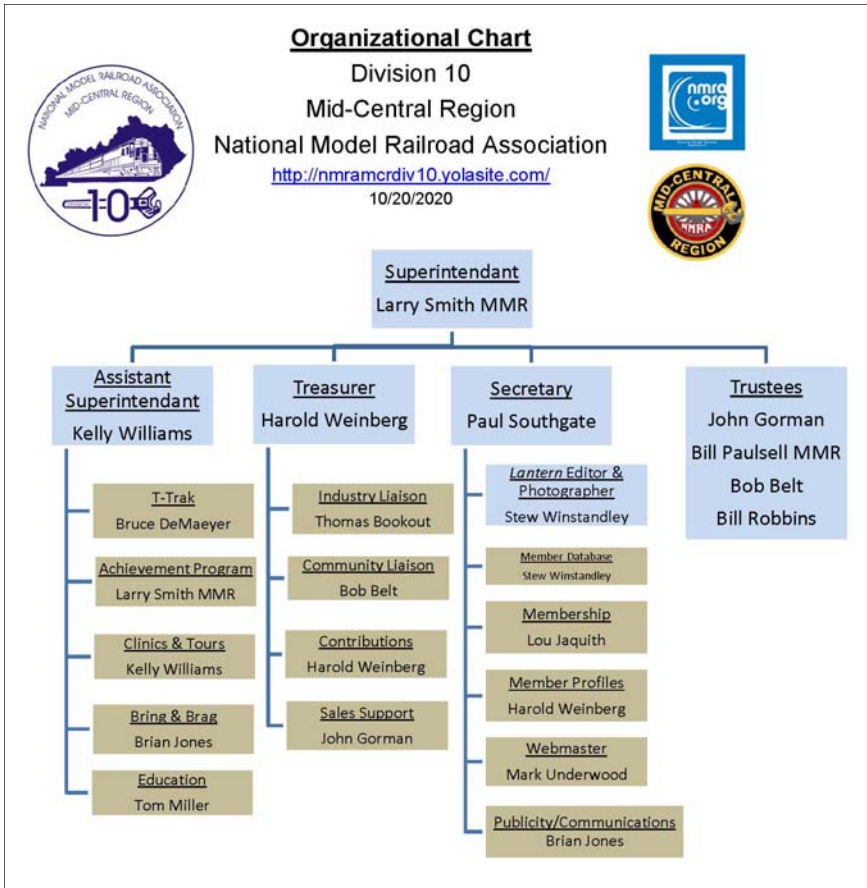
Report materials or time to Stew Winstandley. To the right of each contributing member's name is the month of his or her latest contribution. Whenever one makes a contribution of money, material, or time, his or her date will be updated, and for new contributors, their name will be added. Anyone making a contribution will be listed below for 12 months.

John Wilshire	4/2021
Lou Jaquith	1/2021
Rich Murphy	1/2021
Chester Myers	3/2021
Fred Plymale—Slide Projector	
John Gorman—Contributions to T-Trak	
Harold Weinberg—Treasurer's Materials	



For the NMRA MC Region officers link to [www.midcentral-region-nmra.org/bod2.html](http://www.midcentral-region-nmra.org/bod2.html)

*The Lantern* is a monthly (except July) publication of Division 10, Mid Central Region (MCR), National Model Railroad Association (NMRA). All opinions expressed herein are those of the authors, and do not necessarily reflect those of Division 10, the MCR, the NMRA, or anyone else.



### Division 10's advertising policy:

A. COMMERCIAL AD RATES 1. Newsletter • \$10/month for business card • \$15/month for 1/8 page or less • \$25/month for 1/4 page • \$45/month for 1/2 page • \$80/month for full page • Multiple separate ads can be aggregated together for the above price structure. 2. Web site: No commercial ads allowed.

B. MEMBER AD RATES 1. Newsletter: Member rates will be at 20% of the commercial rates. Members that have a commercial business will pay the commercial rate. 2. PAYMENT Payment is by cash or check to the treasurer in advance. No credit/debit cards..

**Website** addresses are: 1) above at top of Organization Chart,  
2) <https://www.facebook.com/NMRA.MCR.Div10/> and  
3) <http://ttrak.wikidot.com/nmra-mcr-division-10-the-kentucky-division>

**Division 10 Treasurer:** Give or send your contribution to Harold Weinberg, 8 Lansdown Estates, Lexington, KY 40502-3322.

**Renee and Ray Groseer MMR** are having an open house on August 1st. They have a layout and a ride-on railroad. The Grosser's home is at 1145 Linn Road, Eubank, KY, which is about 8.5 miles east of the intersection of US 27 and KY 70, south off of KY 70. This is a private event and is not sponsored by the NMRA.

## 0-6-0 and 0-6-0T (is there space in the HO scale tank for DCC?)

With Rich Murphy presenting a clinic during the May meeting, since he has two HO scale 0-6-0T locomotives, and is interested in a 0-6-0 with tender (prototype photo on page 4 and below), some internet searching for information about 0-6-0 locomotives revealed the following:

“When train lengths eventually grew beyond the ability of the 0-6-0 for heavy switching work, the 0-8-0 superseded it. Nevertheless, the 0-6-0 remained a popular engine for certain yard duties that did not require the heft of a 0-8-0. The 0-6-0 found a ready home switching passenger trains and working small yards, and industrial switching jobs particularly in the logging industry.

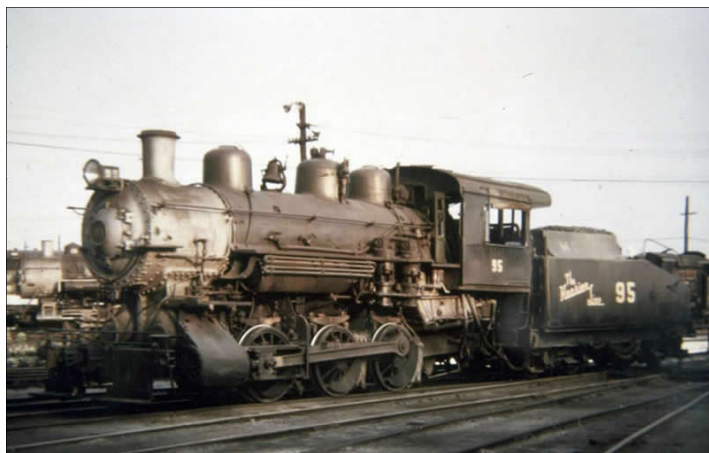
An important milestone in the locomotive's evolution was the introduction of the standardized United States Railroad Administration 0-6-0 in 1918. It was one of twelve standardized locomotive designs conceived and manufactured while U.S. railroads were under the control of the federal government. The USRA design embodied many of the best features of 0-6-0s built to date, and the great majority built afterward owed something to it. Almost all railroads had 0-6-0s on their roster at some point in time. By the time the last one was delivered in 1946, more than 15,000 had been built - the most of any steam switcher in North America.” [www.steamlocomotive.com/locobase.php?country=USA&wheel=0-6-0](http://www.steamlocomotive.com/locobase.php?country=USA&wheel=0-6-0)



The photos to the left are of Bachmann HO scale 0-6-0T locomotives. The one of Pennsy 2780 is from Rich Murphy. This type of prototype tank locomotives was built by H. K. Porter in Pittsburgh, Pennsylvania.

As a locomotive producer, the H. K. Porter Company became the third largest producer of Narrow Gauge road locomotives following only Baldwin and Brooks. Porter was second to none in regards to small steam power for industrial applications.

The photo below is of the last operational steam locomotive, a 0-6-0, on the **MONON** Railroad. It was retired in 1949.



# THE LANTERN

NEWSLETTER FOR NMRA MCR DIVISION 10

210 BRANNON RD.  
NICHOLASVILLE, KY 40356-9711  
nmramcrdiv10.yolasite.com



**MAY 2, 1:30**

ONLINE ZOOM MEETING

**MONTHLY MODELING**

SCRATCH BUILT STRUCTURE

**MEETING AGENDA**

BULDING MY NEW LAYOUT,  
RICH MURPHY

**TOUR**

NONE



Above is a photo taken by Stew Winstandley at the Conway Scenic in 2011 of their operational 0-6-0, built in 1921. Read about 0-6-0s on page 3.  
<https://www.conwayscenic.com/steam-engine-7470-2/>

## AROUND THE BEND

MON.	DAY	HOST	PLACE	EVENT / PROGRAM	TOURS	MONTHLY MODELING
May	2	Div. 10	Zoom online	Building My Layout, Rich Murphy	None	Scratch Built Structure
June	6	Div. 10	Zoom online	Beginning Operations, Bob Frankrone		Detailed Track Right of way, 100+ scale feet.
July		Div. 10	No meeting, no newsletter			
Aug.	1	Grosser's	1145 Linn Road, east of Eubank, KY 42567	Invitation for vaccinated families to visit the Grosser's layouts	Additional information on page 2	
Sept.	5	Div. 10	Zoom online	Wiring your layout for DC or DCC, John Gorman		Non-revenue equipment

<https://zoom.us/download> - The web browser client for Zoom meetings will download automatically when you start or join your first Zoom meeting. Whether you are doing a Zoom for the first time or have done it before, use the link (web address) that will be emailed to you the middle of the last week of April.